

**TO: OVERVIEW AND SCRUTINY COMMISSION (CRIME AND DISORDER COMMITTEE)
20 NOVEMBER 2014**

**THAMES VALLEY PROBATION SERVICE AND
THE COMMUNITY REHABILITATION COMPANY
Assistant Chief Executive**

1 PURPOSE OF REPORT

- 1.1 This report provides background information for the meeting of the Crime and Disorder Committee with the Thames Valley Probation Service and the Community Rehabilitation Company, also officers from the Council's Community Safety team.

2 RECOMMENDATION

That the Overview and Scrutiny Commission meet representatives of Thames Valley Probation Service and the Community Rehabilitation Company, with reference to:

- **the effect of the recent changes to the probation arrangements;**
- **the role and contribution of both organisations to community safety and prevention of re-offending locally; and**
- **future plans and priorities.**

3 SUPPORTING INFORMATION

- 3.1 The Police and Justice Act 2006 requires every local authority to have a 'Crime and Disorder Committee' with the power to review and scrutinise, and make reports or recommendations, regarding the functioning of the responsible authorities of the local Crime and Disorder Reduction Partnership/Community Safety Partnership. Under the Council's Constitution, the O&S Commission is designated as the Council's Crime and Disorder Committee.

- 3.2 The National Probation Service (NPS) is a major partner organisation in the Community Safety Partnership and the Bracknell Forest Partnership, and has not previously attended a meeting of the Overview and Scrutiny Commission/Crime and Disorder Committee. Working alongside the NPS are the Community Rehabilitation Company and the Council's Community Safety Team.

- 3.3 The people present at the meeting are anticipated to be:

- Nicola Webb, Assistant Chief Officer – National Probation Service (NPS), Berkshire Local Delivery Unit (LDU)
- Gabriel Amahwe, Head of Operations (South), Thames Valley Community Rehabilitation Company

Bracknell Forest Council

- Ian Boswell, Community Safety Manager
- Justin Whitlock, Enhanced Integrated Offender Management (IOM) Case Manager

Integrated Offender Management

- 3.4 Integrated Offender Management (IOM) is the umbrella that brings together agencies across the Thames Valley to prioritise interventions with offenders who commit the most crime and cause the most harm to the community. It builds on and expands focused initiatives such as the Prolific Priority Offender scheme (PPO), drug interventions and Multi Agency Public Protection Arrangements (MAPPA). IOM is jointly led by Thames Valley Police, the Probation Service and, unique to Bracknell Forest, significant investment and involvement by the Community Safety Team. It is supported by many other agencies such as the prison service, the health service, Job centre and the Drugs and Alcohol Action Team, to name just a few.
- 3.5 This ensures timely and efficient interventions through shared intelligence and identification of offenders who require immediate and ongoing action, either by support or through targeted 'catch and convict' or support to rehabilitate and resettle. Intervention and support can take many forms, but it is generally designed tailored to the individual around a process referred to as the Seven Pathways. These are:
1. Accommodation
 2. Education, training and employment
 3. Health
 4. Drug and alcohol abuse
 5. Finance, benefit and debt
 6. Relationship, family and children
 7. Attitudes, thinking and behaviour.

Interventions vary between offenders. Each individual is assessed and an intensive management programme is put in place with the objective of reducing their offending, and assisting them to change their lifestyle away from criminality.

- 3.6 In the Thames Valley, the IOM process is intensively managing approximately 470 individuals at any one time. Within Bracknell Forest there is a cohort of 16 individuals on the IOM scheme. Those being managed are identified through a multi-agency local meeting, which considers individuals' offending history and likelihood of continued risk of offending and causing harm to communities. Some are selected as a result of recent convictions, offending patterns (priority is given to serious acquisitive crime offences), or release from prison. Where offenders are identified but not able to be managed within IOM the local neighbourhood policing team is made aware of those at risk of offending and are tasked to make contact and supervise at varying levels of engagement.
- 3.7 In addition to the cohort of offenders managed on the IOM, the Community Safety Team also works closely with the Police, Probation and other local service providers (Look Ahead, Connexions, etc) to deliver specific interventions with individuals of local interest who are not able to access support services. In addition to the work with the IOM cohort the offender manager within the Council's Community Safety Team also works with perpetrators of domestic abuse and those identified as being at risk of radicalisation and delivers reflective practice supervision to other practitioners delivering interventions in these fields.

The Probation Service

- 3.8 From 1 June 2014 the National Probation Service (NPS) and the Community Rehabilitation Companies (CRC) replaced the former 35 probation trusts. The National Probation Service in England and Wales is divided into seven divisions.

Bracknell Forest makes up part of the South West/ South Central Division. The primary focus of that NPS Division is to manage offenders who pose a high risk of serious harm, all Multi Agency Public Protection Arrangements (MAPPA) offenders and to service the courts in relation to the provision of reports. The NPS also manage the parole process for applicable cases. Attached to the report is an NPS organogram, under development. This outlines the management structure for Nicola Webb and her two ACO colleagues and includes to middle manager level only, each manager listed would have up to 14 direct reports. In summary, Nicola Webb heads up the NPS for Berkshire and has a Thames Valley wide role for courts.

- 3.9 The stated priority of the NPS nationally is to protect the public by the effective rehabilitation of high risk offenders, by tackling the causes of offending and enabling offenders to turn their lives around. Their responsibilities include:
- a) preparing pre-sentence reports for courts, to help them select the most appropriate sentence
 - b) managing approved premises for offenders with a residence requirement on their sentence
 - c) assessing offenders in prison to prepare them for release on licence to the community, when they will come under our supervision
 - d) helping all offenders serving sentences in the community to meet the requirements ordered by the courts
 - e) communicating with and prioritising the wellbeing of victims of serious sexual and violent offences, when the offender has received a prison sentence of 12 months or more, or is detained as a mental health patient

3.10 The Thames Valley CRC has provided the following information:

New Probation service and management structure (Thames Valley)

1. **Context**

From 1 June 2014, the rehabilitation of offenders across England and Wales will be managed and delivered by 21 regional Community Rehabilitation Companies (CRCs) and the new National Probation Service (NPS).

2. **Roles of the two new agencies**

Thames Valley Community Rehabilitation Company (TVRC)

Management and supervision of:

- Low to Medium Risk of serious Harm offenders in the community or custody
- Prisoners serving less than 12; ■ High likelihood of reoffending cases months (includes additional licence supervision for 12 months)

Delivery of:

- Integrated Offender Management.
- Domestic Abuse Programmes.
- General Offending Programmes.
- Activities designed to reduce re-offending (as part of the new Rehabilitation Requirement).

National Probation Service (NPS)

Management and supervision of:

- High Risk of Serious Harm offenders in the community or custody. ■ All MAPPA offenders
- Victim Liaison Service. ■ Approved Premises

Delivery of:

- Court services, including all pre-sentence reports, breaches/enforcement (both for NPS and TVRS cases). ■ Recalls (as above). ■ Sex offender treatment. ■ Risk assessments and allocation of all cases to either NPS or TVCRC

3. **Probation services management structure (Thames Valley)**

In England, there will be six NPS divisions, each headed by a Deputy Director: London, South East, South West, Midlands, North West, and North East. The Deputy Director for the South West division within which Thames Valley sits is Angela Cossins.

TVCRC is one of the 21 Community Rehabilitation Company across the country. The Chief Executive Officer of TVCRC is Paul Gillbard.

Probation service delivery in Thames Valley is now divided into two clusters – Thames Valley South - Berkshire Cluster, and Thames Valley North – Buckinghamshire, Oxfordshire & Milton Keynes cluster.

Gabriel Amahwe is the Head of Operations (senior manager) for the TV CRC South and he reports directly to Paul Gillbard. Nicola Webb is the Assistant Chief Officer (senior manager) for TV NPS South and she reports directly to Angela Cossins.

For now, CRC and NPS staff are working from the same place, on the same systems and with many of the same offenders.

4 **ALTERNATIVE OPTIONS CONSIDERED/ ADVICE RECEIVED FROM STATUTORY AND OTHER OFFICERS/ EQUALITIES IMPACT ASSESSMENT/ STRATEGIC RISK MANAGEMENT ISSUES / OTHER OFFICERS/ CONSULTATION**

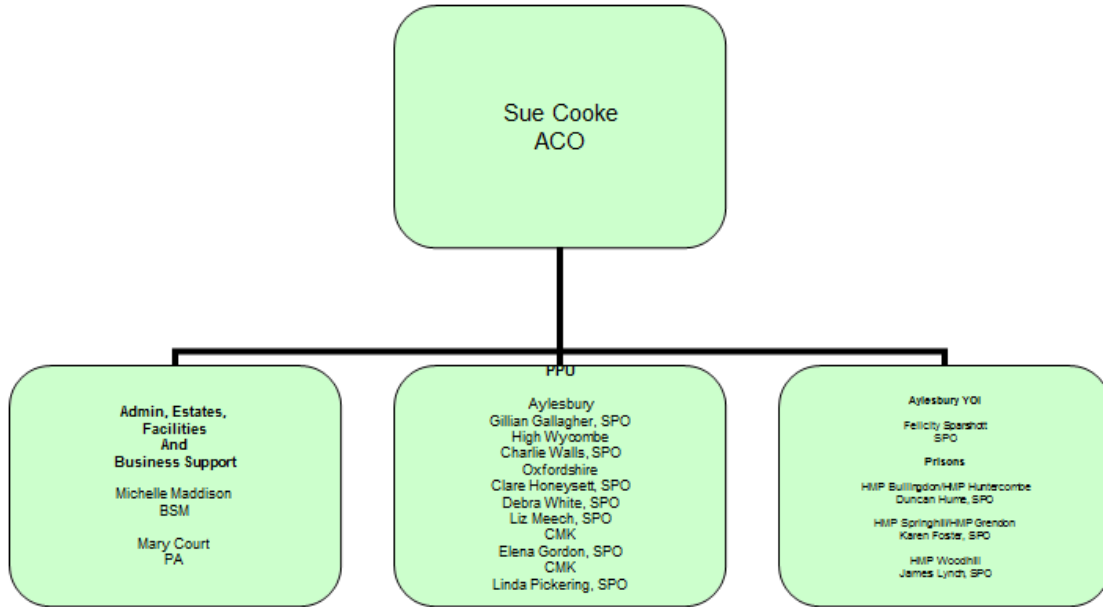
4.1 Not applicable.

Contact for further information

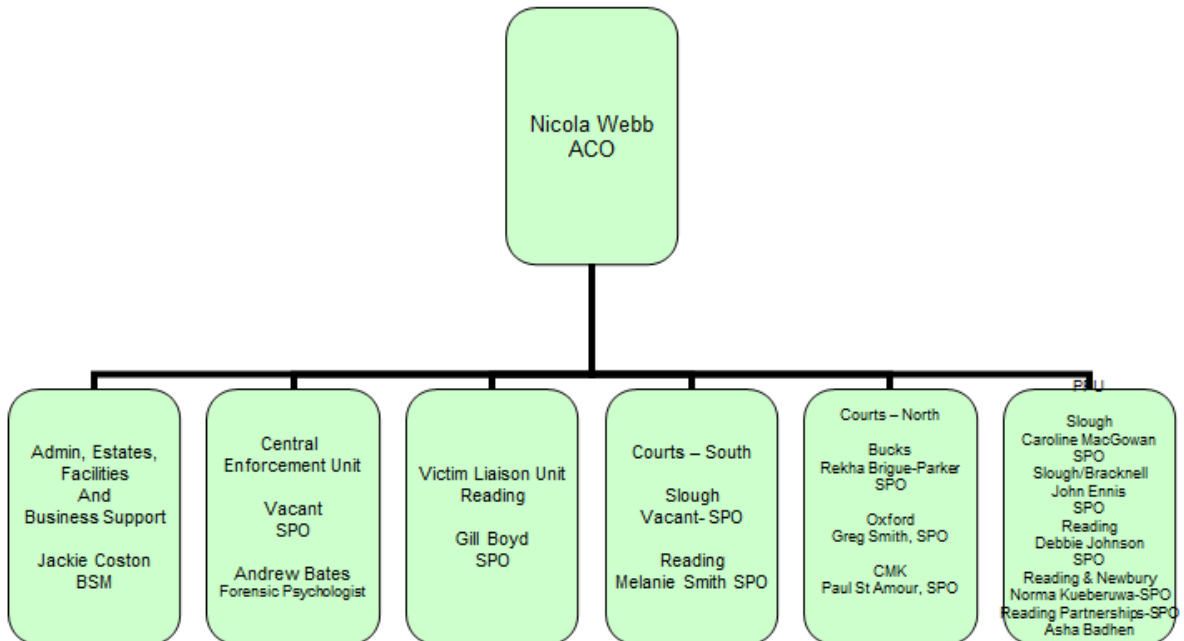
Richard Beaumont – 01344 352283
e-mail: richard.beaumont@bracknell-forest.gov.uk

National Probation Service

NPS TV North



NPS TV South



NPS PP & Approved Premises

