

*Working
together for
health and
wellbeing*

**Public
Health
for Berkshire**

Berkshire Weekly COVID-19 Briefing

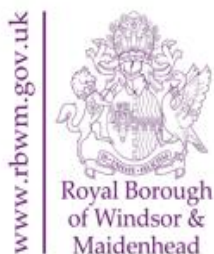
Bracknell Forest LOEB 29.12.20

The information included in this briefing is correct at
23rd December 10am

Berkshire Weekly COVID-19 Briefing

This briefing has been produced to share the latest local COVID-19 information with a wider audience and includes:

- Current information and surveillance
- Key messages from the Directors of Public Health in Berkshire and the six local authorities



Situational Awareness

The latest Public Health England (PHE) Situational Awareness Report shows that case rates increased in all Berkshire local authorities over the last week. Slough and Bracknell Forest cases exceeded 500 per 100,000 population and Reading, RBWM and Wokingham's cases have exceeded 400 per 100,000 population.

Situational Awareness indicators from 16th to 23rd December* in comparison to previous 7-day period

Area	Individuals tested per 100.000 population (7-day moving average)		Percentage individuals test positive (weekly)		Cases per 100.000 population - all ages (weekly)		Cases per 100.000 population - 60+ (weekly)		Number of confirmed cases (last 7 days)
	Value	Change	Value	Change	Value	Change	Value	Change	
Bracknell Forest	583.6	↑	14.5	↑	559	↑	308.9	↑	685
Reading	596.9	↑	11.2	↑	440.1	↑	254.2	↑	712
Slough	535.6	↑	16.6	↑	585.1	↑	456.1	↑	875
West Berkshire	526.3	↑	10.5	↑	356.6	↑	139.2	↓	565
Windsor and Maidenhead	641.4	↑	11.2	↑	484.7	↑	309.8	↑	734
Wokingham	512.6	↑	11.9	↑	409.1	↑	233.1	↑	700
South East	647.5	↑	11.2	↑	476	↑	293.5	↑	42,411
England	579.6	↑	10.6	↑	401.9	→	244.8	→	226,191

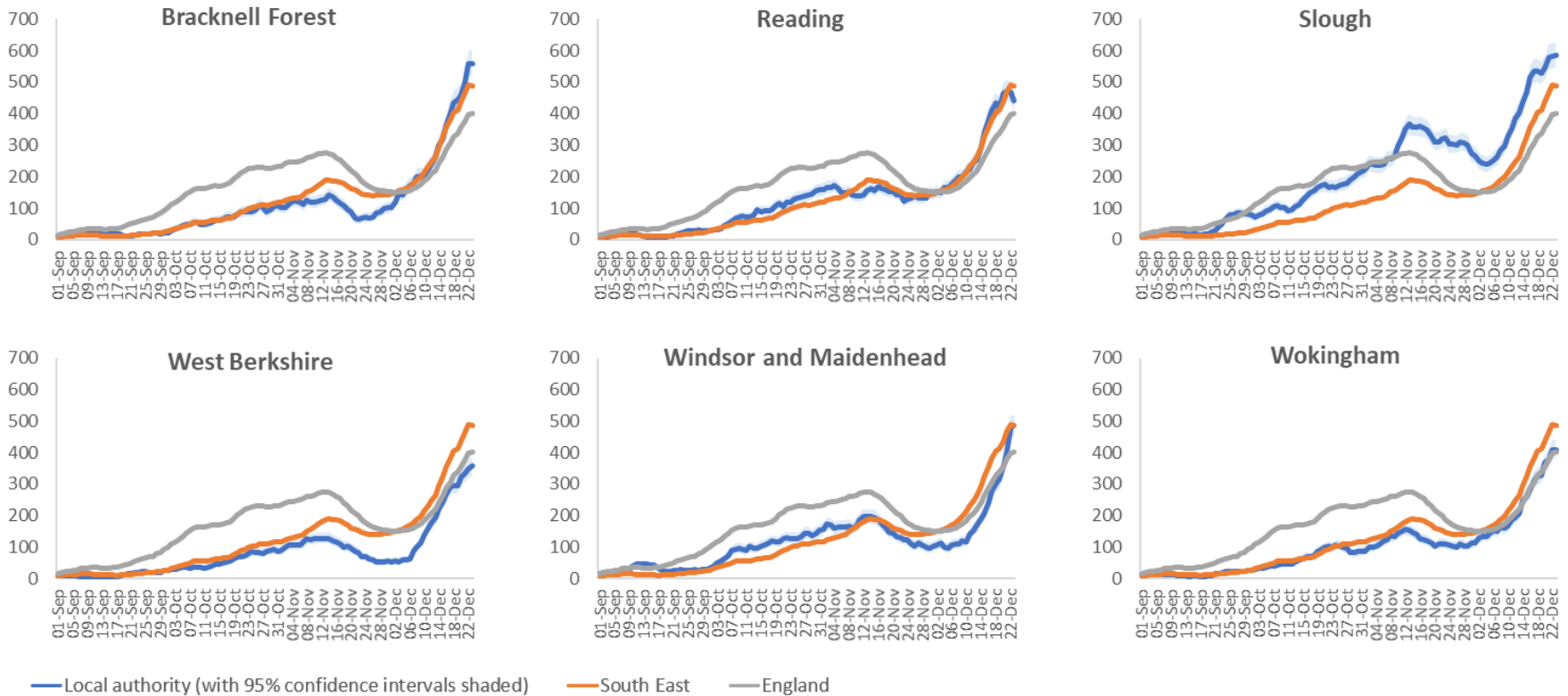
Source: PHE Regional South East Situational Awareness Report (22nd December 2020)

* Dates and figures refer to specimen date

Epidemiology of cases

Weekly rate of confirmed COVID-19 cases per 100,000 population (7-day rolling average)

Data from the most recent 4 days have been excluded from the charts as these will be incomplete

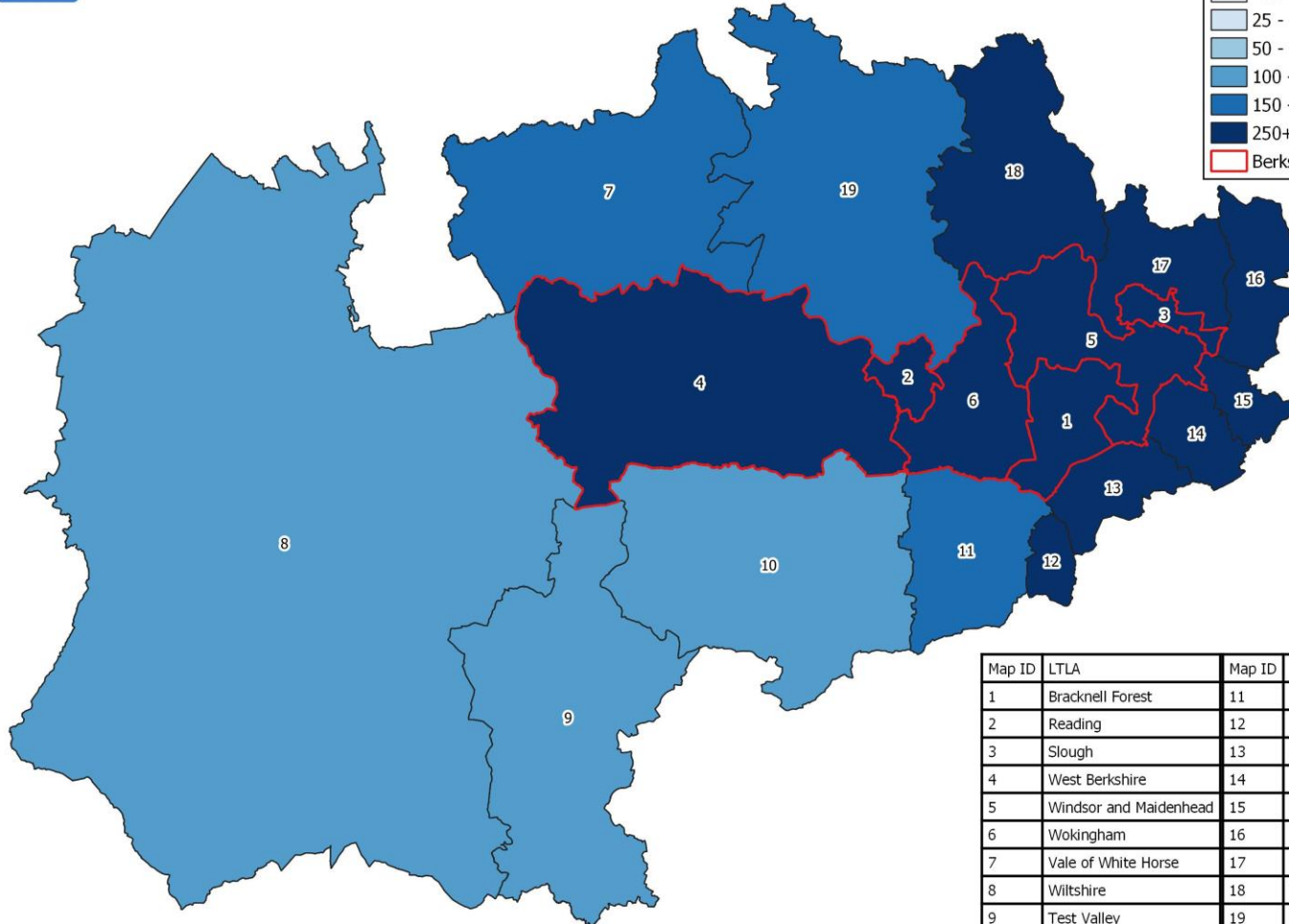
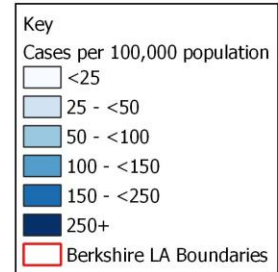


Source: PHE Second Generation Surveillance System (SGSS)

Situational Awareness



Weekly Rate of Confirmed COVID-19 Cases per 100,000 by Lower Tier Local Authority.
Data covers 7-day period from 11th to 17th December (published 22nd Dec 2020)



Map ID	LTLA	Map ID	LTLA
1	Bracknell Forest	11	Hart
2	Reading	12	Rushmoor
3	Slough	13	Surrey Heath
4	West Berkshire	14	Runnymede
5	Windsor and Maidenhead	15	Spelthorne
6	Wokingham	16	Hillingdon
7	Vale of White Horse	17	South Buckinghamshire
8	Wiltshire	18	Wycombe
9	Test Valley	19	South Oxfordshire
10	Basingstoke & Deane		

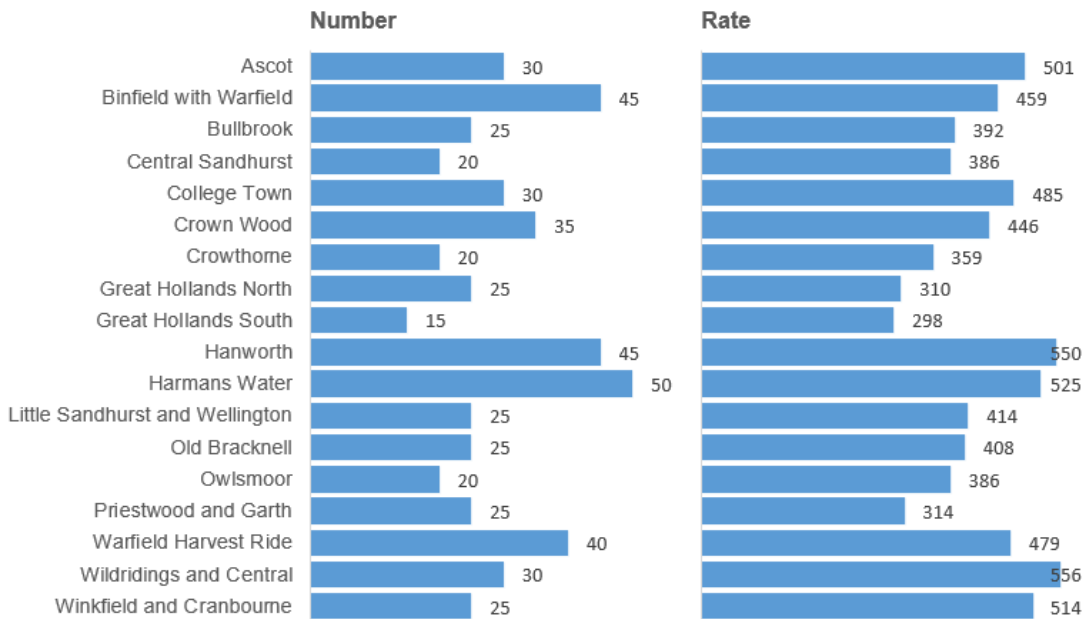
© This map has been produced using the and Ordnance Survey OpenData 2020 and PHE Regional SAR for 22nd December 2020

Bracknell Forest

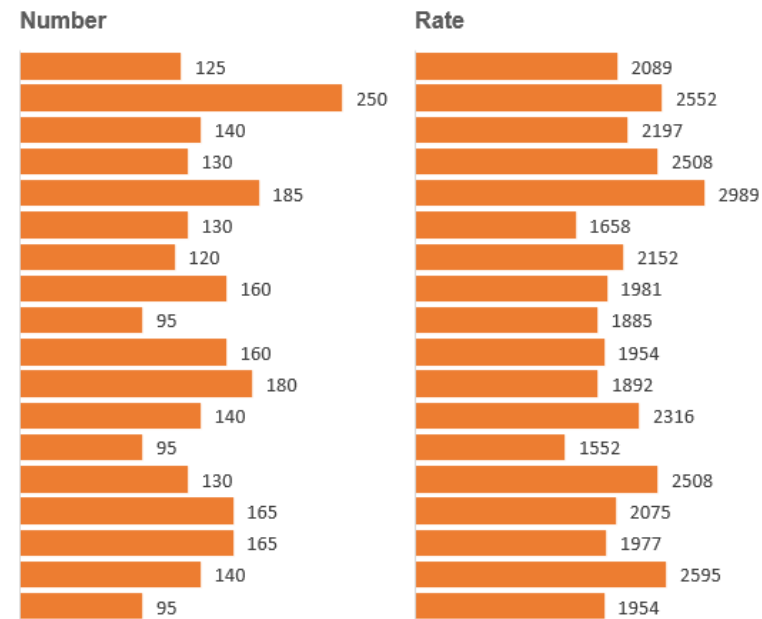
Data on confirmed COVID-19 cases are shown by Electoral Ward.

Caution should be taken with this information, as it will be based on small numbers and can fluctuate. Data relating to each Electoral Ward has been rounded to the nearest 5. This is in order to protect the identity of individuals.

Cases and weekly rates per 100,000 population for the latest week (12th to 18th December)



Total cases and total rates per 100,000 population (since Mar-20)

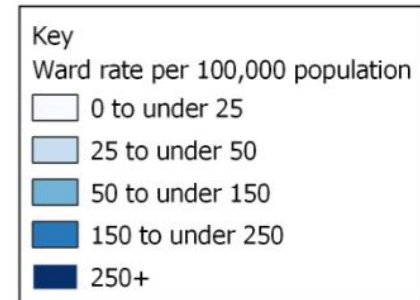
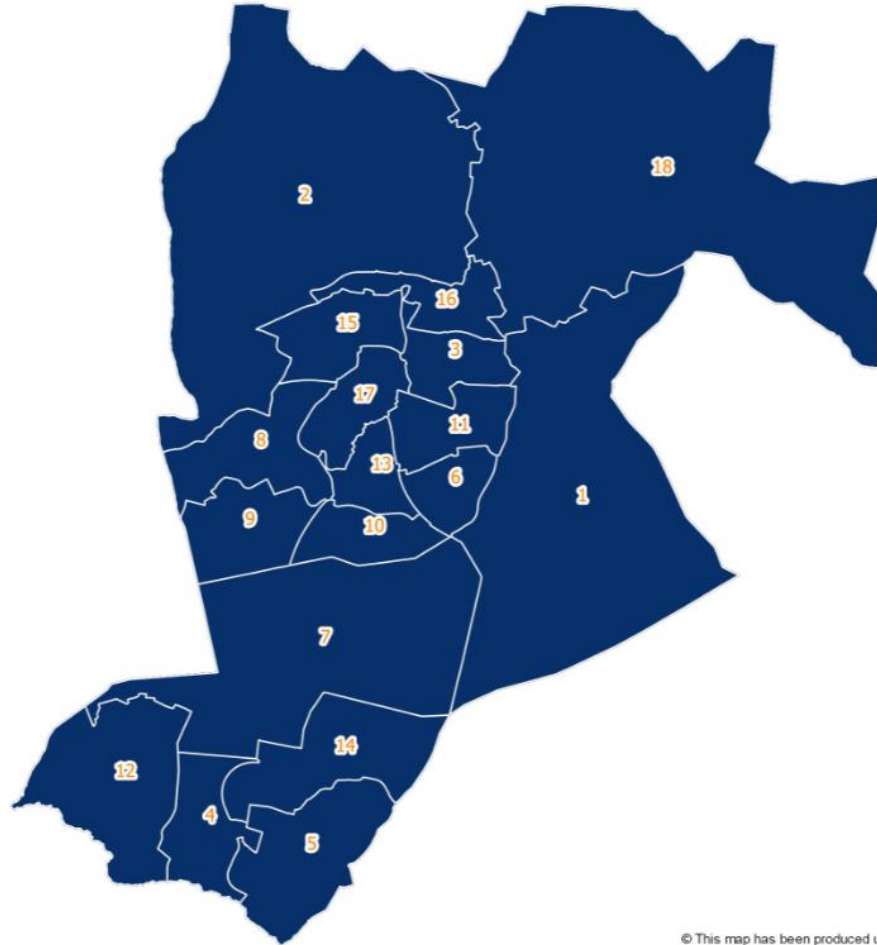


Source: PHE Second Generation Surveillance System (SGSS)

Bracknell Forest

Weekly rate of confirmed COVID-19 cases by Ward in Bracknell Forest
for the period 12th to 18th December 2020

Map ID	Ward Name
1	Ascot Ward
2	Binfield with Warfield Ward
3	Bullbrook Ward
4	Central Sandhurst Ward
5	College Town Ward
6	Crown Wood Ward
7	Crowthorne Ward
8	Great Hollands North Ward
9	Great Hollands South Ward
10	Hanworth Ward
11	Harmans Water Ward
12	Little Sandhurst and Wellington Ward
13	Old Bracknell Ward
14	Owlsmoor Ward
15	Priestwood and Garth Ward
16	Warfield Harvest Ride Ward
17	Wildridings and Central Ward
18	Winkfield and Cranbourne Ward



© This map has been produced using the PHE Second Generation Surveillance System (SGSS) and Ordnance Survey OpenData 2020

To see case, rate and trend information at an MSOA-level, go to <https://coronavirus.data.gov.uk/details/interactive-map>

Epidemiology of cases

- Cases increasing everywhere
- Across all ages and gender
- Proportionately across all ethnicities
- Over half of our cases are within household clusters
- Still a significant number of cases not linked to household clusters and we are therefore exploring these to understand where transmission is occurring
- Contact tracing
 - 90% exposed in own household
 - But a significant number of contacts are still being exposed through household visitors or visiting friends of family

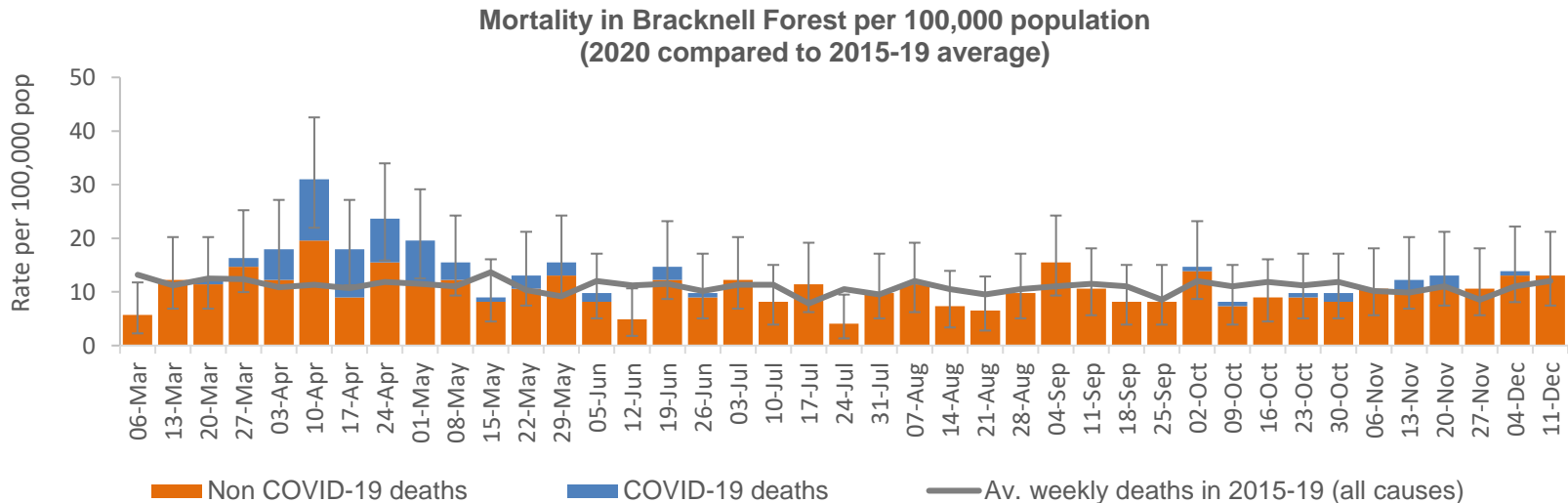
Hospital activity

- The increase in cases is now being mirrored in terms of bed occupancy
- SE, London and EoE are experiencing significant pressure within the NHS, though other regions not far behind
- Frimley system escalation was implemented on 23rd December

Deaths

There have been 84 COVID-19 related deaths during the pandemic. No deaths were recorded for the last week (5th – 11th Dec).

Since March 2020, Bracknell Forest's all-cause mortality rate has been 10% higher than the previous 5 year average, which equates to 69 additional deaths.



Source: [Office for National Statistics; Death registrations and occurrences by local authority](#)

Current local restrictions



From 20 December 2020, all areas within Berkshire went into Tier 4 restrictions.

People living in Tier 4 cannot join a Christmas bubble and must not leave or be outside of their home, except for specific purposes.

The Berkshire Public Health website has been updated to provide the latest tier level guidance and Christmas guidance for the local area:

<https://www.berkshirepublichealth.co.uk/information-centre>

Local information and communications

Don't bring COVID home

30 second videos from a range of local healthcare professionals are being disseminated across Berkshire this week. These aim to drive home the “Don't bring COVID home – spread the facts not the virus” message.

A simple social media animation has been also been created to reinforce this message.

Self-isolation rules

Self-isolation rules have now changed to cover 10 days from the point of a positive test, rather than 14 days. The Berkshire Public Health website has updated with this new guidance. Full information can be found at:

<https://www.gov.uk/government/publications/covid-19-stay-at-home-guidance/stay-at-home-guidance-for-households-with-possible-coronavirus-covid-19-infection>

Local information and communications

Testing

BFC Testing cell has convened to oversee the support with/implementation of:

- National testing programmes such as care home testing, school testing etc. in line with Government guidance and policy which in some areas is still evolving
- Community mass testing
- Director of Public Health's discretionary testing to undertake pilot approaches and in response to community outbreaks

An update on progress will be brought back to the next LOEB

For more information

For the latest Berkshire COVID-19 data (cases, NHS 111 triages and deaths) please visit our new website: <https://www.berkshirepublichealth.co.uk/>

Working together for health and wellbeing
Public Health for Berkshire

COVID-19 Dashboard Information Centre

This site is currently in beta. Pages will be continually tested and refined.

The latest Berkshire COVID-19 data at your fingertips.

Our dashboard provides you with the latest data and information in your local area.

Explore the dashboard

Additional information on national, regional and neighbourhood-level data can also be found at the main government website: <https://coronavirus.data.gov.uk/>