

# Bracknell Forest Community Safety Partnership (CSP)



## Annual Presentation – 13 October 2020

Timothy Wheadon  
Chair of the CSP and  
Chief Executive of BFC

Supt. Felicity Parker  
Vice-Chair of the CSP and  
Bracknell and Wokingham,  
Local Police Area Commander,  
Thames Valley Police

Alison O'Meara  
Head of Community Safety, BFC

# Content

1. Function and Role of the CSP
2. Crime Overview:  
  
1 April 2019 – 31 August 2020
3. Partnership-Working during COVID
4. CSP Sub-Group Successes
5. Questions

**1.**

# **Function and Role of the CSP**

# Legislative Framework of CSPs

- Statutory partnerships laid down in terms of the Crime and Disorder Act 1998
- CSPs are required to:
  - conduct an annual assessment of crime, anti-social behaviour and substance misuse
  - publish a 3-year plan (updated annually) of how it intends to make the community safer

# CSP Meetings and Representation

- CSP Steering Group meets 4 times a year
- CSP Forum/Workshop meets 2-3 times a year
- Chaired by the Chief Executive of BFC
- Vice-Chaired by the Local Police Area Commander
- Delivery groups are in place/set up which are dependent on the CSP priorities

## Statutory Members:

- Local authority
- Police
- Fire
- Clinical Commissioning Group (CCG)
- National Probation Service/Community Rehabilitation Company



# How does the CSP link into the Council Plan and the PCC's Plan?



# Resources 2020/21



## Funding:

- Community Safety Fund (Police and Crime Commissioner): £136,091
- Domestic Abuse (Bracknell Forest Council): £55,360
- Community Safety Team (Bracknell Forest Council): £172,760

## Community Safety Team Functions:

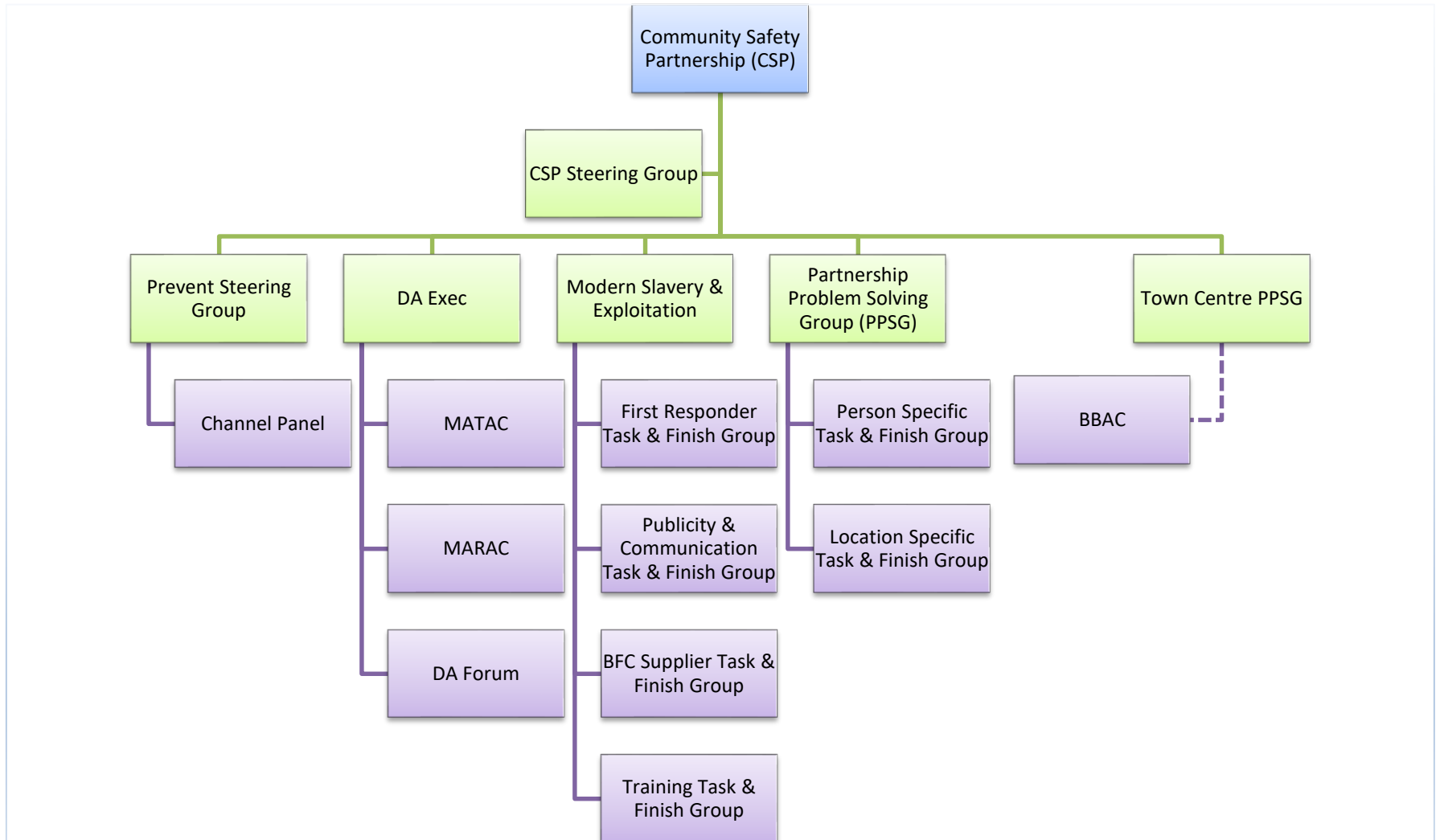
- Business Management of CSP
- Strategic Lead: Community Safety on behalf of BFC
- Strategic Lead: Domestic Abuse
- Strategic and Operational Lead: Prevent and Hate Crime
- Operational Lead: Anti-Social Behaviour
- Strategic Lead: Modern Slavery and Exploitation

# CSP Priorities 2020-2021

- |          |   |
|----------|---|
| <b>1</b> | <b>Tackle the exploitation of children, young people and vulnerable adults</b>                                    |
| <b>2</b> | <b>Reduce incidents of serious violence, sexual offences, and knife crime</b>                                     |
| <b>3</b> | <b>Work with communities to deal with crime and anti-social behaviour hotspots (including drug-related crime)</b> |
| <b>4</b> | <b>Reduce harm caused by domestic abuse</b>   |
| <b>5</b> | <b>Reduce incidents of residential burglary and theft from vehicles</b>   |



# CSP Sub-Group Structure



**MATAC: Multi-agency Tasking and Co-ordination**

**MARAC: Multi-agency Risk Assessment Conference**

**BBAC: Bracknell Business against Crime**

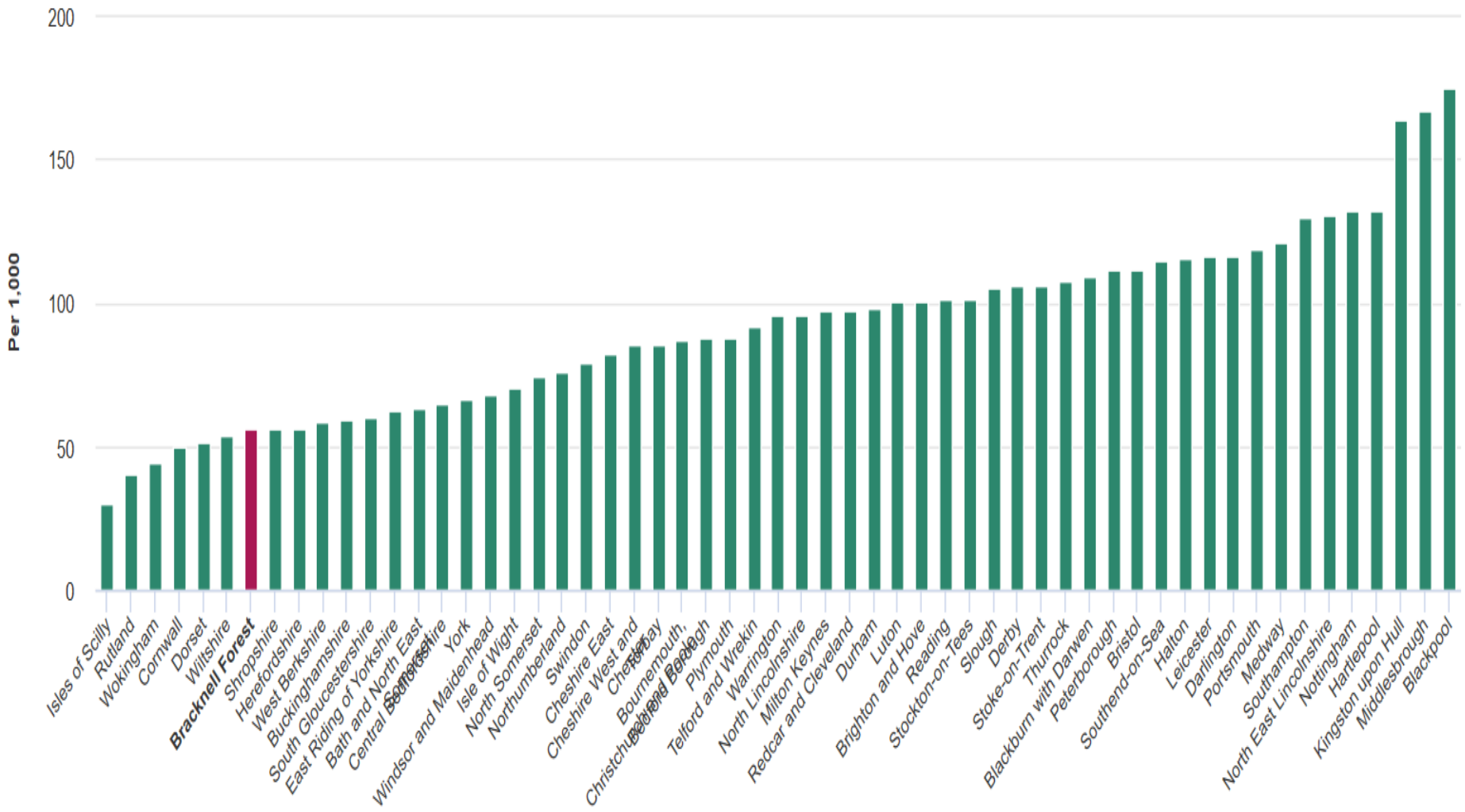
**DA: Domestic Abuse**

**2.**

**Crime Overview:  
1 April 2019 – 31 August 2020**



# Total recorded offences (excluding fraud) (offences per 1,000 population) (2019 Q4 (12 months ending)) for All English unitary authorities



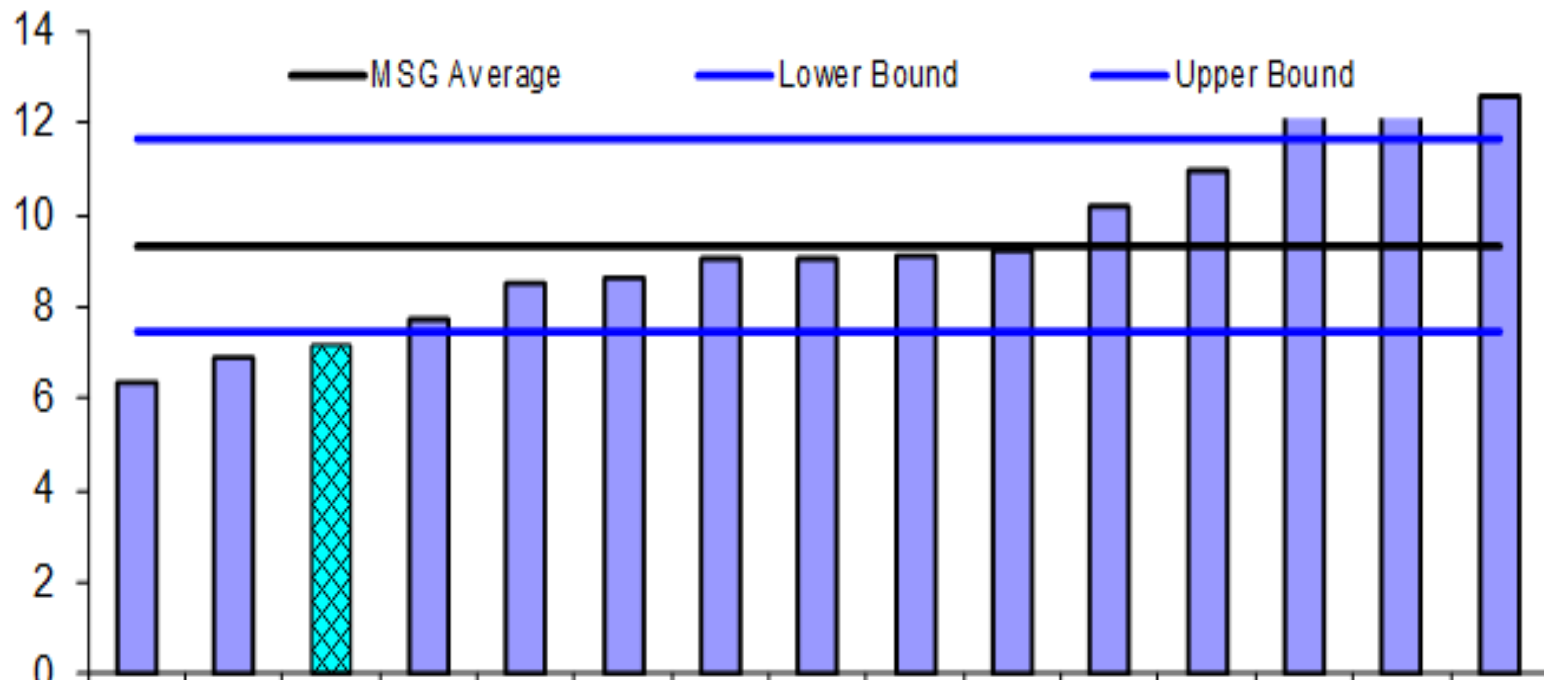
[cal.gov.uk/reports/lgastandard?mod-metric=1071](https://cal.gov.uk/reports/lgastandard?mod-metric=1071)

● Total recorded offences (excluding fraud) (per 1,000 population) 2019 Q4 (12 months ending) ● Bracknell Forest (Lead area)

# Performance against Key Priorities

<b>Residential Burglary - Dwellings</b>	<b>2018/19</b>	<b>2019/20</b>	<b>1 April- 31 August 2019</b>	<b>1 April- 31 August 2020 (COVID)</b>
<b>Bracknell Forest</b>	<b>204</b>	<b>218 (+7%)</b>	<b>57</b>	<b>48 (-16%)</b>
<b>Berkshire</b>	<b>2,211</b>	<b>2,068 (-6%)</b>	<b>702</b>	<b>601 (-14%)</b>
<b>Thames Valley</b>	<b>5,448</b>	<b>5,116 (-6%)</b>	<b>1,901</b>	<b>1,360 (-28%)</b>

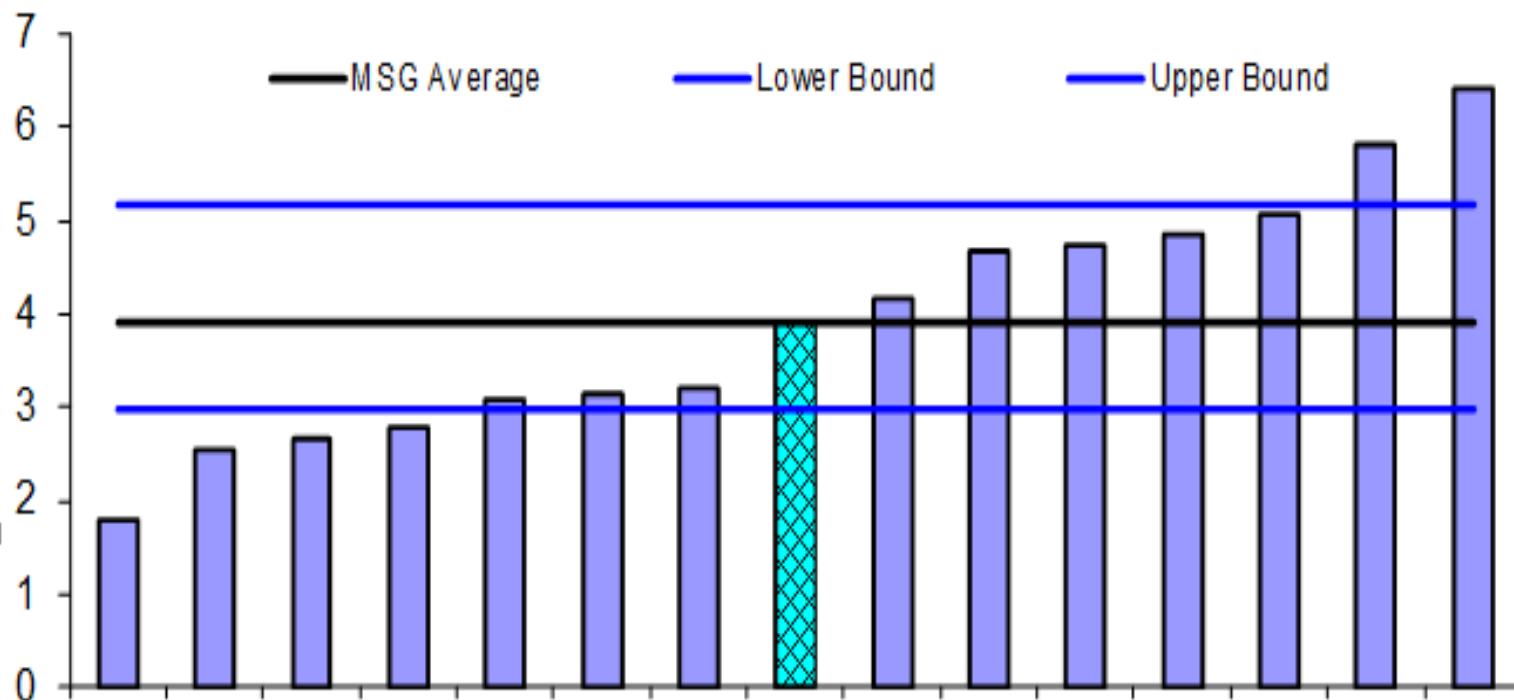
iQuanta Bar Chart MSG (12 months) - Crimes per 1000 Households  
Thames Valley - Bracknell Forest  
Burglary - residential  
01 Apr 2019 - 31 Mar 2020



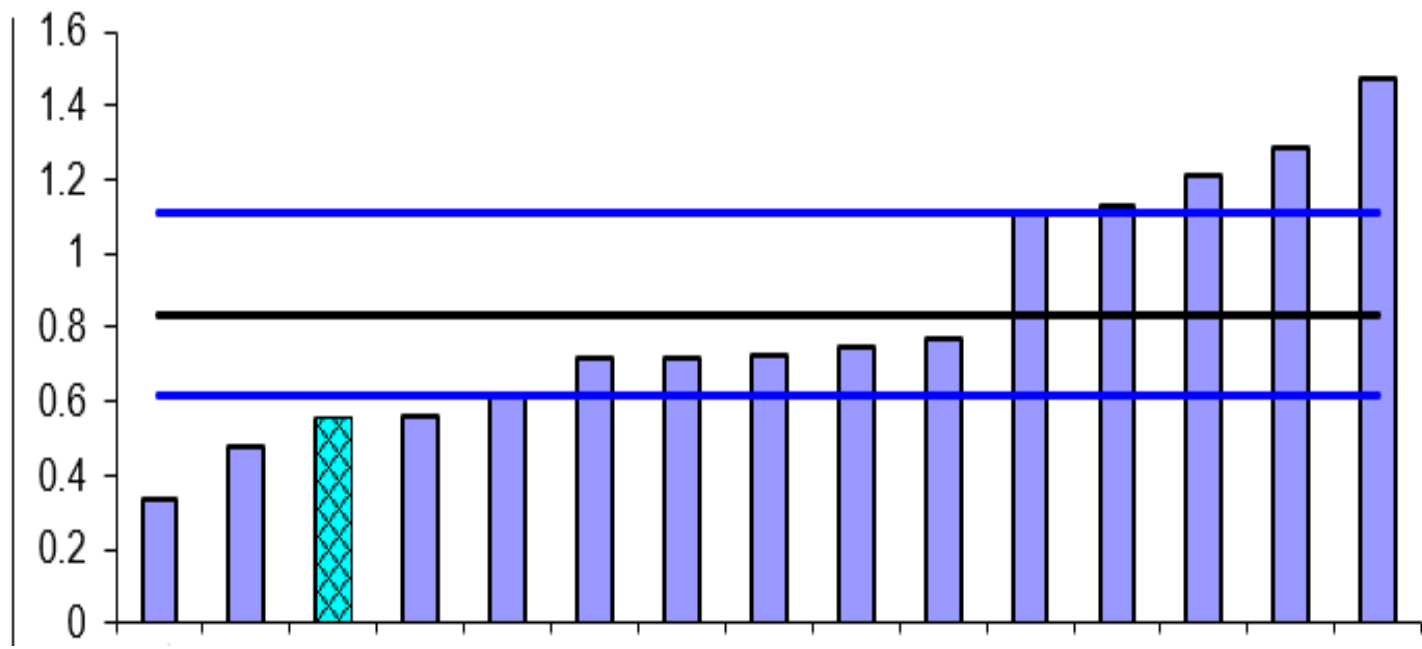
# Performance against Key Priorities

<b>Theft from Motor Vehicle</b>	<b>2018/19</b>	<b>2019/20</b>	<b>1 April- 31 August 2019</b>	<b>1 April- 31 August 2020 (COVID)</b>
<b>Bracknell Forest</b>	<b>453</b>	<b>477 (+5%)</b>	<b>179</b>	<b>93 (-48%)</b>
<b>Berkshire</b>	<b>5,043</b>	<b>5,228 (+4%)</b>	<b>2,301</b>	<b>1,337 (-42%)</b>
<b>Thames Valley</b>	<b>12,228</b>	<b>13,897 (+14%)</b>	<b>5,776</b>	<b>3,135 (-46%)</b>

iQuanta Bar Chart MSG (12 months) - Crimes per 1000 Residents  
Thames Valley - Bracknell Forest  
Theft from a vehicle  
01 Apr 2019 - 31 Mar 2020



**iQuanta Bar Chart MSG (4 months) - Crimes per 1000 Residents**  
**Thames Valley - Bracknell Forest**  
**Theft from a vehicle**  
**01 Apr 2020 - 31 Jul 2020**





# Bracknell Forest Theft from Vehicle:

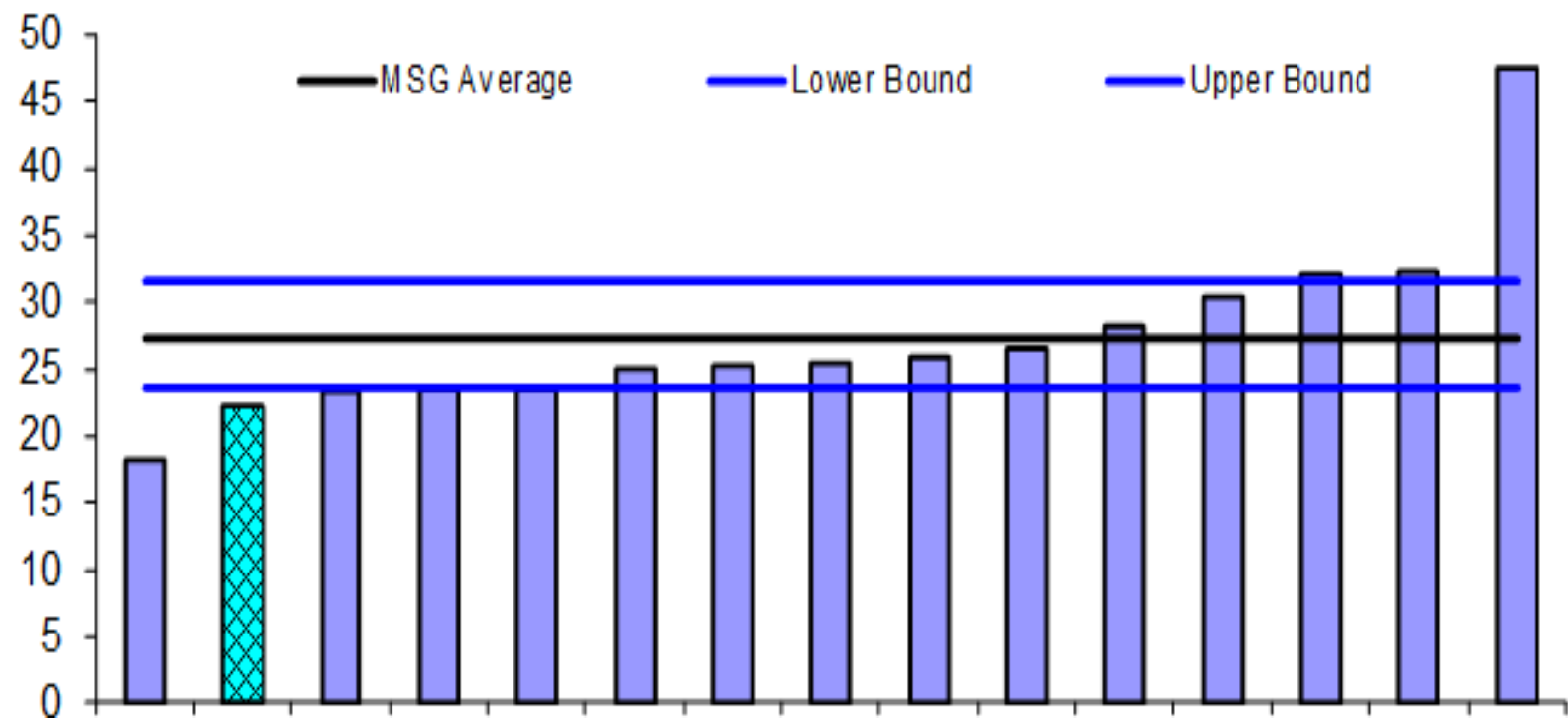
## Key points to note

- Most incidents are thefts of tools from vans at construction sites or hotels
- Proactive, continuous crime prevention work has taken place with tradesmen, hotels and site managers
- Some criminals are organised, forensically-aware and move from area to area
- Currently researching what else we can do by looking at good practice in other areas

# Performance against Key Priorities

<b>Violence against the Person</b>	<b>2018/19</b>	<b>2019/20</b>	<b>1 April- 31 August 2019</b>	<b>1 April- 31 August 2020 (COVID)</b>
<b>Bracknell Forest</b>	<b>2,170</b>	<b>2,421 (+12%)</b>	<b>961</b>	<b>1,128 (+17%)</b>
<b>Berkshire</b>	<b>18,826</b>	<b>21,934 (+17%)</b>	<b>8,738</b>	<b>10,069 (+15%)</b>
<b>Thames Valley</b>	<b>47,746</b>	<b>54,982 (+15%)</b>	<b>21,849</b>	<b>26,213 (+20%)</b>

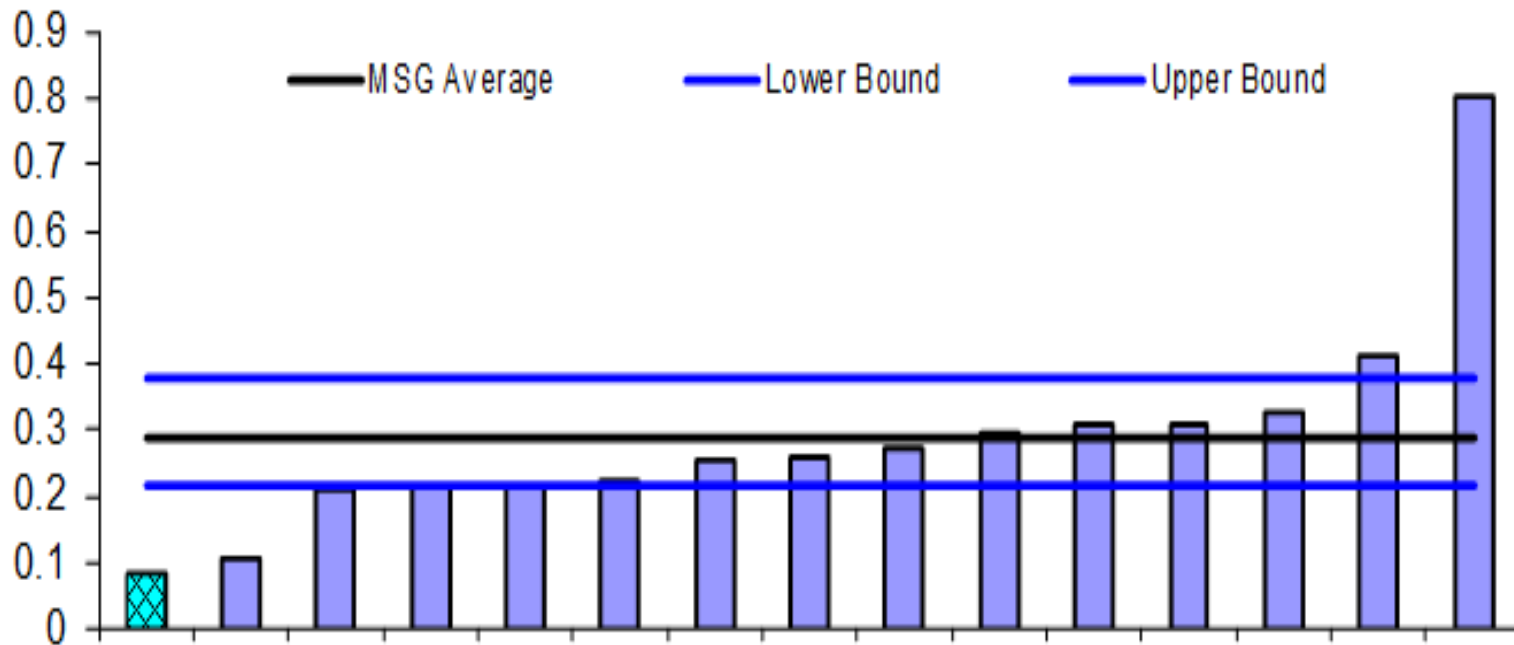
**iQuanta Bar Chart MSG (12 months) - Crimes per 1000 Residents**  
**Thames Valley - Bracknell Forest**  
**Violence against the person (iQuanta)**  
**01 Apr 2019 - 31 Mar 2020**



# Performance against Key Priorities

<b>Knife Crime</b>	<b>2018/19</b>	<b>2019/20</b>	<b>1 April- 31 August 2019</b>	<b>1 April - 31 August 2020 (COVID)</b>
<b>Bracknell Forest</b>	<b>45</b>	<b>55 (+22%)</b>	<b>21</b>	<b>26 (+24%)</b>
<b>Berkshire</b>	<b>634</b>	<b>633</b>	<b>255</b>	<b>Unavailable</b>
<b>Thames Valley</b>	<b>1,505</b>	<b>1,589</b>	<b>650</b>	<b>Unavailable</b>

iQuanta Bar Chart MSG (12 months) - Crimes per 1000 Residents  
Thames Valley - Bracknell Forest  
Most serious violence  
01 Apr 2019 - 31 Mar 2020

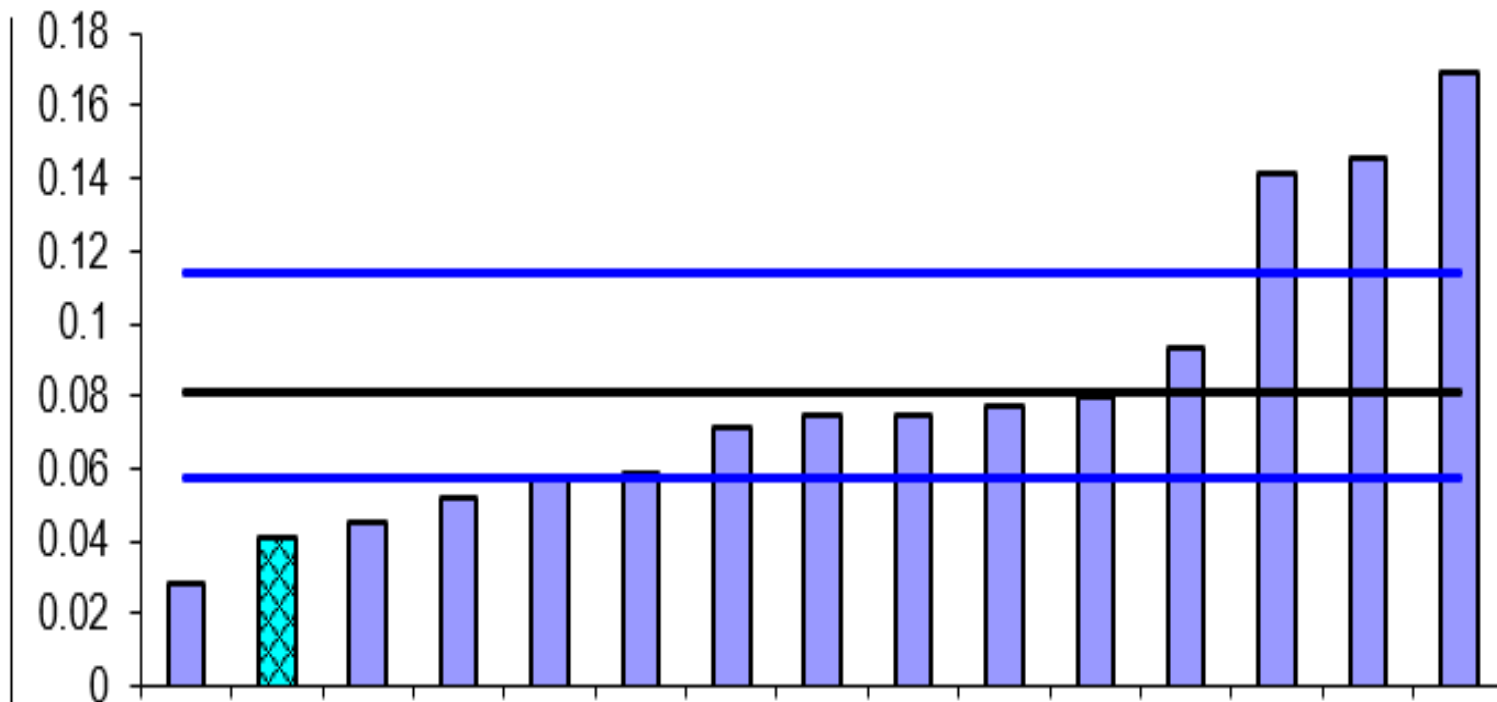


# iQuanta Bar Chart MSG (4 months) - Crimes per 1000 Residents

Thames Valley - Bracknell Forest

Most serious violence

01 Apr 2020 - 31 Jul 2020



# Bracknell Forest Serious Violence: Key points to note

- Most Serious Violence levels are the lowest/2<sup>nd</sup> lowest in MSG and well below lower threshold
- There is a concern that people are using knives during more violent crimes, including domestic offences, but numbers are still low
- Knife crimes are where a sharp, pointed or bladed instrument has been used to pierce the skin or used as a threat
- Police have increased their use of powers to search for people in possession of knives e.g. the Section 60 stop and search powers used in Sandhurst and Crowthorne this month

# Bracknell Forest Drug-Related Incidents: Key points to note

- Bracknell Forest CSP has zero tolerance to any drug dealing
- Police will prioritise drug activity of highest threat, harm and risk and allocate resources accordingly
- Drug dealing is prioritised where it is linked to exploitation and organised crime
- Bracknell has a dedicated substance misuse and exploitation prevention team and police have a dedicated organised crime team to tackle it
- **Advice:** report suspicious activity to 101 or on the TVP webpages



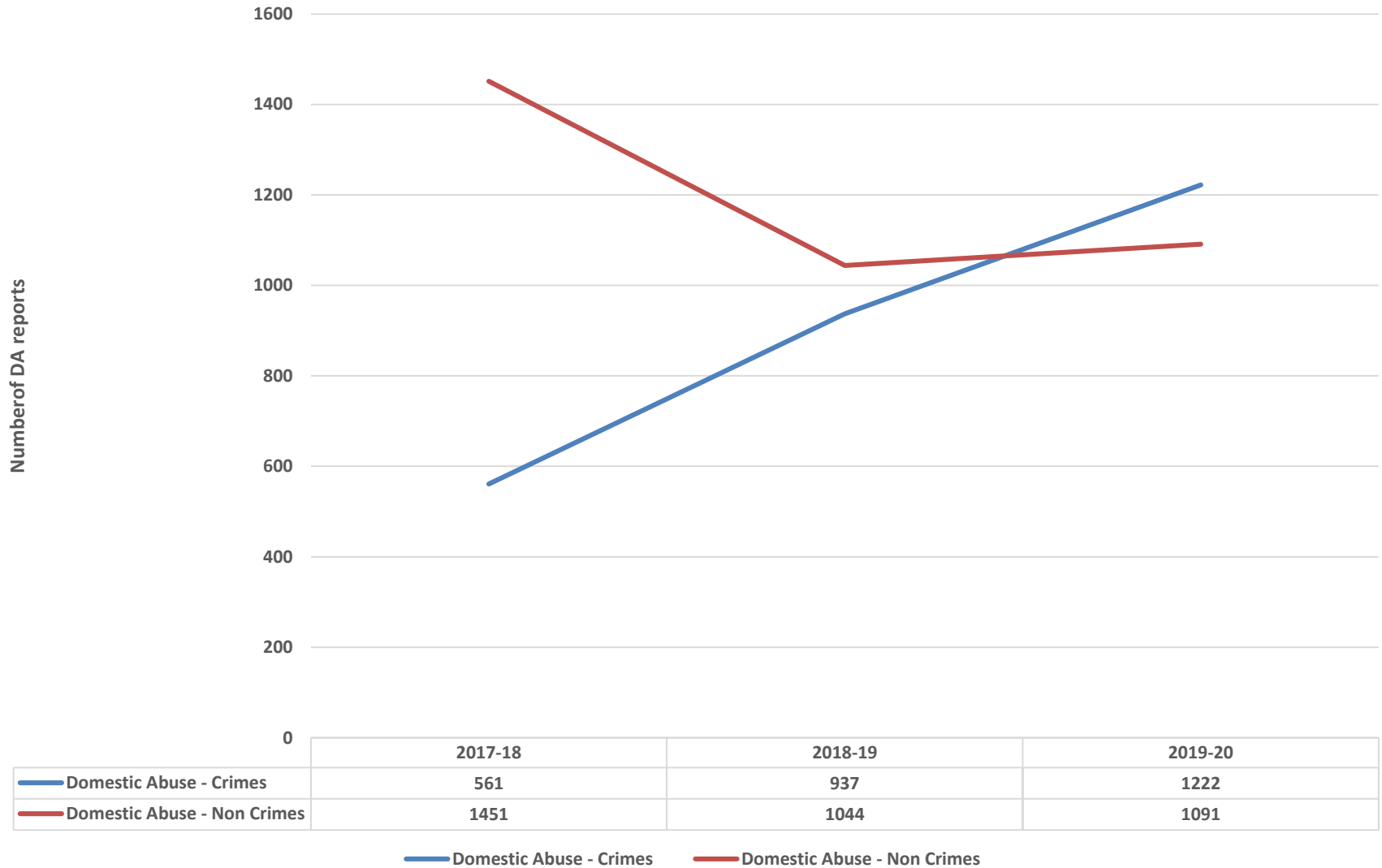
# Performance against Key Priorities

<b>Sexual Offences</b>	<b>2018/19</b>	<b>2019/20</b>	<b>1 April- 31 August 2019</b>	<b>1 April - 31 August 2020 (COVID)</b>
<b>Bracknell Forest</b>	<b>262</b>	<b>289 (+10%)</b>	<b>116</b>	<b>101 (-13%)</b>
<b>Berkshire</b>	<b>1,995</b>	<b>2,177 (+9%)</b>	<b>921</b>	<b>862 (-6%)</b>
<b>Thames Valley</b>	<b>5,433</b>	<b>5,731 (+5%)</b>	<b>2,380</b>	<b>2,232 (-6%)</b>

# Bracknell Forest Sexual Offences: Key points to note

- Most comprise online incidents between young people known to each other e.g. sexual messages and images
- Significant amount of education and awareness has been done in recent years in schools and with parents which is likely to have increased reporting

# Table 1: Domestic Abuse Crime and Non Crime Occurrences (Thames Valley Police)



# Performance against Key Priorities

<b>Domestic Violence against the Person</b>	<b>2018/19</b>	<b>2019/20</b>	<b>1 April-31 August 2019</b>	<b>1 April - 31 August 2020 (COVID)</b>
<b>Bracknell Forest</b>	<b>729</b>	<b>949 (+30%)</b>	<b>336</b>	<b>461 (+37%)</b>
Berkshire	6,667	8,358 (+25%)	3,203	4,032 (+26%)
Thames Valley	16,624	20,303 (+22%)	7,797	10,156 (+30%)

# Bracknell Forest DA: Key points to note

- Increases are in line with Thames Valley increases
- There have been changes in recording practices following inspection recommendations in 2017 and 2019 and this has led to increases
- DA is still the biggest crime we face in Bracknell and continued efforts for education and prevention is needed

# Performance against Key Priorities

<b>Anti-social Behaviour</b>	<b>2018/19</b>	<b>2019/20</b>	<b>1 April – 31 August 2019</b>	<b>1 April - 31 August 2020 (COVID)</b>
<b>Bracknell Forest</b>	<b>1,206</b>	<b>1,145(-5%)</b>	<b>584</b>	<b>655 (+12%)</b>
Berkshire	11,749	11,413(-3%)	5,742	5,543(-3%)
Thames Valley	28,433	28,564 (+46%)	14,387	13,389 (-7%)

# Bracknell Forest ASB: Key points to note

- Many of the ASB recorded incidents were due to COVID breaches during lockdown
- There has been an increase in local community tensions e.g. queuing arguments and neighbour disputes
- The summer ASB in parks issue was successfully resolved through great partnership collaboration
- The process of reporting different types of ASB has now been streamlined on BFC webpages so that the public are directed to the most appropriate service for their complaint

**3.**

**Partnership-Working During  
COVID**



# Domestic Abuse

## Preventing domestic abuse during coronavirus



### Challenge:

Perpetrator/victim/children in lockdown in same space  
Hidden victims with no access to the internet

### Our Response:

Refuse bin hangers  
Town and Country articles  
Guidance made available in different languages  
Easy-read guidance developed for victims with a learning disability and autism  
Police leaflets, posters and till receipt messages in supermarket  
COVID Community Pack to all residents in the borough  
Meetings with other local authorities and partners to monitor trends and referrals

# ASB in Parks and Open Spaces

## Challenge:

Increase in noise, vehicle ASB, litter in June and July



## Our Response:

Detached youth outreach patrols in hotspots to engage with young people

High-visibility police patrols

Feedback collected from young people to inform our understanding

'Protect Your Park' communications appeal to the public

Litter campaign with prominent signage

Partnership taskforce set up with bi-weekly monitoring meetings

# Scams and Online Safety

## Challenge:

Increase in reports of COVID-related scams

More young people online due to lockdown

## Our Response:

Social media messages warning of scams, how to detect them and where to report

Guide for parents on main risks online and how to report

GOV.UK CORONAVIRUS ALERT  
New rules in force now: you must stay at home. More info & exemptions at [gov.uk/coronavirus](https://www.gov.uk/coronavirus) Stay at home. Protect the NHS. Save lives.

We would like to inform you that you have been recorded as leaving your home on 3 occasions yesterday. A fine of £35 has been added to your [gov.uk](https://www.gov.uk) account. For further information please visit [gov.uk/coronavirus-penalty-payment-tracking](https://www.gov.uk/coronavirus-penalty-payment-tracking). Protect the NHS. Save lives.

# Cuckooing



## Challenge:

Increased reports of suspicious activity at addresses  
e.g. multiple visitors, noise, suspected dealing

## Our Response:

Weekly police meetings held to respond to  
suspicious addresses

Advice on cuckooing, what the signs may be and  
how to report any concerns for an adult or child

**4.**

## **CSP Sub-Group Successes**

# Partnership Problem-Solving Groups (PPSGs)



- Multi-agency group of professionals
- Tackles persistent, complex and challenging cases
- Responds to prolific individuals/locations/emerging issues
- The group considers appropriate interventions including civil/criminal orders ranging from a warning letter to a closure order
- 22 cases successfully closed in 2019/20

# MACE (partnership group to safeguard children at high-risk of exploitation)

- Reduction in the cohort compared to last year
- Equal focus on work with victims as well as disruption of perpetrators
- Disruption of County Drug Lines in Bracknell Forest

Modern Slavery and Exploitation training for Practitioners continues to be rolled out borough-wide with 308 trained so far

Public awareness campaign being planned for later this year

# Prevent and Hate Crime

**STOP  
HATE  
CRIME**

THAMES VALLEY  
POLICE

New Prevent Strategy and Action Plan for 2020-23 launched

Weekly interrogation of all reported hate crime to improve understanding and inform a partnership response

Local police Information Advisory Group (IAG) to be re-launched in October to invite community views on policing

Community consultation on equality of access to all public services is being planned



# CSP Key Achievements since 1 April 2019

- Business continuity and re-focussing of priorities during COVID
- Innovative approach to communication of crime prevention advice and victim support during COVID
- Resilience of Community Safety Team and its partners during COVID
- Public Space Protection Order Extension (Town Centre)
- Successful tackling of increase in ASB in parks and open spaces
- Resolution of 22 persistent and complex cases of crime and ASB
- A new Prevent Strategy and Action Plan for the next 3 years
- Proactive efforts to better understand hate crime in our communities
- Streamlined ASB reporting process = better customer experience

# 5. Questions