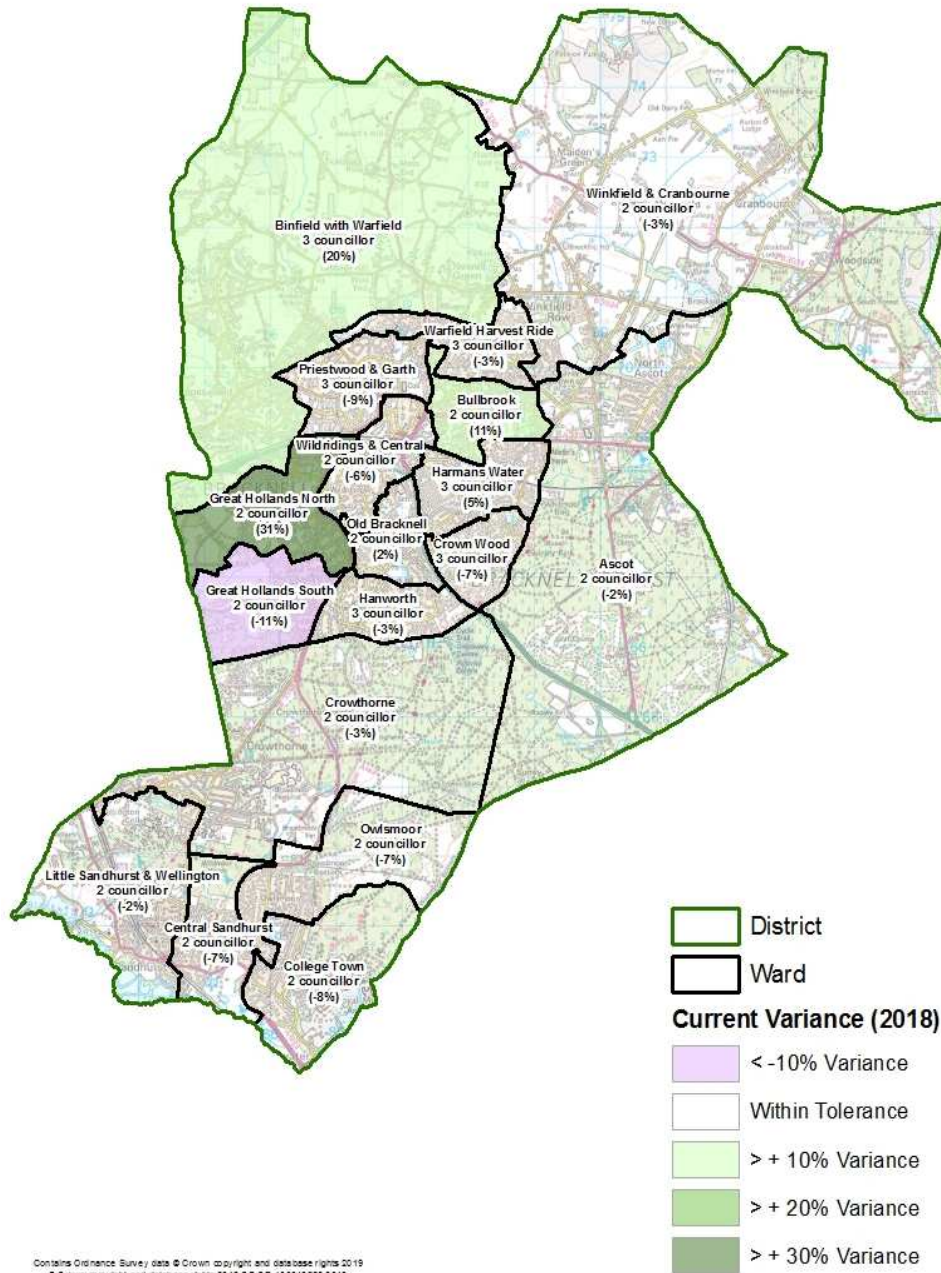


Bracknell Forest Council Electoral Review Full Council Briefing





Why Bracknell Forest?

This review will address the poor levels of electoral equality in Bracknell Forest.

Bracknell Forest's boundaries have not been reviewed since 2002.

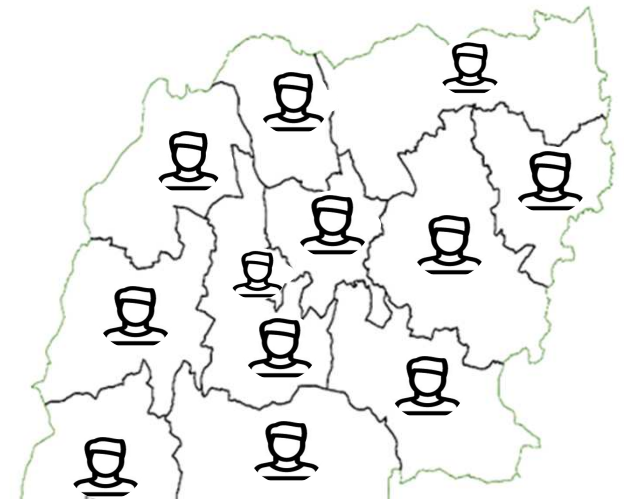
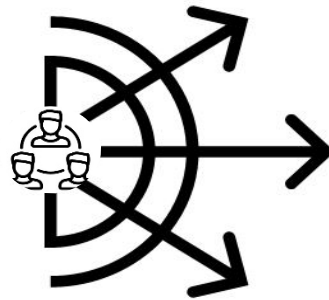
What does an Electoral Review Determine?

1. Total number of councillors
2. Total number of wards
3. Ward boundaries
4. Number of councillors elected to each ward
5. Names of each ward

Review Process



Part 1:
Councillor Numbers



Part 2:
Warding Arrangements

Part 1: Councillor Numbers

Effective representations will address:

Decision Making

Scrutiny &
Partnerships

Representational
Requirements

When?

- Final Submission by: *15 November 2019*

Part 2: Warding Patterns

Effective representations will address:

Electoral
equality for
voters

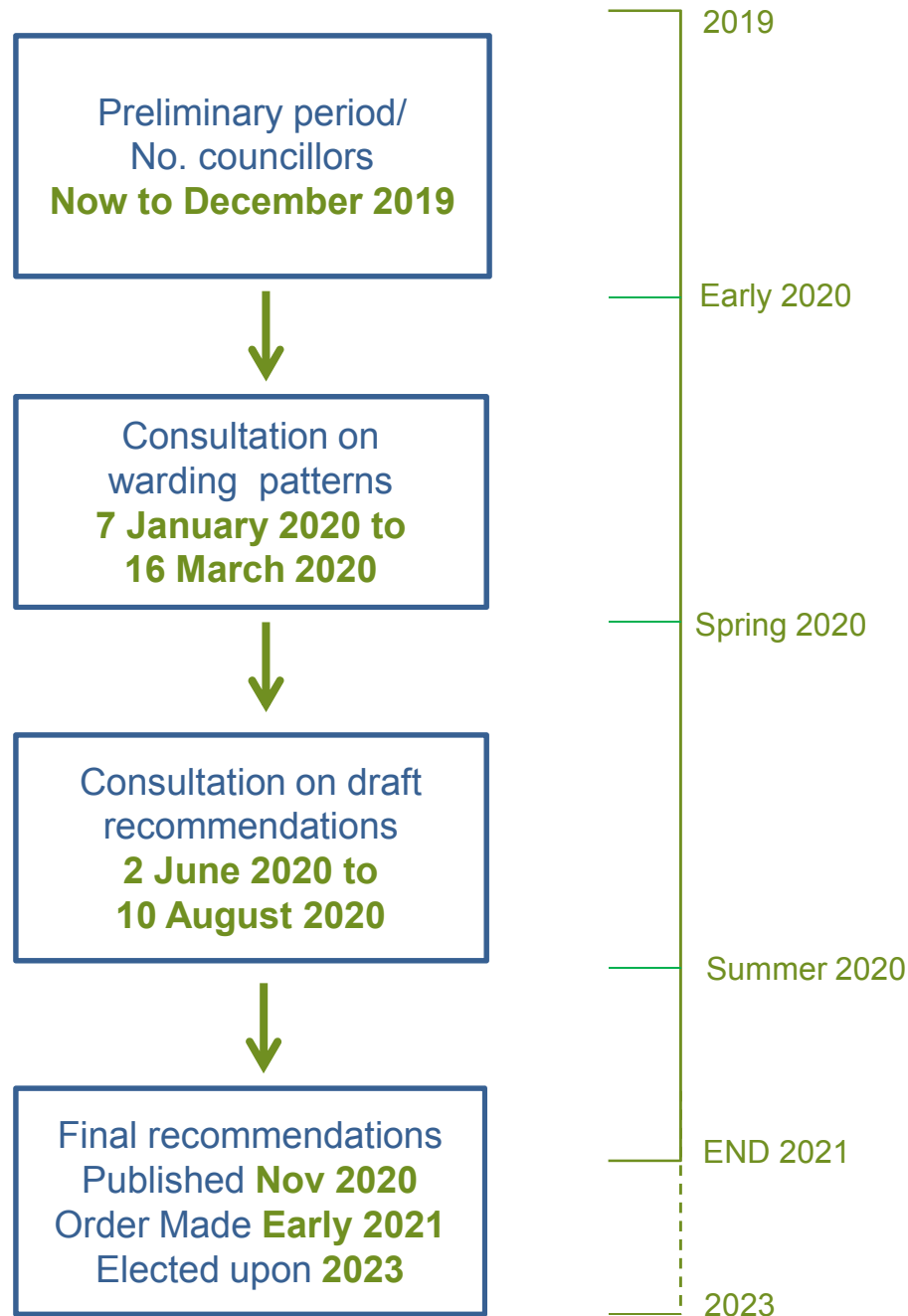
Community
identities and
interests

Effective and
convenient local
government

When?

- Consultation on warding patterns: *7 January 2020 to 16 March 2020*
- Consultation on draft recommendations: *2 June 2020 to 10 August 2020*

Review Timeline



Making a difference

The screenshot displays the website interface for the Local Government Boundary Commission for England. At the top, there is an interactive map with search and navigation tools. Below the map, a navigation bar includes links for 'All Reviews', 'How Reviews Work', 'About Us', 'Media', and 'Policy & Publications'. The main content area features a 'Select a Consultation to start' section with a search bar and a 'Welcome to our c' section with a list of instructions: '- Find out if we are consulting in your area', '- Sign up for proposals', '- Draw your boundaries', and '- Have your say'. A prominent blue banner highlights the 'Cornwall Council Electoral Review'. Below this, a 'Tell us what you think' section explains the commission's role and asks for input on proposed divisions and names. A 'Your opinion matters' section provides contact information and a QR code. The consultation deadline is noted as 17 September 2018.

- Get involved.
- Help shape your council for the long term.
- Help us make it a transparent & consultative process.
- Help influence & encourage.

Local knowledge is invaluable to this process.

Effective Representations

What we want:

- Rationale not assertion.
- What you DO & don't like.
- Alternatives.
- Practical community examples.
- Consideration of all 3 statutory criteria.

We cannot consider:

- Political consequences.
- “It ain't broke don't fix it” arguments.
- Parliamentary boundaries.
- Postcodes or addresses.
- House prices & insurance.

Making a submission

The
Local Government
Boundary Commission
for England

“The two Parish Councils here are in the final stages of producing a joint Kibworths Neighbourhood Plan. It is therefore logical that the new proposed name covering these two parishes reflects the community going forward, i.e. Kibworths ward”

– Kibworth Harcourt Parish Council

“They go to different secondary schools, have different community centres and focal points, have different bus routes, different youth clubs, different parks – so there is a real north/south split reflected in strong community identities”

- Yate Town Council

There are currently 80 seats to be covered by 48 non-executive members which works out at 1.6 seats per councillor. If the size of the council in future was set at 43, this would leave 35 non-executive members. If the number of seats on non-executive committees were reduced as shown, it would still work out at a ratio of 1.6 seats per councillor. This demonstrates that governance arrangements could be accommodated without creating a significant burden on a reduced membership.

- Elmbridge Borough Council (submission on councillor numbers)

Getting in touch

- **Make a submission:** consultation.lgbce.org.uk
- **Website:** www.lgbce.org.uk
- **Email:** reviews@lgbce.org.uk
- **Write:** Review Officer (Bracknell Forest)
1st Floor, Windsor House
50 Victoria Street
London, SW1H 0TL
- **Social media:** @LGBCE