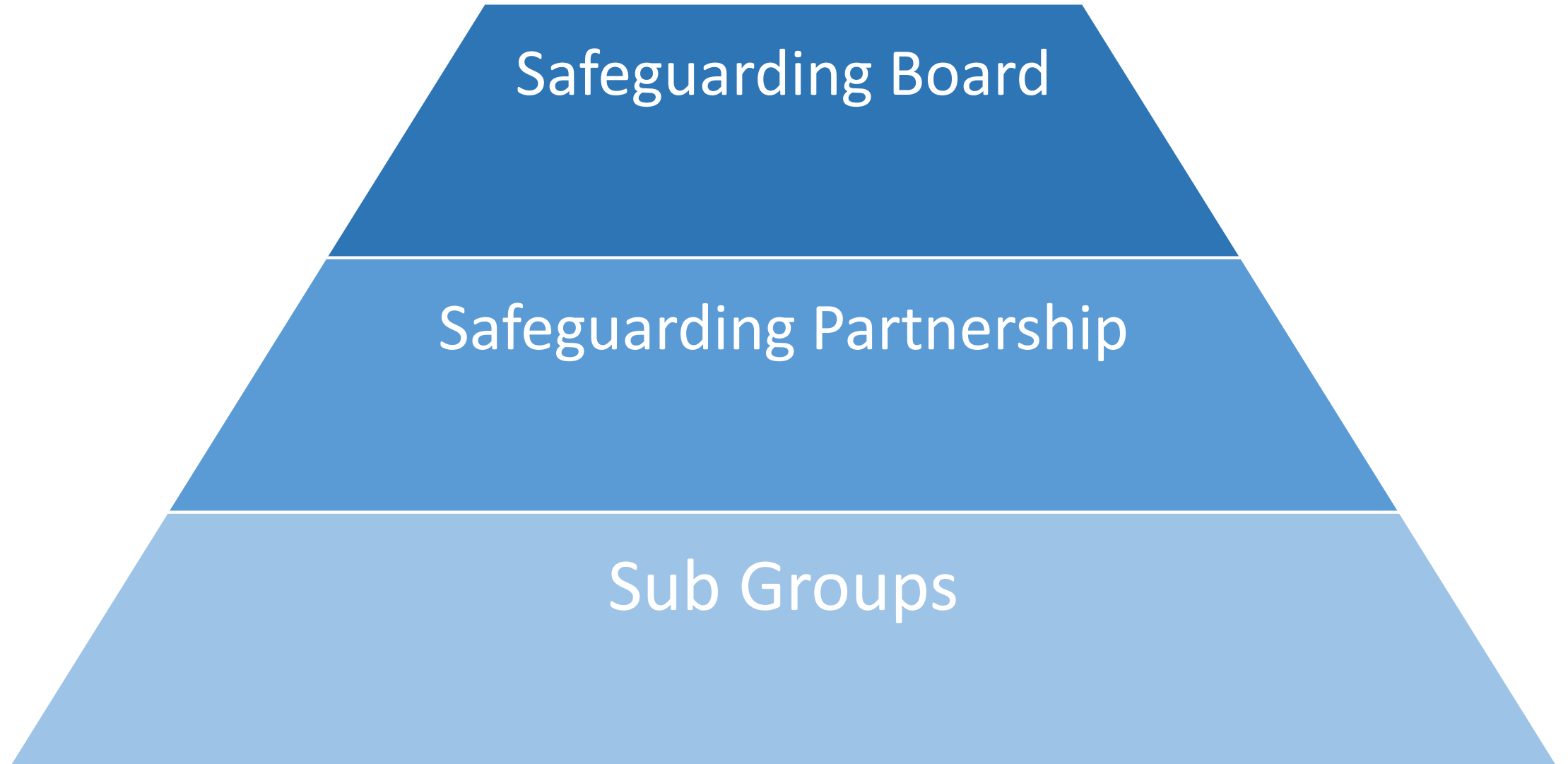


New Bracknell Forest Combined Children
& Adults Multi-Agency Safeguarding
Arrangements

New Safeguarding Partnership Arrangements



Safeguarding Board

Meets 4 times a year

The Safeguarding Board is made up of these three statutory parties:

Local Authority

Police

CCG



To be responsible and accountable for the coordination and direction of multi-agency arrangements to help, protect and safeguard children and adults*



To scrutinise functions of the Safeguarding Partnership, endorse strategies for managing risk and shared decision making



Identify, engage and support partner agencies in ensuring they contribute resources to the Safeguarding Partnership



To review information and receive assurance enabling strategic leadership that drives action for improvement beyond usual constraints and/or boundaries



To strengthen links to other local strategic partnerships e.g. Community Safety Partnership, Health & Well Being Board, Health strategic safeguarding group, to address local needs



Require partners provide assurance that they are commissioning safe services that meets identified need



Promote robust challenge and ensure transparent escalation policies and processes are in place



Agree delegated responsibilities and functions to the Safeguarding Partnership and to Task & Finish / Sub Groups



To drive the strategic plans and produce annual reports



To ensure Safeguarding Adult Reviews / Serious Case Reviews are conducted, approve their publication and implement local and national learning

*Fulfils requirements of Care Act 2014 section 43, 44 and schedule 2 and including required functions of Safeguarding Adult Boards

Safeguarding Partnership

Meets 4 times a year

Statutory
Partners



Local
Partners

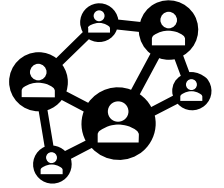
To maximise collaborative arrangements to prevent harm, abuse and neglect

To support local, regional and national functions that identify new issues / threats and escalate emerging risks to the Board

To facilitate problem solving



Ensure information sharing (including the provision of timely and proportionate responses when abuse or neglect have occurred) and effective decision making



Support practitioners to develop trusting relationships that ensure effective safeguarding

Delegating problem-solving functions to Task & Finish / Sub Groups including relevant strategic partnerships

To receive routine assurance from Task & Finish / Sub Groups and partner agencies

Challenge appropriately and hold one another to account

Identification and dissemination of learning that shapes practice

To ensure that the voice of the vulnerable individual (child / adult at risk) & views of practitioners informs local safeguarding arrangements & also provides assurance that those arrangements are being implemented



Identify key priorities that are subject to robust analysis



To carry out functions delegated to it

Gaining assurance for the safety and well-being of local people

Bracknell Forest Independent Chair and Scrutineer

Functions include:

- ✓ Providing leadership and scrutiny
- ✓ Promoting collaborative working
- ✓ Promoting good practice and offering constructive challenge
- ✓ Providing advice, support and encouragement
- ✓ Ensuring partners promote and support community engagement
- ✓ Holding partner agencies to account
- ✓ Ensuring links with the other strategic boards are constructive
- ✓ Developing and maintaining their knowledge and expertise in relation to safeguarding
- ✓ Endorsing and promoting good practice and quality services

Business Unit

Business Unit supports the Safeguarding Board and Safeguarding Partnership, working with Independent Chair / Scrutineer (IC/S) enabling, influencing and facilitating delivery against agreed business plan

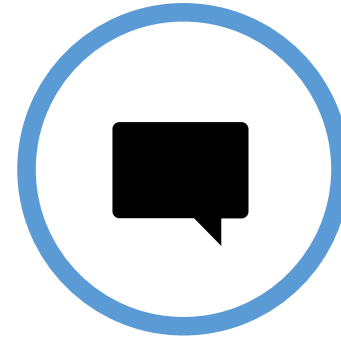
The Business Unit functions include:



Working with the Independent Chair /Scrutineer to provide support and challenge



Maintain independence and support scrutiny functions



Provides independent advice on statutory requirement and best practice



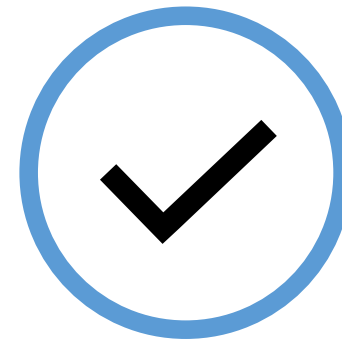
Leading, developing and progressing board business



Supporting meetings



Drafting documents



Ensuring the board runs effectively

Sub Groups

Sub Groups report to the Safeguarding Board and
Inform the Safeguarding Partnership

Pan-Berks Sub Groups

Support continues for pan-Berkshire sub groups, to include new arrangements for Child Death Overview Panel (CDOP).

Adults

Policy and
Procedures

Children

Policy and
Procedures

Child
Exploitation

Section 11

Child Death
Overview
Panel

East Berks Sub Groups

Support continues for the adult Learning and Development (L&D) Sub Group. The Board to explore a similar children's group.

There is agreement to develop an East Berks Adults Safeguarding Adult Review Sub Group. The Board to explore an East Berks Children's Serious Case Review Sub Group.

Adults

Learning &
Development

Safeguarding Adult
Review

Children

Learning &
Development

Serious Case
Review

Sub Groups

Sub Groups report to the Safeguarding Board and inform the Safeguarding Partnership

Bracknell Forest Sub Groups

It is proposed that a Transition task & finish Group consider closer alignment between sub groups.

The Board to consider the merits of the following integration:

Old

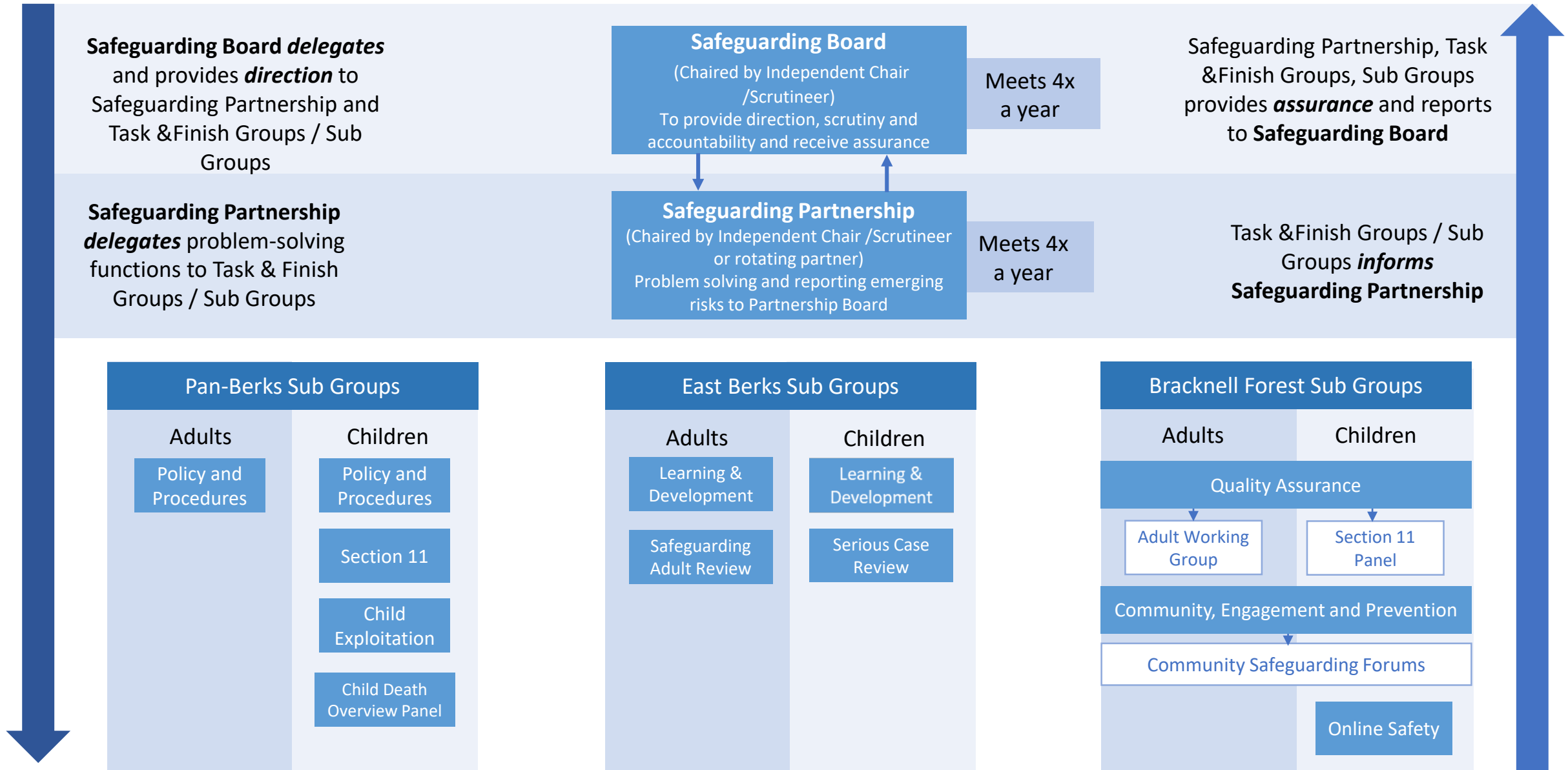


New

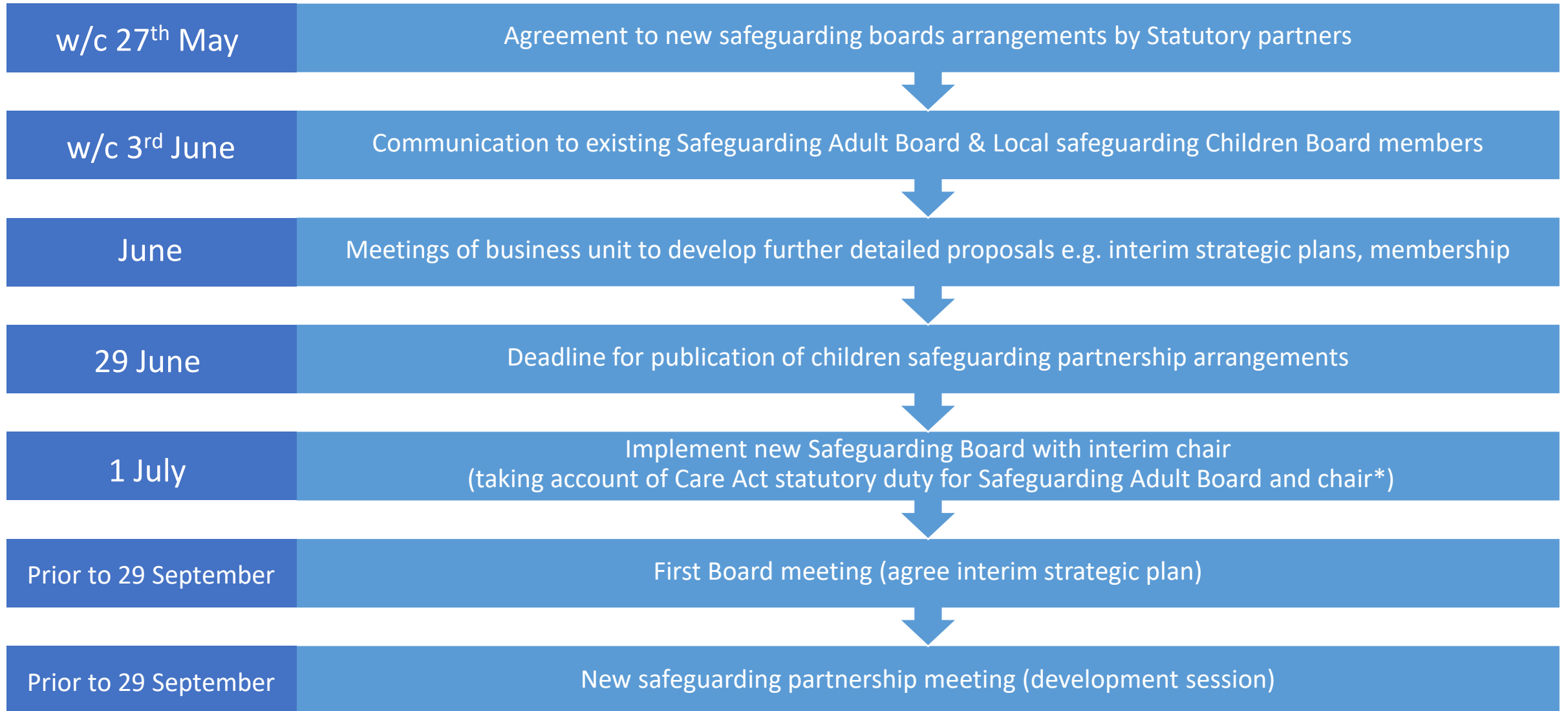


Proposed Safeguarding Partnership Model

Sub Groups will be reviewed as the board develops its new strategic direction.



Timescales



*Each Local Authority must set up a SAB; Membership must include the Police and CCG.

The LA must appoint the Safeguarding Adult Board Chair in consultation with partners; chair accountable to LA chief executive