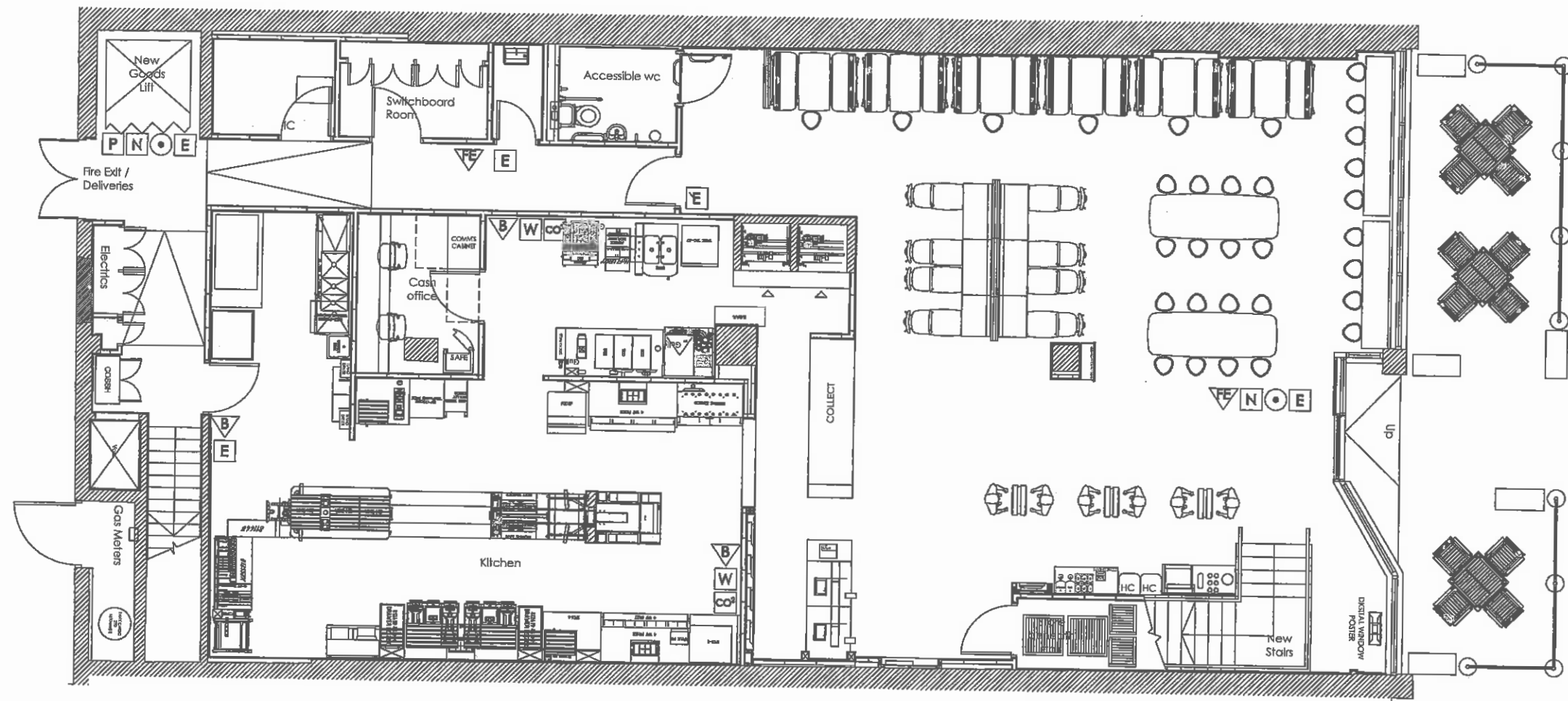


BRACKNELL FOREST COUNCIL  
RECEIVED  
13 NOV 2010



NOTES

**FIRE STRATEGY KEY**

SYMBOL DESCRIPTION

- Fire Exit Door  
Doors to include emergency release
- "FIRE DOOR - KEEP SHUT" signage
- 1.5kg CO<sub>2</sub> fire extinguisher with description signage to wall
- 6ltr AFFF Foam spray fire extinguisher with description signage to wall
- Wet Chemical fire extinguisher with description signage to wall
- Fire blanket with description signage to wall
- Push bar
- Fire Instruction Notice
- Break glass alarm point
- "FIRE EXIT" signage  
100mm white back letters on green background.

Note:  
All fry stations have automatic fire suppression devices fitted.

Licensable activity:  
Sale of Hot food & Drink  
after 11pm.

Rev.	Date	Amendment

PROJECT

1546 Bracknell

Unit 43  
The Lexicon Centre  
Bracknell  
RG12 1EA

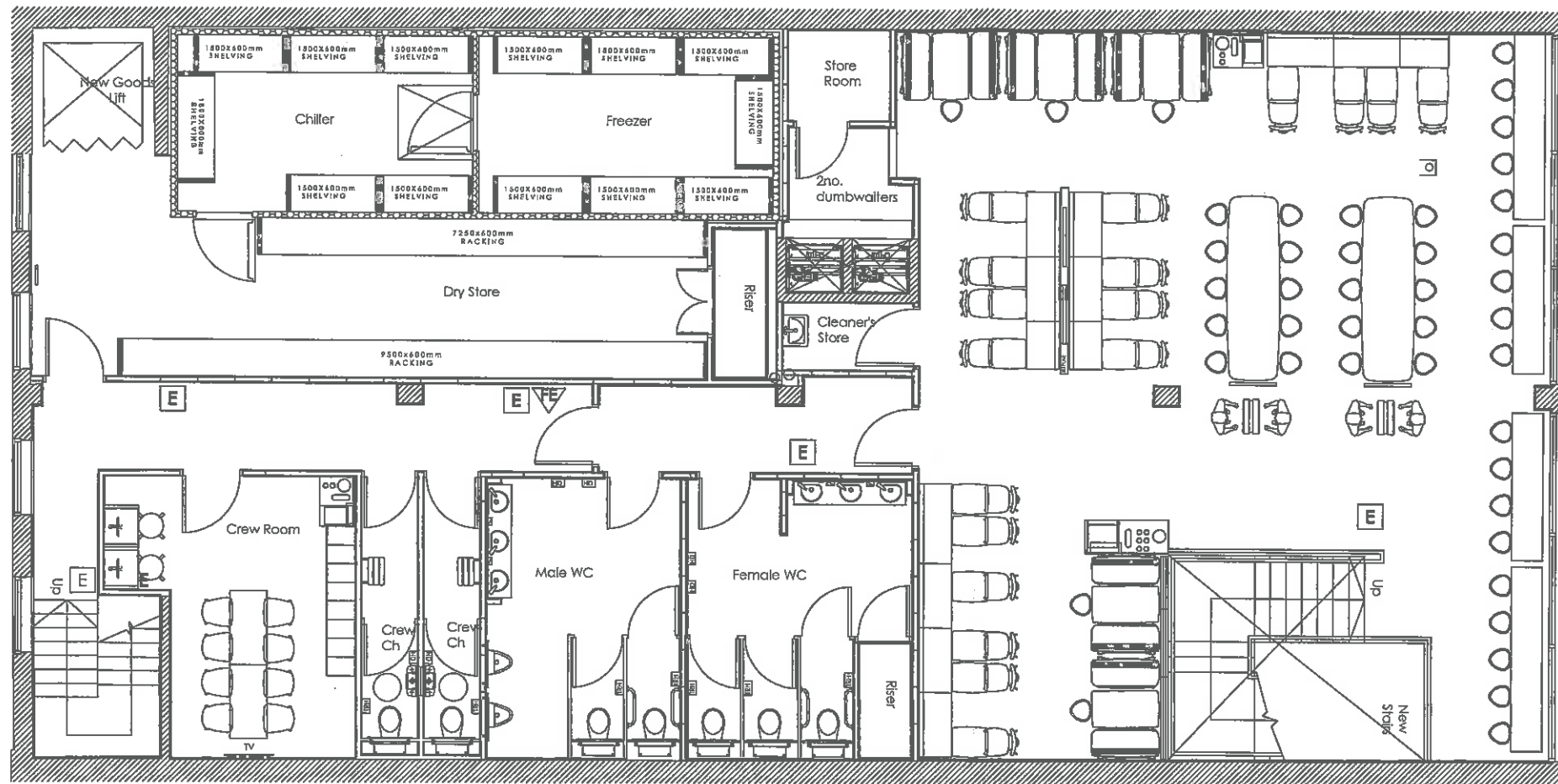
TITLE

Ground floor plan  
(For Licencing)

Date:	Sept 2018	Drawn:	C.T.S.G.	Discipline:	Arch
Scale:	1:100@A3	Type:	DRG. No.	Issue:	001
			LJ/1546/001		

BRACKNELL FOREST COUNCIL  
RECEIVED  
13 NOV 2013

Annex B - plans



NOTES

**FIRE STRATEGY KEY**

SYMBOL DESCRIPTION

FF	Fire Exit Door Doors to include emergency release
F	FIRE DOOR - KEEP SHUT signage
CO2	1.5kg CO <sub>2</sub> fire extinguisher with description signage to wall
W	5ltr AFFF foam spray fire extinguisher with description signage to wall
Wch	Water Chemical fire extinguisher with description signage to wall
B	Fire blanket with description signage to wall
P	Push bar
N	Fire Instruction Notice
●	Break glass alarm point
E	"FIRE EXIT" signage 100mm white block letters on green background.

Note:  
All fry stations have automatic fire suppression devices fitted.

Licensable activity:  
Sale of Hot food & Drink after 11pm.

Rev.	Date	Amendments

PROJECT

1546 Bracknell

Unit 43  
The Lexicon Centre  
Bracknell  
RG12 1EA

TITLE

First Floor Plan  
(For Licencing)

Date:	Sept 2018	Drawn:	C.T.S.G.	Discipline:	Arch
Scale:	1:100@A3	Type:	DRG. No.	Issu.	001