



Annual SACRE Report 2016-17

The SACRE has several aspects to its role. These include:

- ❖ Advising the local authority on matters relating to collective worship and religious education
- ❖ Advising on methods of teaching and resources for religious education
- ❖ Considering requests for determinations from any schools which apply to have daily worship which is other than of a broadly Christian character
- ❖ Identifying and revising an Agreed Syllabus for religious education

In principle, every pupil is entitled to RE of the highest quality... A core duty of the SACRE is to gain an overview of the quality of the RE provision in LA Maintained schools and to develop effective strategies to promote the highest standards." - National Association of SACREs (NASACRE)

To help with this endeavour the Bracknell Forest Borough SACRE works with NASACRE (the National Association of SACREs), the Diocese of Oxford and the other Berkshire SACREs.

This report sets out a summary of the work of the Bracknell Forest SACRE over the academic year 2016 - 2017.

The minutes of the meetings which give more detail can be found at

<http://democratic.bracknell-forest.gov.uk/mgCommitteeDetails.aspx?ID=157>

For more information about the role and business of the SACRE please contact:

The Clerk: Emma.Young@bracknell-forest.gov.uk

The Local Authority Officer: Steve.Bogg@bracknell-forest.gov.uk

Adviser: anne.andrews@oxford.anglican.org 07884 6550

Introduction

The Annual Report shows that this has been a busy and productive year for the Bracknell Forest SACRE. We are grateful for the hard work and commitment of many people who give their time and expertise to support the teaching of Religious Education and the provision of Collective Worship in Bracknell Forest. I would like to take this opportunity to thank our Local Councillors for their work on SACRE – we appreciate the time that they give and hope that SACRE will remain a high priority in their busy schedules. Thank you also to our SACRE members drawn from schools, places of worship, and teaching Unions for their expertise, insight and contributions in meetings. We are grateful to Madeline Diver who continues to hold the role of Vice Chair and to our Clerk Lizzie Rich who has ably supported the SACRE with all administration, paperwork and kept us on track with deadlines; we wish Lizzie well as she moves to new work within the Local Authority and welcome Emma Young as our new Clerk. Special thanks are due to Anne Andrews our Professional Adviser. Anne’s experience, enthusiasm and commitment to supporting the teaching of RE in our local schools makes her a key part of SACRE and an inspirational colleague.

I wish everyone well for the new challenges and priorities for 2017-2018.

Rev Tracey Williams

Chair

September 2017

Standards, quality & provision of RE

- Subject leader training continues to be well attended and subject leaders contact with the adviser outside of sessions to seek advice.
- One of the schools that had previously had no entries for GCSE RE had responded positively to a request for information and set out the plans to gradually bring RE into KS4 for examinations. This will be monitored during the coming year, and hopefully the first results will be available in 2018.
- Discussions have been held about ways to improve monitoring and the adviser has attended AREIAC meetings in London, collecting monitoring materials from other SACRES.
- Monitoring of RE policies on schools' websites has begun and schools not displaying a policy have been asked to provide a copy. Most policies comply with legal requirements. The next step will be to offer support to those schools where policies appear to be deficient. This is ongoing work.
- A hub training session on RE will encourage the SACRES in Berkshire to share information and procedures on monitoring and evaluating RE provision.
- GCSE statistics have been analysed by the LA; 279 pupils across the borough were entered for GCSE RS and results overall are in line with national averages, although on progression/value added measures results are below national average. The average points score is 5.00, with 75% attaining 4+. Most schools are entering small numbers - one or at most two classes worth of children. One school has not entered any; one school enters most of its cohort. There has been a slight dip in achievement and progress in GCSE RS this year, which reflects some of the uncertainty over changes to GCSE. An overview is provided on page 7.
- A-Level RS statistics have also revealed a fall in standards this year, both compared to the previous two years and to this year's national results. Over the whole local authority, progress measures are broadly in line with the average, but the highest performing school has had a fall in progress, although pupils continue to perform slightly above the national average. This is a cause for some concern, as next year will be the first of the new syllabus exams. Also interesting to note is that only three of the secondary schools enter pupils for A-Level RS.
- No complaints have been received by SACRE about either the quality or provision of RE.

Agreed Syllabus

- Further preparations have been made for the syllabus review that will begin in earnest in September 2017. The Pan-Berkshire hub co-ordinator will head up the review as part of the hub. The Local Authority has been asked to convene the Agreed Syllabus Conference.
- SACRE believes that the LA has paid the contribution to the hub for the review.
- Subject leader sessions have discussed the current syllabus and recommendations will be made to the ASC in due course.
- Faith and Belief conferences have been called for October 2017 to enable representatives of faith groups to contribute to the relevant sections of the syllabus.
- A training session on SACRE's duties with regard to RE is planned as part of the SACRE hub. This will include discussion of the purpose of RE in preparation for the syllabus review.

Standard, quality & provision of Collective Worship

- A trawl of school websites revealed that many schools did not have CW policies displayed and so a request was sent to school headteachers and chairs of governors asking for a copy of the policy.
- 16 of the 23 schools complied or had policies on their websites; most policies show that schools are at least aware of their legal duty to provide a daily act of worship. Follow-up requests have been sent to schools that have not yet complied.
- The scrutiny of the policies revealed some muddling between the requirements of CW and RE, so SACRE advised the LA that revised guidance on CW needed to be written and distributed. This guidance has been produced and will be sent out to schools in September 2017.
- One school CW policy contained a veiled request for a determination. The LA was asked to investigate further, but as there was no policy to deal with determinations, SACRE decided that one should be written. This has also been done and approved by SACRE. The executive member will present the document to the relevant body for approval.
- The LA has liaised with the school concerned; a large-scale change in staffing at the school, including governors means that a determination is no longer being considered.
- Along with the guidance, SACRE is planning an “Assembly Roadshow” to showcase good practice. This will be offered to schools during the 2017-8 period.
- No requests for determinations have been received, nor have there been any complaints regarding Collective worship.

Advice and training offered to LA, schools & governors

- SACRE was concerned that the religious artefacts were not being borrowed sufficiently; the LA has responded by including them in the electronic cataloguing of the Resource Centre. Schools can now have a logon to see and book the resources for a 6-week loan. The RE books have also been catalogued and some of the out of date material removed.
- The materials produced by the hub Crossing the Bridges Project are now hosted, along with the Locally Agreed Syllabus, on the schools’ website. This includes the recently published Crossing the Bridges Directory of Places of Worship and visitors.
- Three RE subject leader meetings have been offered and well attended this year.
- The termly SACRE news is distributed to all schools, including Academies, in the borough.
- Schools were offered the opportunity to take part in an “On Location Day” training event. Three places of worship were visited, using the Crossing the Bridges materials and further materials were made available, which were used in training for RE subject leaders.
- The LA has been advised that cuts to budgets are going to make it hard for SACRE to carry out its duties. It has also been advised that the newly appointed schools officer has yet to engage fully with his duties.
- The LA has been advised that changes to the SACRE constitution to Group C are needed to cope with the change in the educational landscape, most notably the amalgamation of the ATL and the NUT into the National Education Union. The proposed changes are being taken by the executive member to the relevant body on the council.
- SACRE has advised the LA that a higher profile is needed for SACRE, RE and CW. SACRE will propose some ways to do this in the new academic year.

Management of SACRE

- SACRE has met three times this year: 7th November
28th February
15th June
- All meetings have been quorate and generally well attended, though yet again there has been some change of personnel and the teacher vacancies have not been filled. Hopefully the decision taken by SACRE to change the constitution of Group C to a more general requirement to be a member of the teaching profession or a union, will make it easier to recruit teachers interested in RE and CW to SACRE.
- A new Chair was appointed at the November meeting, and since the appointment agendas have been planned by the chair and the adviser to SACRE, in communication with the vice-chair and the clerk. The newly appointed schools officer has not yet engaged with SACRE.
- Meetings have been well run, well recorded and draft minutes have been produced very quickly and efficiently, ensuring that members are aware of the actions that were agreed at the meetings.
- SACRE also contributed to the Big NASACRE survey and a member attended the NASACRE AGM in York in May.
- Sadly, many of the councillors leave meetings early to attend other council meetings. SACRE is considering sending a request to the LA to allow SACRE a higher priority, and give members enough time to attend meetings.

Contribution to Local Authority Wider Agenda

- The key contribution of SACRE to the social cohesion agenda has been through the development of the Crossing the Bridges project. This is a project designed to enable schools and places of worship to establish better contacts and to raise the quality of visits to places of worship.
- Members of SACRE were also invited to attend the Interfaith events in November and June.

Conclusion

Bracknell Forest SACRE continues to grapple with the current issues surrounding Religious Education and Collective Worship in a time of ever reducing budgets and ever increasing busyness of local authority members and councillors.

SACRE takes its duties seriously and strives to improve the way that it engages with schools about Religious Education and Collective Worship. Members are willing to learn and engage with discussions and participate with hub training. SACRE is keen to see improvements in the quality of teaching of RE and the provision of Collective Worship. Members are excited by the idea of an Assembly Roadshow.

There is frustration with the continual changes to the educational landscape in England and concern over the role of SACRE as more schools move out of Local Authority Control. This is tempered though by encouragement from the numbers of teachers who continue to attend RE training and respond to SACRE's requests to schools.

SACRE hopes that the report of the Commission on RE (CoRE) will provide a positive way forward for SACREs for the future.

Anne Andrews (Adviser to SACRE)

SACRE Membership and Attendance 2016-17

Group Represented	Name	7 November 2016	28 Feb 2017	15 June 2017
Free Church (A)	Rev Jackie Case	Yes	x	x
Free Church (A)	Manfred Lemke	Yes	yes	Left
Free Church (A)	Wayne Erasmus			Yes
Free Church (A)	Vacancy			
Catholic (A)	Vacancy			Juanita Dunlop
Catholic (A)	Chris Cooper	apologies	resigned	Robyn Lynch
Muslim (A)	Arfan Rashid	yes	yes	apologies
Hindu (A)	Vacancy			
Buddhist (A)	Vacancy			
Sikh (A)	Vacancy			
Jewish (A)	Zvi Solomons	apologies	X	yes
C of E (B)	Mark Olney	yes	yes	apologies
C of E (B)	Rev Tracey Williams (Chair)	apologies	yes	yes
C of E (B)	Rev Paul Collins	Yes	Left	Richard Harling
C of E (B)	Carol Logan	apologies	yes	yes
NAS/UWT (C)	Vacancy			
VOICE (C)	Madeline Diver (Vice chair)	yes	apologies	yes
NUT (C)	Deborah Owen	yes	apologies	yes
ATL (C)	Vacancy			
NAHT (C)	Ruth Jackson	apologies	yes	yes
SHA (C)	Vacancy			
Councillor (D)	Gareth Barnard	apologies	yes	yes
Councillor (D)	Dorothy Hayes	yes	yes	yes
Councillor (D)	Moira Gaw	yes	yes	yes
Councillor (D)	Isabel Mattick	apologies	yes	yes
Councillor (D)	Ian Leake	yes	yes	apologies
Co-opted	Kathy Hadfield	yes		yes
School Adviser	Chris Salt	yes	Yes	
School Adviser	Steve Bogg			X
Professional Adviser	Anne Andrews	yes	yes	yes
Clerk	Elizabeth Rich	yes	yes	yes

Key:

Yes = present	X= no apologies	Apologies given	Vacancy
Left/resigned	Observer	New member	

GCSE: Religious Education Results 2016-17

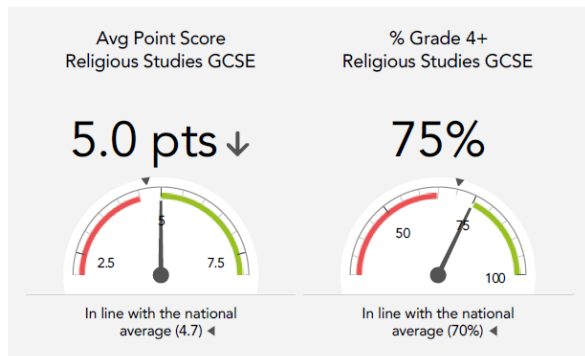
Bracknell Forest · Religious Studies GCSE

2017 | KS4 | VA

Overview

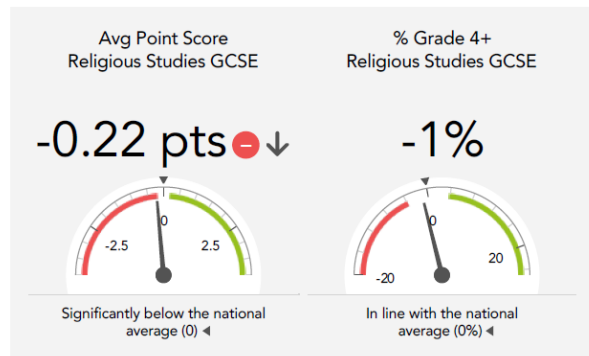
LA KS4 Attainment 2017 · Actual results

Religious Studies GCSE · 279 pupils



LA KS4 Progress 2017 · Value Added

Religious Studies GCSE · 274 matched pupils



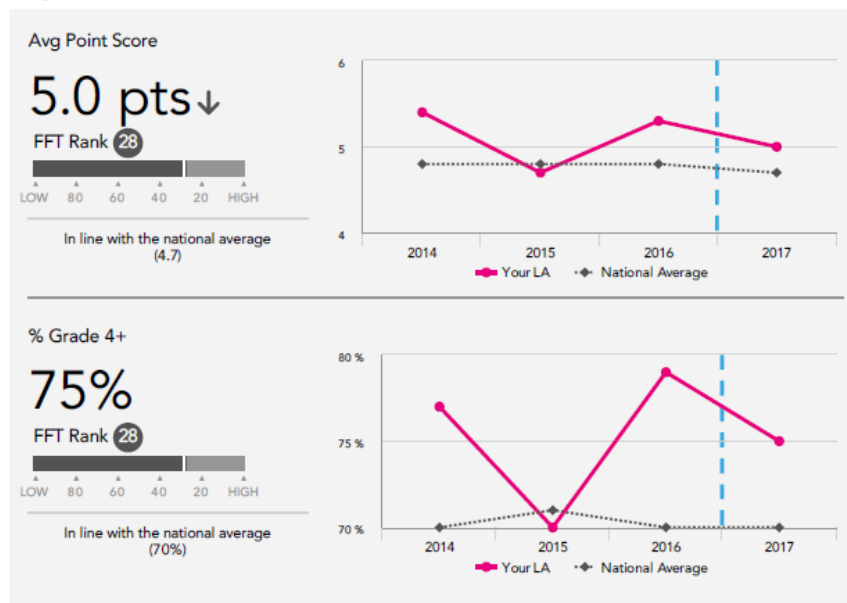
Bracknell Forest · Religious Studies GCSE

2017 | KS4 | VA

Attainment & progress

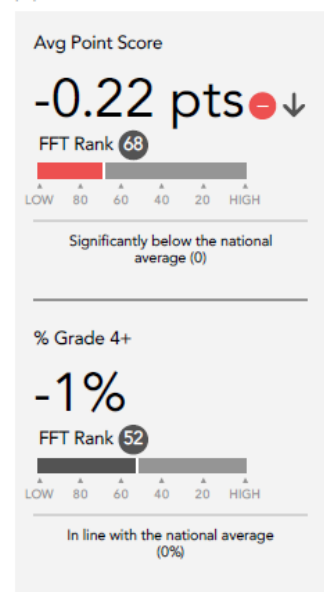
LA KS4 Attainment 2017

Religious Studies GCSE · 279 pupils



LA KS4 Progress 2017

Religious Studies GCSE · 274 matched pupils



LA KS4 performance summary Religious Studies GCSE

	Actual results			Pupil progress		
	2015	2016	2017	2015	2016	2017
Number of Pupils / % Matched	340	302	279	95%	95%	98%
Avg Point Score	4.7 ↓	5.3 ↑	5.0 ↓	-0.32 ↓	+0.21 ↑	-0.22 ↓
% Grade 4+	70%	79% ↑	75%	-4% ↓	+1%	-1%
% Grade 5+	46% ↓	64% ↑	56% ↓	-4% ↓	+3% ↑	-3%
% Grade 7+	25% ↓	36% ↑	30%	-5% ↓	+4% ↑	-4% ↓
% Grade 1+	98%	100% ↑	99%	-2%	-0%	-1%

A Level RS results

Overview

LA KS5 Attainment 2017 · Actual results
Religious Studies · 46 pupils

Average Point Score
Religious Studies

33 pts

In line with the national average (35) ↴

% A*-C
Religious Studies

74%

In line with the national average (79%) ↴

LA KS5 Progress 2017 · Value Added
Religious Studies · 46 matched pupils

Average Point Score
Religious Studies

-1.1 pts

In line with the national average (0) ↴

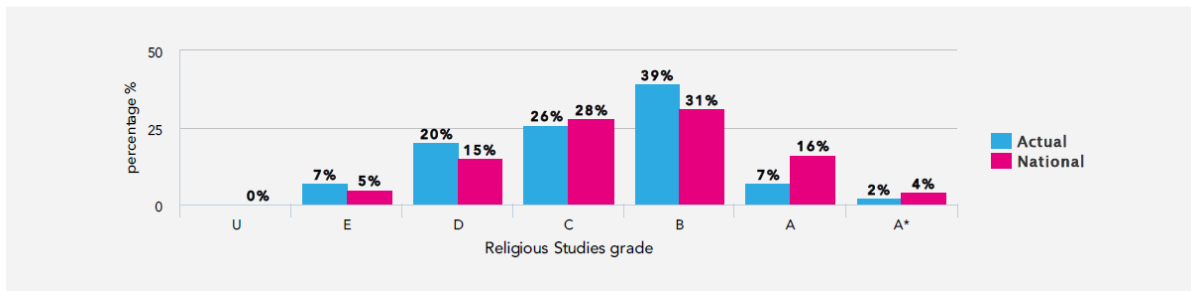
% A*-C
Religious Studies

-1%

In line with the national average (0%) ↴

LA KS5 higher and lower performing schools 2017 Religious Studies

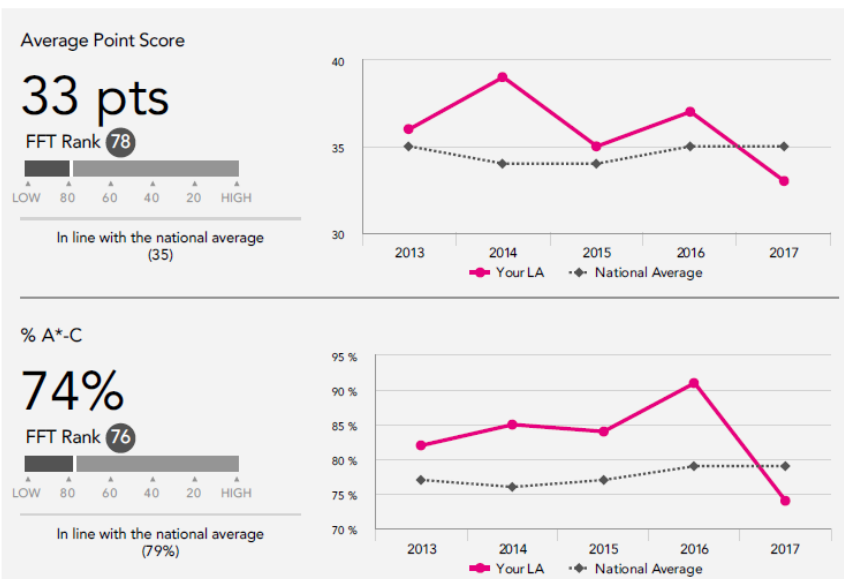
LA Grade distribution 2017 · actual results · 46 pupils



Attainment & progress

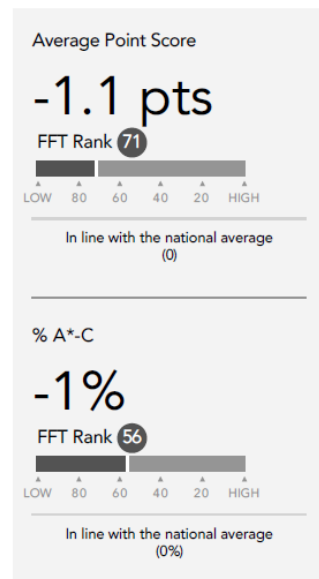
LA KS5 Attainment 2017

Religious Studies · 46 pupils



LA KS5 Progress 2017

Religious Studies · 46 matched pupils



LA KS5 performance summary Religious Studies

	Actual results			Pupil progress		
	2015	2016	2017	2015	2016	2017
Number of Pupils / % Matched	38	43	46	100%	100%	100%
Average Point Score	35	37	33	+2.6	+2.6	-1.1
Average Grade	B-	B-	C+	+0.3	+0.3	-0.1
% A*-A	24%	26%	9%	+8%	+7%	-10%
% A*-B	50%	51%	48%	+5%	+2%	+1%
% A*-C	84%	91%	74%	+10%	+12%	-1%
% A*-E	100%	100%	100%	+2%	0%	0%