

Date Published: 19 January 2021



LOCAL OUTBREAK ENGAGEMENT BOARD

19 JANUARY 2021

SUPPLEMENTARY PAPERS

TO: ALL MEMBERS OF THE LOCAL OUTBREAK ENGAGEMENT BOARD

The following papers were updated and made available at the above meeting.

These were not available for publication with the rest of the agenda.

Kevin Gibbs
Executive Director: Delivery

	Page No
4. COMMUNITY AND SCHOOLS LATERAL FLOW TESTING	1 - 10
To provide an update on the status of lateral flow testing for COVID-19 asymptomatic residents in community and in within the Borough.	

This page is intentionally left blank

Local Outbreak Engagement Board

Update on school and community testing programmes

Tuesday 19 January 2021

Epidemiology update

Situational Awareness indicators from 7th – 13th January* in comparison to previous 7-day period

Area	Individuals tested per 100.000 population (7-day moving average)		Percentage individuals test positive (weekly)		Cases per 100.000 population - all ages (weekly)		Cases per 100.000 population - 60+ (weekly)		Number of confirmed cases (last 7 days)
Bracknell Forest	537.0	↑	14.1	↓	479.8	↓ (32%)	378.0	↓ (24%)	588
Reading	642.4	↑	17.7	↑	735.6	↑ (3%)	460.5	↓ (2%)	1,190
Slough	676.2	↑	24.7	↓	1018.5	↓ (5%)	986.7	↓ (6%)	1,523
West Berkshire	483.9	↑	10.5	↓	329.4	↓ (5%)	226.2	↓ (2%)	522
Windsor and Maidenhead	548.0	↓	14.4	↓	471.5	↓ (25%)	457.8	↑ (1%)	714
Wokingham	467.6	↑	13.2	↓	401.5	↓ (26%)	380.1	↑ (6%)	687
South East	602.8	↓	13.9	↓	529.8	↓ (22%)	444.1	↓ (13%)	47,213

Source: PHE Regional South East Situational Awareness Report

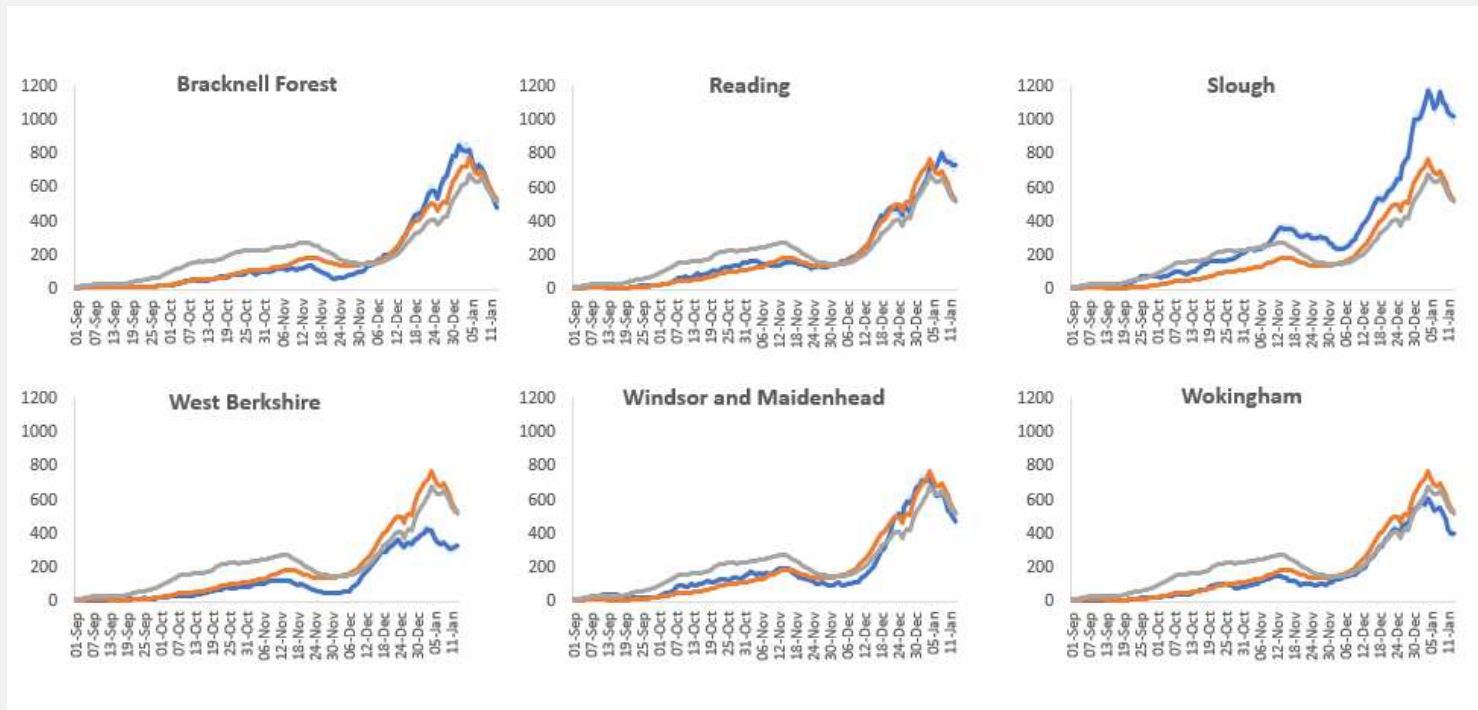
* Dates and figures refer to specimen date

Epidemiology update

3

Weekly rate of confirmed COVID-19 cases per 100,000 population (7-day rolling average)

Data from the most recent 4 days have been excluded from the charts as these will be incomplete



Epidemiology update

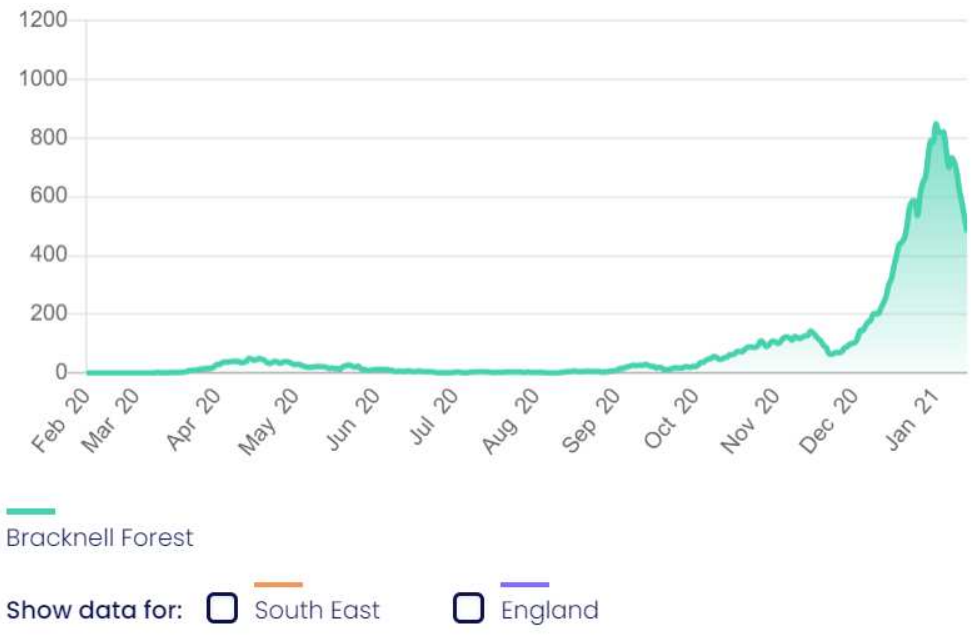


4

Weekly rate of confirmed cases per 100,000 population ⁱ

in Bracknell Forest (7-day rolling average)



Reported up to 13 Jan 2021



Community Lateral Flow Testing Programme

What are lateral flow tests?

- Lateral flow tests (LFTs) are conducted in the same way as a PCR test using a long 'cotton bud' to swab the tonsils and then to swab in the nostril(s)
- The test takes 20 to 30 minutes to produce a test result
- The test detects the viral load of COVID-19 present in the sample
- If the viral load is high enough, a positive result is obtained

-  Lateral flow tests provide a quick result that indicates whether or not someone without symptoms (asymptomatic) is carrying COVID-19 at an infectious level that could be transmitted to others without knowing it.
-  Identifying these asymptomatic cases and ensuring they isolate is a useful tool to break transmission chains and control the spread of COVID-19 in our communities.

Public Health Aims and Objectives

Aim

- To actively identify asymptomatic cases of COVID-19 and to reduce transmission in the event of an outbreak

Where will testing be targeted?

- Initial focus will be critical and key workers and anyone who is required to leave home for work or a crucial activity or for the management of local Covid-19 outbreaks.
- The Military have worked hard with Public Health and council colleagues to identify the target population groups by job sector and work to model and finalise this list is ongoing.

Schools Testing Programme – secondary schools and colleges

To safeguard the health of the teaching workforce and keep as many staff and pupils in school and college as possible, the government has introduced a testing programme for schools using rapid-result coronavirus tests.

The schools programme comprises two elements:

1

the school and college workforce to conduct weekly testing of staff

2

for students and pupils as well as the workforce to conduct daily testing for those identified as close contacts of workforce colleagues, students or pupils that have tested positive

For every group, testing is voluntary, but those who are eligible for tests are strongly encouraged to participate to reduce the risk of transmission within schools and colleges.

Schools Testing Programme – secondary schools and colleges

- As part of our ongoing response to COVID-19 the East Berkshire Health Protection Board provides oversight of the delivery of our Outbreak Control Plan. At last week's East Berkshire Health Protection Board.
- At last week's Health Protection Board meeting, the Board discussed the schools testing programme.
- In light of case numbers locally and the new variant of COVID-19, which is prevalent across Berkshire, the Board recommended that proceed only with weekly testing of staff for the purpose of case finding.
- We have advised our schools and colleges not to proceed with the second element of the programme; daily testing of those who have had contact with positive cases.
- Instead, all close contacts of positive cases should continue to be instructed to self-isolate for 10 full days after contact with a positive case.
- This decision will be kept under review by the East Berkshire Health Protection Board.

Schools Testing Programme – primary schools and nurseries

- Last week the government announced that the LFD testing programme will be rolled out to primary schools and nurseries from next week
- The programme for primary schools and nurseries is focused solely on regular testing to identify asymptomatic cases within the workforce
- Staff will conduct LFD tests at home, twice weekly and at least 3 to 4 days apart
 -
- Anyone who tests positive must self-isolate immediately and book a confirmatory PCR test
- There is no expectation that primary schools will conduct daily testing following a positive case in the setting

Any questions?

10