

# Bracknell Forest Council Outbreak Control Plan

30 June 2020

Agenda Item 4

# Contents

Item	Slide
Why do we need an Outbreak Plan for Bracknell Forest?	3
Local authority context	4
Outbreak Control Plan Themes	5
Managing risks locally	6
What actions might be taken or recommended?	7
How will we respond to an outbreak in Bracknell Forest?	8
Managing a local outbreak is a team effort	9
What happens if there are cases?	10
What if more action is needed?	11
When and how to get in touch	12
Communication with residents	13
Governance	14
Governance hierarchy	15
Next steps	16

2

2

# Why do we need an Outbreak Plan for Bracknell Forest?

- We want to keep our residents as safe as we can from Covid-19 until better treatments and/or a vaccine is available
- The initial phase of Covid-19 was countrywide. As national restrictions are lifted, sporadic cases are likely which will need local action to prevent spread
- Building on local knowledge and trusted partnerships our local plan adds to national programmes



# Local Authority Context

- Bracknell Forest encompasses 42.23 sq. miles of land within Thames Valley Berkshire with accessibility to network of clean, safe and attractive green spaces
- Estimated population of 122,549 49.7% male and 50.4% female
- Predominantly White British (90.6 %), with BAME communities make up 9.3%
- Health is better than the England average, and is one of the 20% least deprived areas of the country – ranked 287 out of 326 local authorities in England. Life expectancy for men (81.9) and women (84.9) is higher than England average
- 70,000 of the residents are economically active and the unemployment rate is one of the lowest in the country. Workless households between Jan to Dec 2018 represented 2,200 households
- 7.7% per cent of 0-15-year olds in the borough are living in poverty, compared to a South East rate of 10.6% and a national average of 14.7%
- 9.1% (2,045) of children live in low-income families and 6 out of 19 wards have free school meal eligibility of over 10%. This equates to a rate of 7.9% compared to 14.3% nationally
- The percentage of young people achieving a grade 4+ in both GCSE English and mathematics is 66.3% (2019), and a grade 5+ in both English and mathematics is 44.1% (2019)
- All victim-based crime in 2019/20 has increased by 6.9% compared to 2018/19
- NHS partners include the Frimley ICS, Frimley CCG Collaborative, local PCNs, Frimley Healthcare Foundation Trust with local sites at Wexham Park and Heatherwood and, Berkshire Healthcare Foundation Trust with community and mental health services

# Outbreak Control Plan Themes

<b>Care homes and schools</b>	Prevent and manage outbreaks in specific individual settings
<b>High risk places, locations and communities</b>	Prevent and manage outbreaks in other high-risk locations, workplaces and communities
<b>Local testing capacity</b>	Deploy local testing capacity optimally
<b>Contact tracing in complex settings</b>	Deliver contact tracing for complex settings and cohorts
<b>Data integration</b>	Access to the right local data to enable the other themes and prevent outbreaks
<b>Vulnerable people</b>	Support vulnerable people and ensure services meet the needs of diverse communities
<b>Communication and engagement</b>	Take local actions to contain outbreaks and communicate with the general public
<b>Additional themes have been agreed</b>	Including: keeping our workforce safe and communications and engagement to ensure that residents are well informed

# What actions might be taken or recommended?

- Enhanced monitoring of the health and welfare of people isolating
- Specific advice on personal protective equipment (PPE) and infection prevention and control measures
- Contact tracing



Alert messaging



Focused testing of people with and without symptoms



Special testing facilities set up



Closure of premises



Restricting visiting



Cancelling events



Closing playgrounds or other facilities

# Managing risks locally

- Covid-19 does not travel on its own. It is transmitted largely in droplets, coughed out by people who are infected
- Keeping a social distance, using tissues to catch coughs and sneezes and disposing of them safely, washing hands often and isolating infectious people are key protection measures to prevent spread
- Some people seem more likely to catch Covid-19 or to become more sick as a result. These people need extra protection
- Some settings are more risky, for example where infectious people are being cared for, where social distancing and isolation are more challenging or where there are people at particular risk of harm from Covid-19
- It is likely that Covid-19 will be harder to spot and control in the winter and we need to be prepared.
- In Bracknell Forest Council we are developing a focussed outbreak plan for these settings and population groups:

- |               |                       |                             |                                      |
|---------------|-----------------------|-----------------------------|--------------------------------------|
| 1. Nurseries  | 5. Family Hubs        | 9. Faith settings           | 13. Contracted leisure facilities    |
| 2. Schools    | 6. Children's Centres | 10. Military settings       | 14. Council owned leisure facilities |
| 3. Care Homes | 7. Hospices           | 11. Out of Hours provisions | 15. Open Learning Centre             |
| 4. College    | 8. Workplaces         | 12. Community Centres       | 16. Libraries                        |

# How will we respond to an outbreak in Bracknell Forest?

- We will watch data on cases and risks closely, so we spot outbreaks early
- We will support our residents to stay safe, encouraging handwashing, social distancing and isolation and assisting those who need help to comply
- The actions we take will be those most likely to be effective, based on evidence
- We will act swiftly to put local actions in place to support Public Health England's recommendations on controlling spread
- We will communicate with local people and organisations to help them keep safe



# Managing a local outbreak is a team effort



6

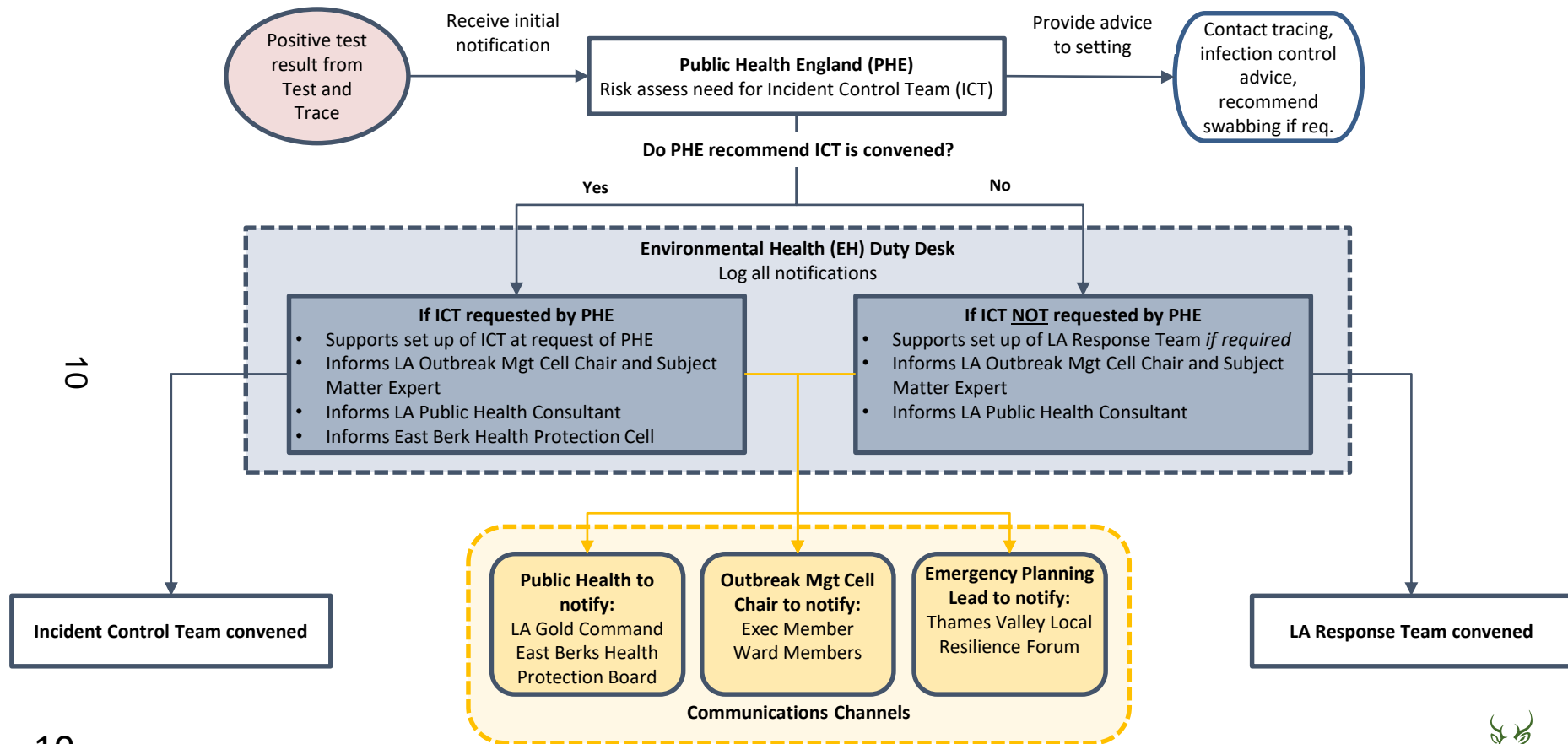
NHS Test & Trace

National Joint Biosecurity Centre

Thames Valley Local Resilience Forum

9

# What happens if there are cases?



# What if more action is needed?



## Local Resilience Forum

- Consider action if cases and outbreaks are cross border in Thames Valley with increasing rates of infection

## Berkshire East Health Protection Board

- Consider local interventions effectiveness
- Consider additional interventions needed
- Deployment of mobile testing units
- If requirement will implicate wide areas and therefore impact a number of services – activate Berkshire East Tactical Control Group

## Local Authority

- Consider interventions to be put in place & implement

## Local Outbreak Engagement Board

- Develop engagement activity and communications regarding interventions to be put in place

## Incident Control Team

- Outbreak numbers and/or complexity dictate the escalation of the incident

# When and how to get in touch

- If you are self-isolating or vulnerable and need help with shopping, medication delivery please contact the Community Response Team on 01344 266 911 or email [community@healthwatchbracknellforest.co.uk](mailto:community@healthwatchbracknellforest.co.uk)
- If you think someone has Covid-19 in your workplace, school or other setting please contact 01635 503242 or email [CV19notifications@westberks.gov.uk](mailto:CV19notifications@westberks.gov.uk)
- If you have Covid-19 symptoms, stay home and contact NHS [www.111.nhs.uk](http://www.111.nhs.uk) or ring 119
- Latest national guidance can be found here: [www.gov.uk/coronavirus](http://www.gov.uk/coronavirus)

12

12

# Communication with residents



Our Outbreak Engagement Board will be held in public every month and more often if needed, led by local Councillors accountable to the public



We will keep our website up to date with the latest information and guidance



We will use social media to spread the word



We will work with services, businesses and organisations to make sure information is clear and accurate



We will make information available in accessible formats and languages other than English

# Governance

## **East Berkshire Health Protection Board**

Oversee ongoing development and delivery of the Outbreak Control Plan

## **Bracknell Forest Council Outbreak Engagement Board**

Will listen and engage with communities to keep the public informed about Covid-19

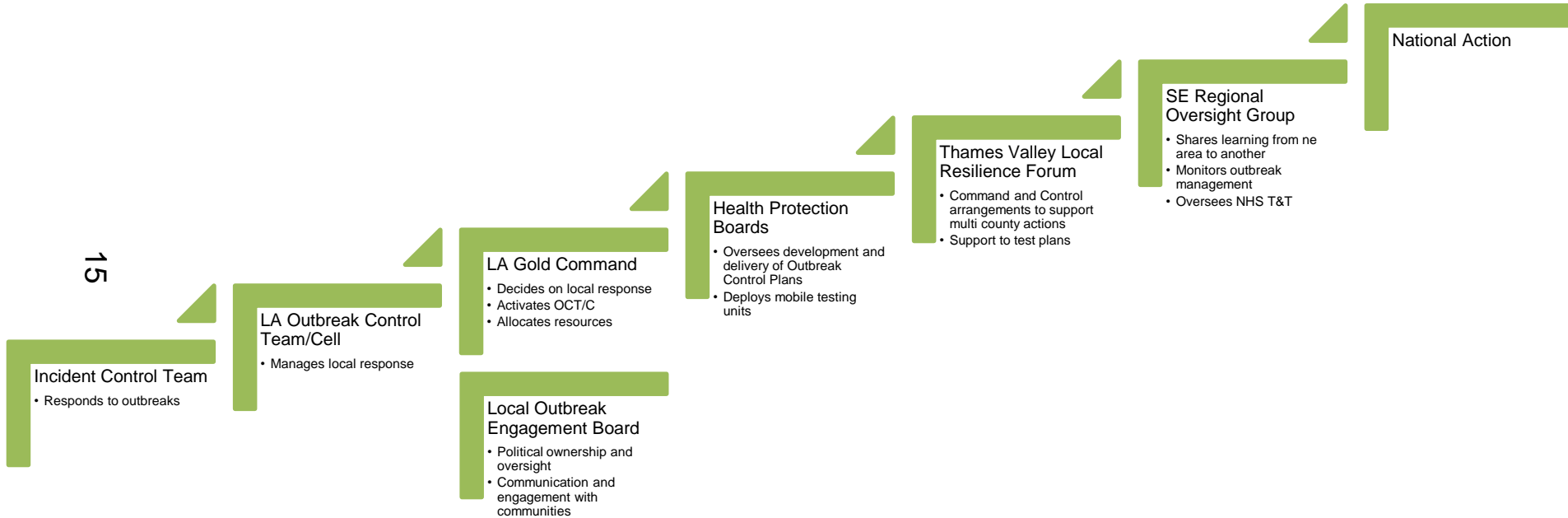
## **Thames Valley Local Resilience Forum**

Will put Command and Control arrangements in place to act across a broader geography if needed

## **SE Regional Oversight Group**

Will help us learn from other areas

# Governance hierarchy



15

# Next steps

1



2



3

16

## Refine

Refine the plan with partners

## Adapt

Adapt the plan as we learn more about Covid-19 and local outbreaks

## Review

Review our plans alongside new national programmes such as the Joint Biosecurity Centre