



OVERVIEW AND SCRUTINY COMMISSION

27JUNE 2019

SUPPLEMENTARY PAPERS

TO: ALL MEMBERS OF THE OVERVIEW AND SCRUTINY COMMISSION

The following papers were circulated at the above meeting.

Kevin Gibbs
Executive Director: Delivery

	Page No
7. CRIME AND DISORDER COMMITTEE	3 - 36
Meeting as the Crime and Disorder Committee, to receive presentations on, and to consider:	
A Crime Overview, Case Studies and Themed Project Work for 2018/19 as well as Community Safety Partnership Priorities for 2019/20.	
Local Police Area Commander Superintendent Felicity Parker and Alison O'Meara, Head of Community Safety's (Bracknell Forest Council) presentation attached.	

This page is intentionally left blank

Bracknell Forest Community Safety Partnership (CSP)



2018/19

Timothy Wheadon
Chair of the CSP and
Chief Executive of BFC

Supt. Felicity Parker
Vice-Chair of the CSP and
Bracknell and Wokingham
Local Police Area Commander
Thames Valley Police

Alison O'Meara
Head of Community Safety, BFC

Format

1. Function and Role of the CSP
2. Crime Overview - 2018/19
3. Problem-Solving - 2018/19
4. Themed Project Work - 2018/19
5. Priorities - 2019/20

1.

Function and Role of the CSP

Legislative Framework of CSPs

- Statutory partnerships laid down in terms of the Crime and Disorder Act 1998
- CSPs are required to:
 - conduct an annual assessment of crime, anti-social behaviour and substance misuse
 - publish a 3-year plan (updated annually) of how it intends to make the community safer

9

CSP Meetings and Representation

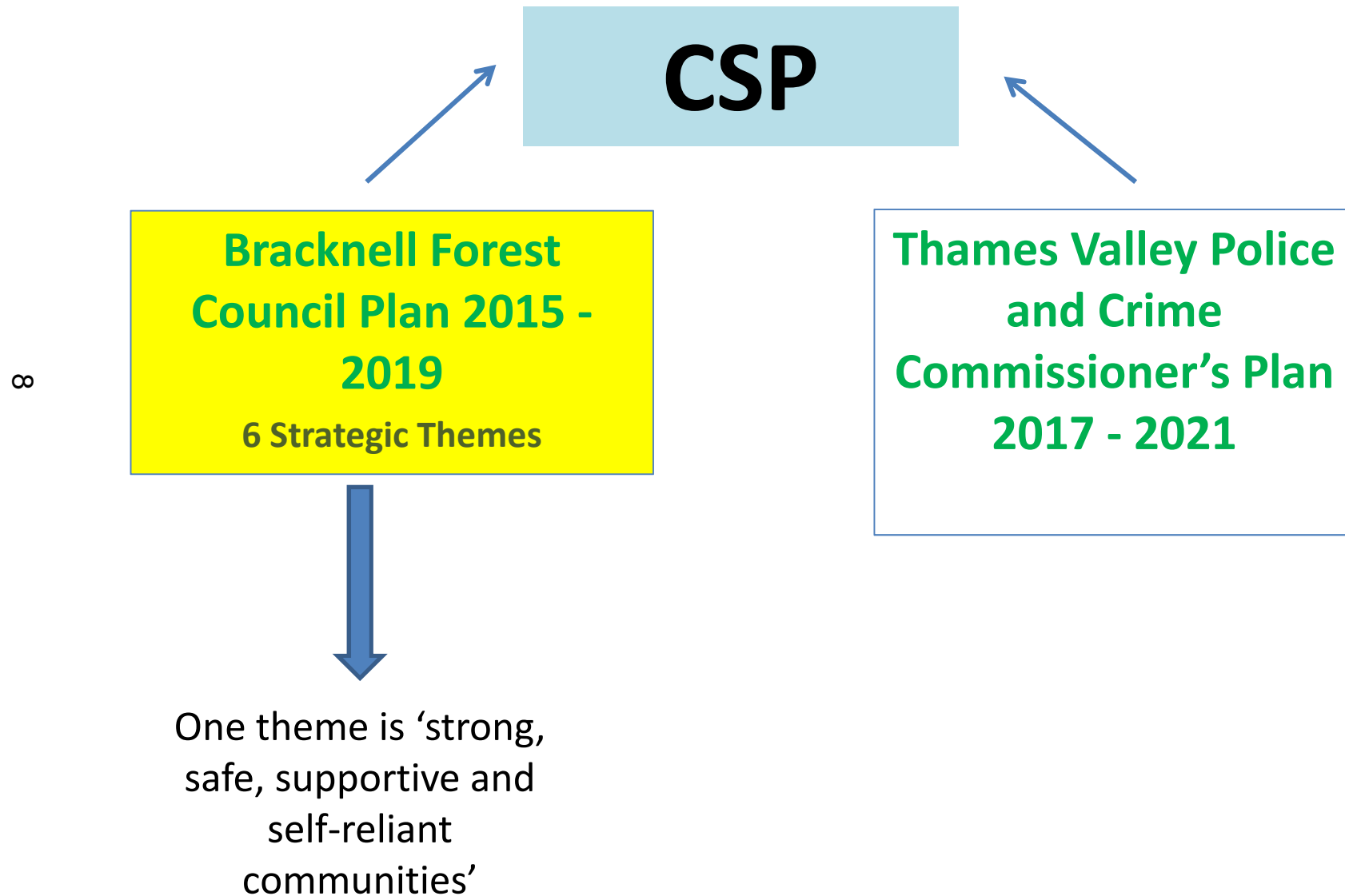
- CSP Steering Group meets 4 times a year
- CSP Forum/Workshop meets 2-3 times a year
- Chaired by the Chief Executive of BFC
- Vice-Chaired by the Local Police Area Commander
- Delivery groups are in place/set up which are dependent on the CSP priorities

7

Statutory Members:

- Local authority
- Police
- Fire
- Clinical Commissioning Group (CCG)
- National Probation Service/Community Rehabilitation Company

How does the CSP link into the Council Plan and the PCC's Plan?



Resources 2019/20

Funding:

- Community Safety Fund (Police and Crime Commissioner): £136,091
- Domestic Abuse (Bracknell Forest Council): £54,390
- Community Safety Team (Bracknell Forest Council): £167,080

6

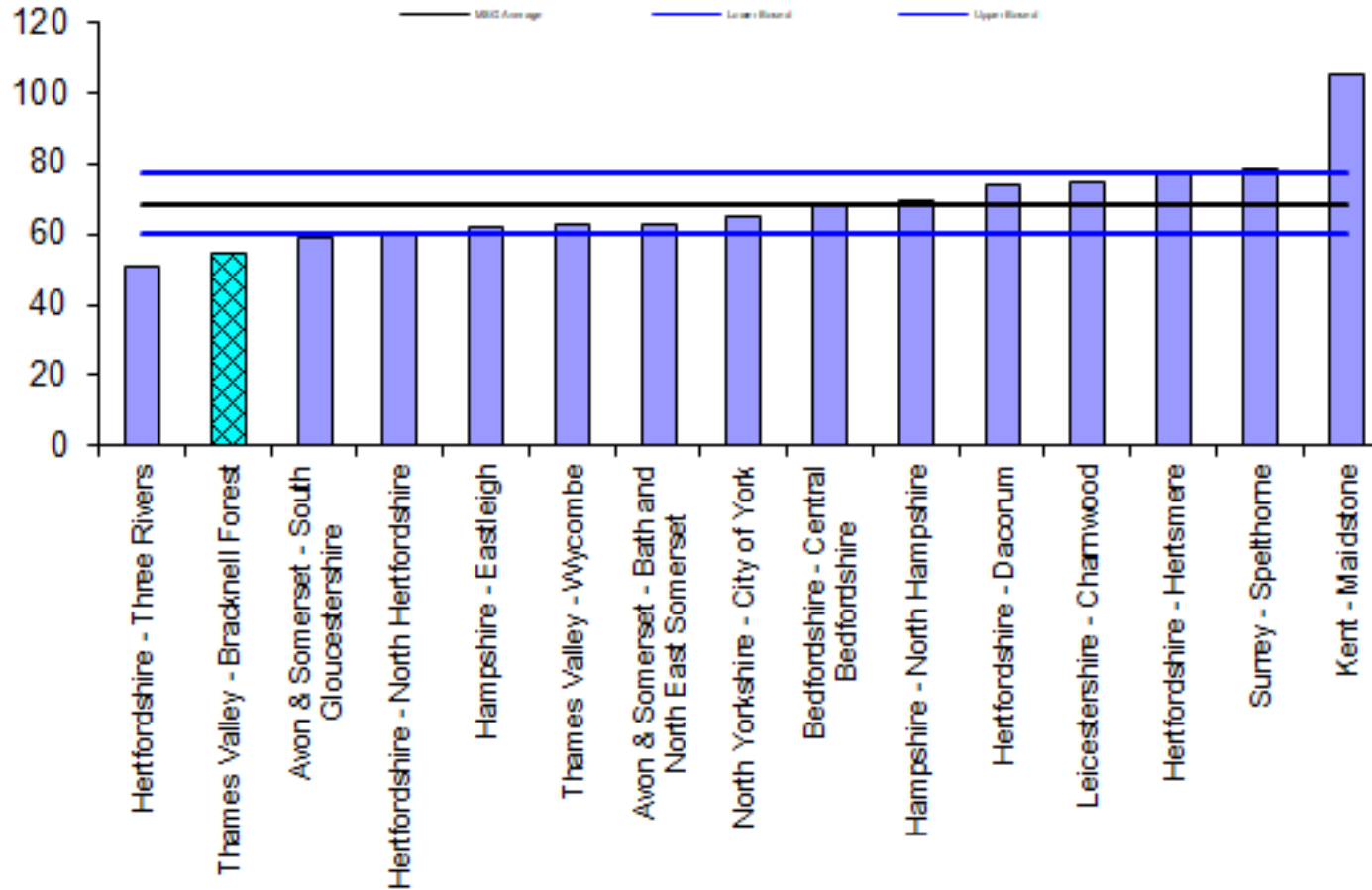
Community Safety Team:

- 3 full-time posts - Head of Community Safety, Community Safety Officer, Enhanced Offender Manager
- 3 part-time posts - Crime and ASB Analyst (0.54), Domestic Abuse Co-ordinator (0.3), Community Safety Project Officer (0.4)

2.

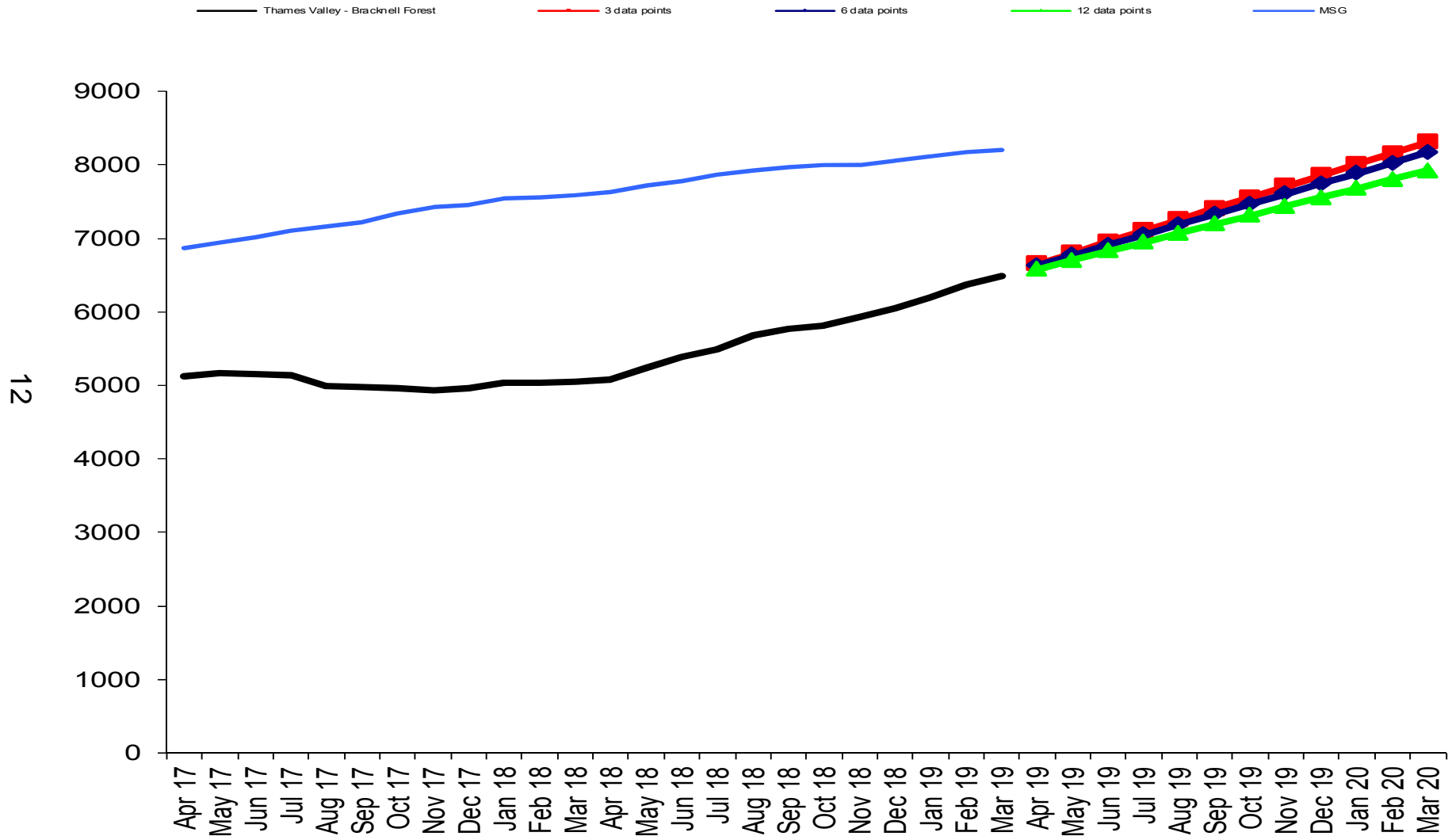
Crime Overview - 2018/19

**iQuanta Bar Chart MSG (12 months) - Crimes per 1000 Residents
Thames Valley - Bracknell Forest
Crimes
01 Apr 2018 - 31 Mar 2019**



OFFICIAL SENSITIVE - Provisional data before it is finalised and published by the Office for National Statistics

iQuanta Projection Chart - Rolling 12 Month Crimes Thames Valley - Bracknell Forest Crimes 01 Apr 2017 - 31 Mar 2019

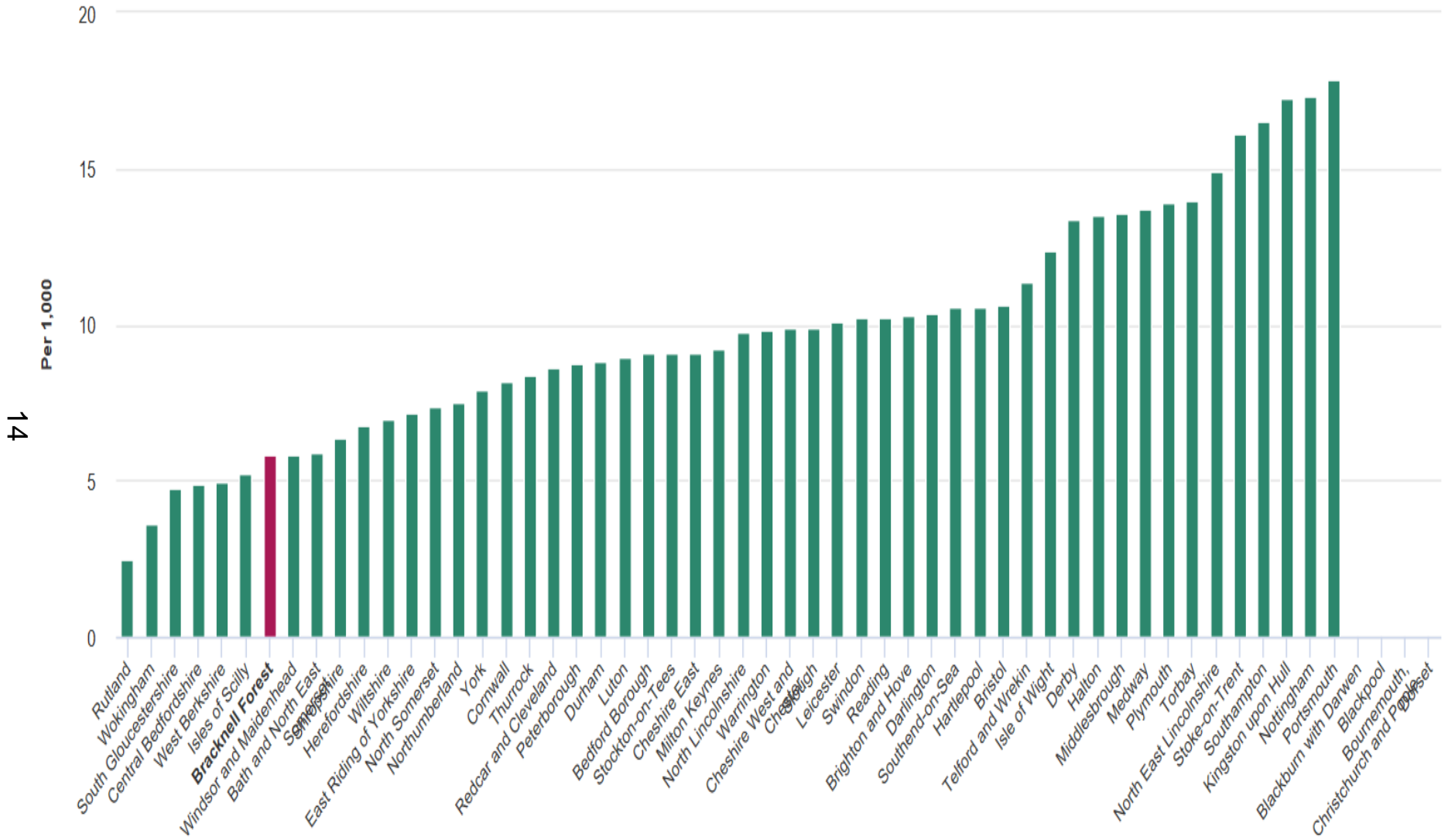


Performance against Key Priorities

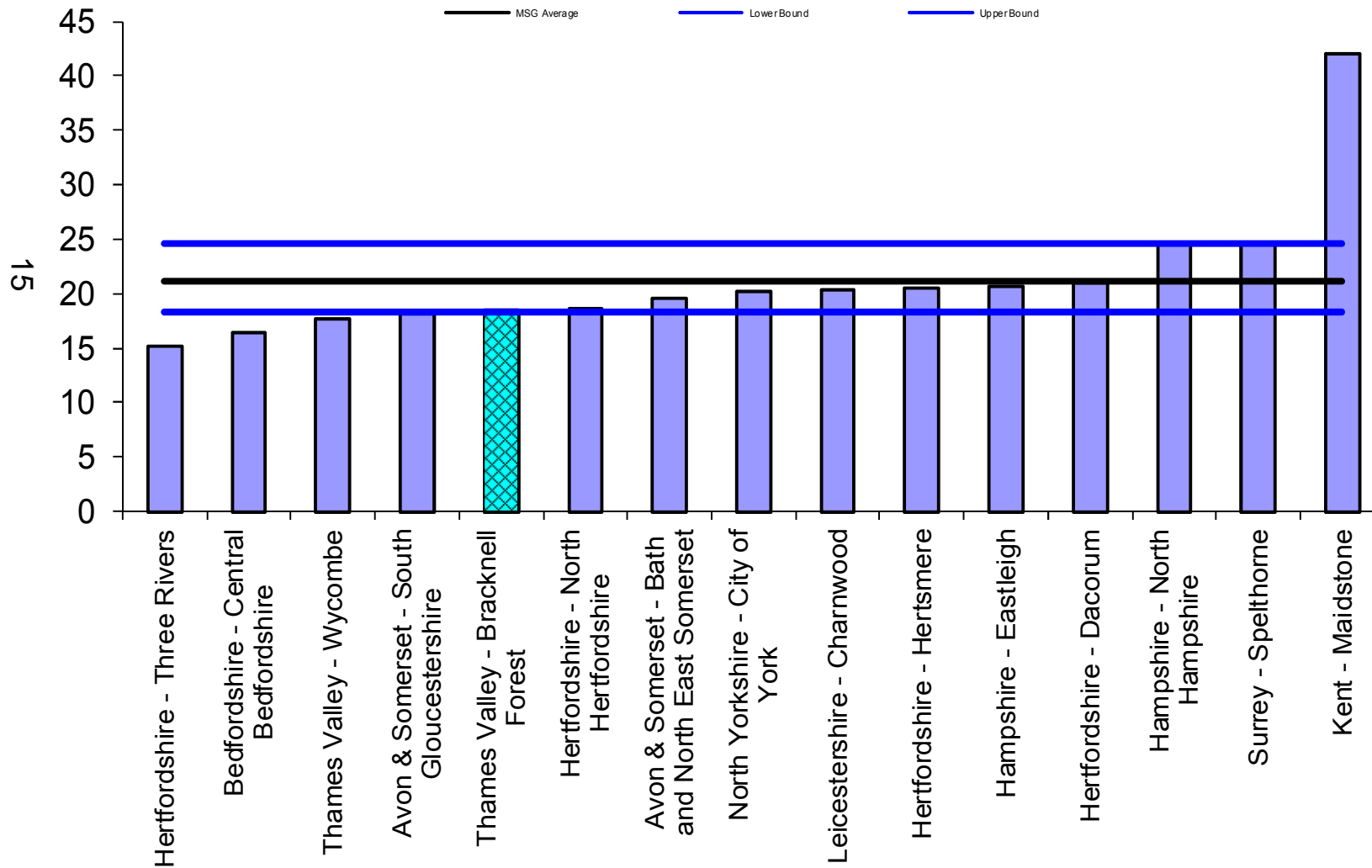
Violence against the Person	2017/18	2018/19
Bracknell Forest	1,449	2,220 (+53%)
Berkshire	13,570	19,272 (+42%)
Thames Valley	34,570	48,356 (+40%)

13

Crime - Violence against the person - with injury for Bracknell Forest & All English unitary authorities for year ending 2018 Q4 (12 months ending)



iQuanta Bar Chart MSG (12 months) - Crimes per 1000 Residents
Thames Valley - Bracknell Forest
Violence against the person (ONS)
01 Apr 2018 - 31 Mar 2019

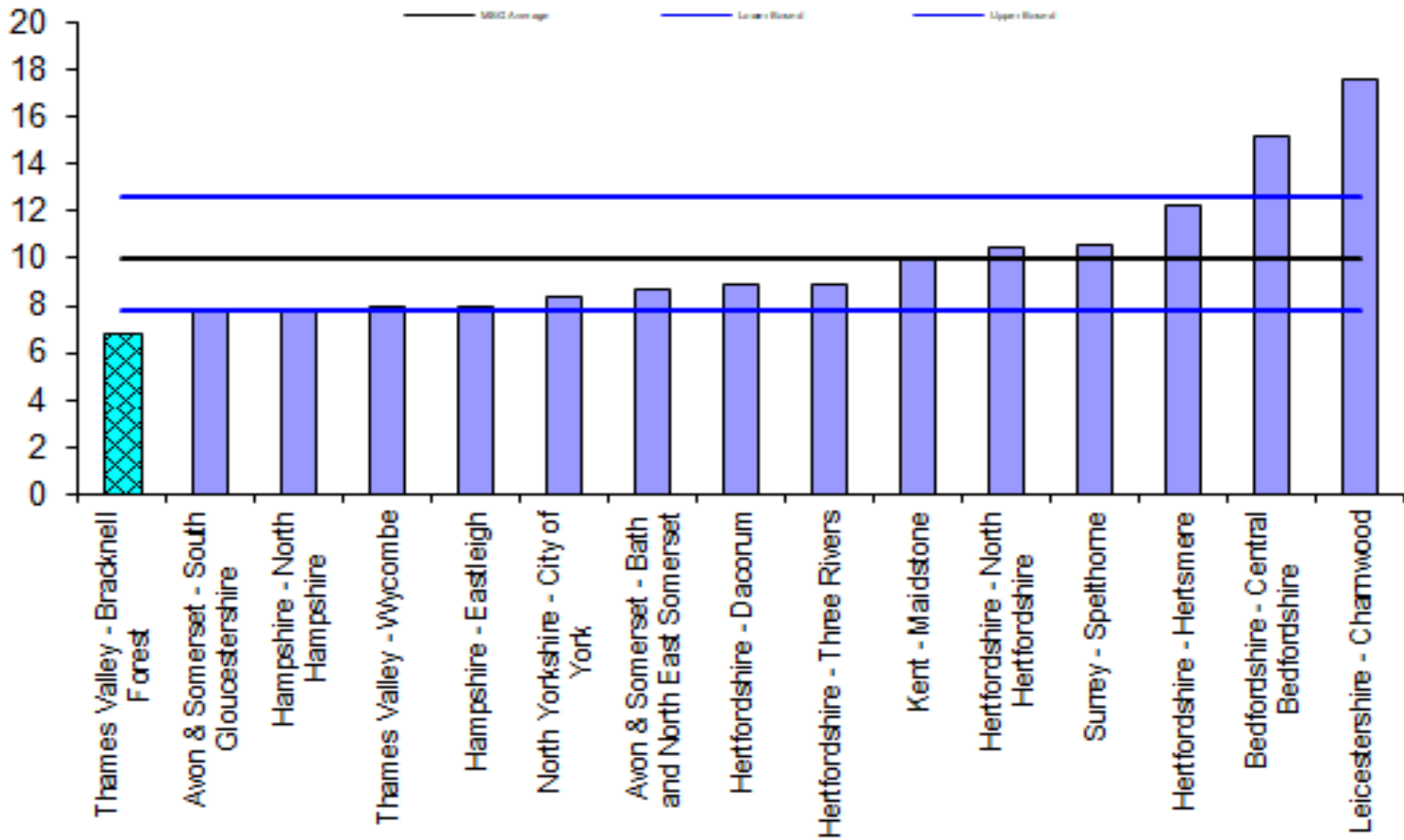


Performance against Key Priorities

Residential Burglary - Dwellings	2017/18	2018/19
Bracknell Forest	171	211 (+23%)
Berkshire	2,172	2,300 (+6%)
Thames Valley	5,672	5,568 (-2%)

16

iQuanta Bar Chart MSG (12 months) - Crimes per 1000 Households
Thames Valley - Bracknell Forest
Burglary - residential
01 Apr 2018 - 31 Mar 2019

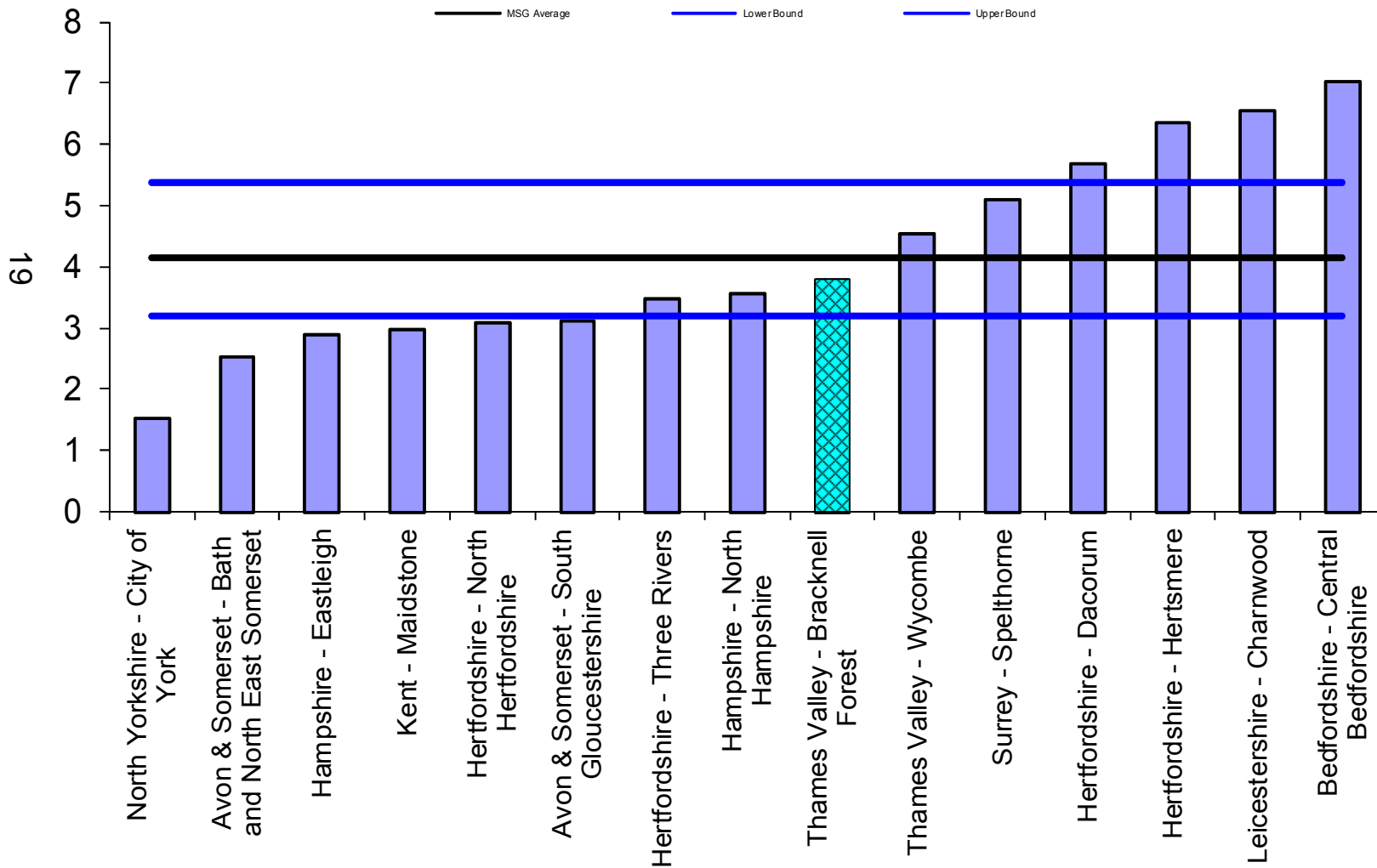


Performance against Key Priorities

Theft from Motor Vehicle	2017/18	2018/19
Bracknell Forest	309	456 (+48%)
Berkshire	4,479	5,061 (+13%)
Thames Valley	10,873	12,265 (+13%)

18

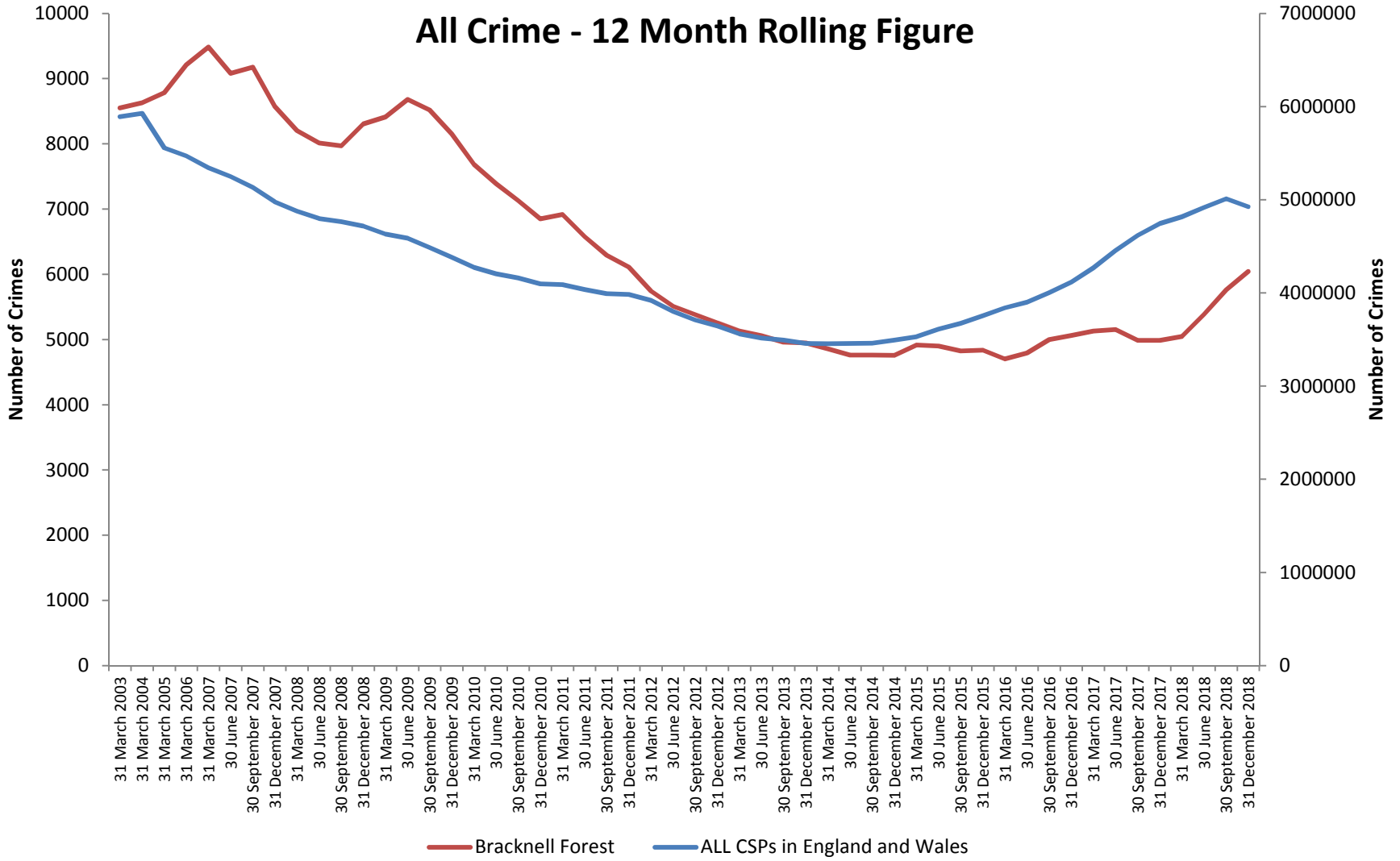
iQuanta Bar Chart MSG (12 months) - Crimes per 1000 Residents
Thames Valley - Bracknell Forest
Theft from a vehicle
01 Apr 2018 - 31 Mar 2019



Performance against Key Priorities

Town Centre	2017/18	2018/19
Public Order	37	39 (+5%)
Criminal Damage	52	29 (-44%)
Shoplifting	180	280 (+56%)

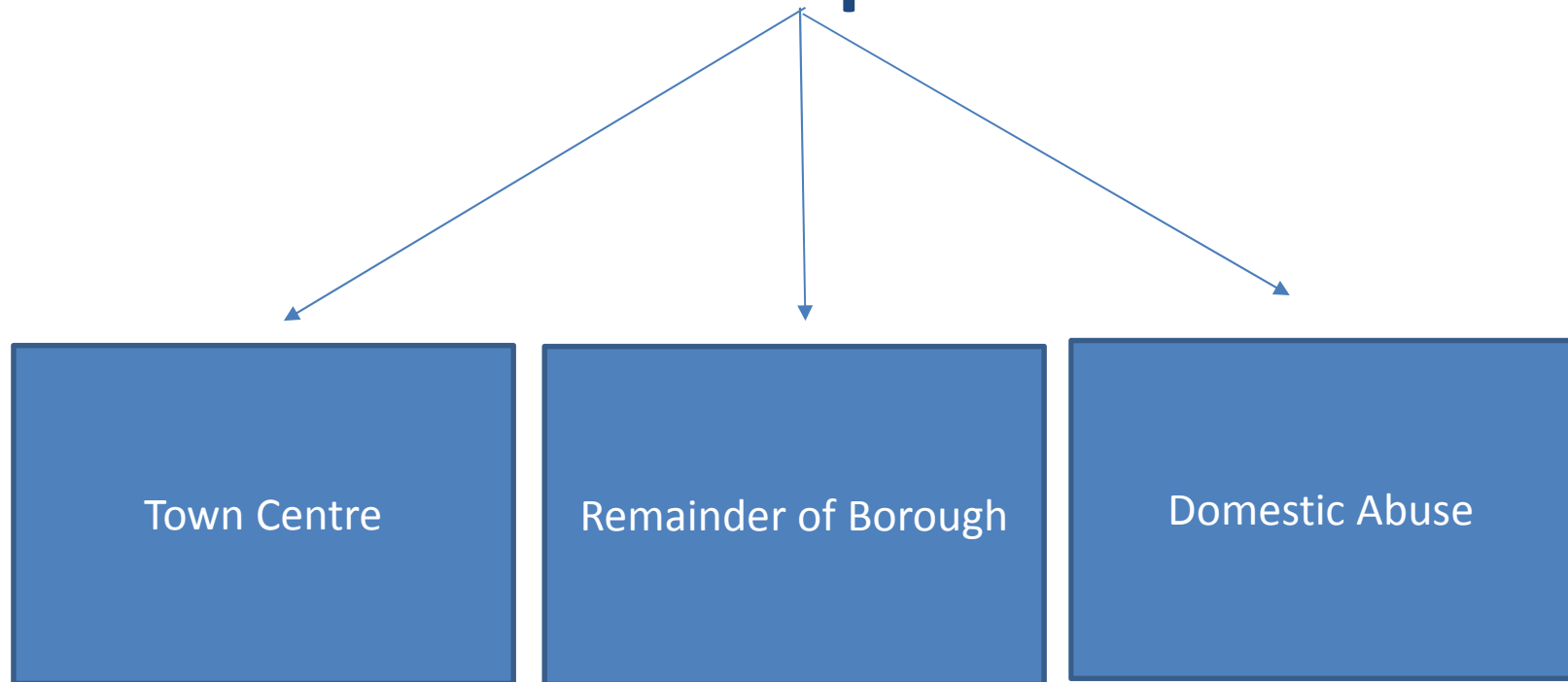
20



3.

Problem-Solving - 2018/19

Partnership Problem-Solving Groups



23

58 cases closed in 2018/19

Town Centre Anti-Social Behaviour

Issue:

Regular gathering of street drinkers and drug users in Jubilee Gardens

Actions:

- New Hope outreach
- Clearing of vegetation
- CCTV replaced
- Criminal Behaviour Order issued
- Work with retailers
- Public Space Protection Order powers
- Police patrols increased

Outcome:

- Complaints of street drinking has substantially reduced

Child Exploitation

Issue:

Child A targeted by 2 gangs

Actions:

- Disclosure made to teacher
- Reported to Police and Children's Social Care
- Child A and his family moved out of area temporarily

Outcomes:

Child A started to engage in sport and also developed a good relationship with the neighbourhood police team

Domestic Abuse

Issue:

T arrived in Bracknell with her family and disclosed various types of abuse from her husband

Actions:

- Risk assessment completed
- MARAC referral and safety planning
- Husband arrested
- BWA advocated for T
- Helped to access Slough Immigration Aid, food vouchers and toys

Outcome:

T and her child moved into a specialist refuge where staff could support with their needs

3.

**Themed Project Work -
2018/19**

Modern Slavery and Exploitation

Someone is in slavery if they are:

- forced to work through mental or physical threat
- owned or controlled by an 'employer', usually through mental or physical abuse or the threat of abuse
- dehumanised, treated as a commodity or bought and sold as 'property'
- physically constrained or have restrictions placed on his/her freedom

Modern Slavery and Exploitation

- Z is looking for labouring work in the UK
- W offers Z a job on a construction site including accommodation, transport and pay
- On arrival, Z finds that:
 - Poor accommodation
 - Working hours
 - Freedom of movement
 - Criminal exploitation

Modern Slavery and Exploitation

- Sub-group of the CSP set up in 2018
- Action Plan drawn up
- Training of over 300 BFC practitioners and partners
- Victims First – Willow Project
- BFC and police are First Responders
- Modern Slavery Supply Statements
- Public awareness-raising

30

IF YOU THINK SOMEONE MAY BE A VICTIM OF MODERN SLAVERY
CALL THE 24/7 MODERN SLAVERY HELPLINE ON

08000 121 700

WORKING TOWARDS
A WORLD WITHOUT SLAVERY

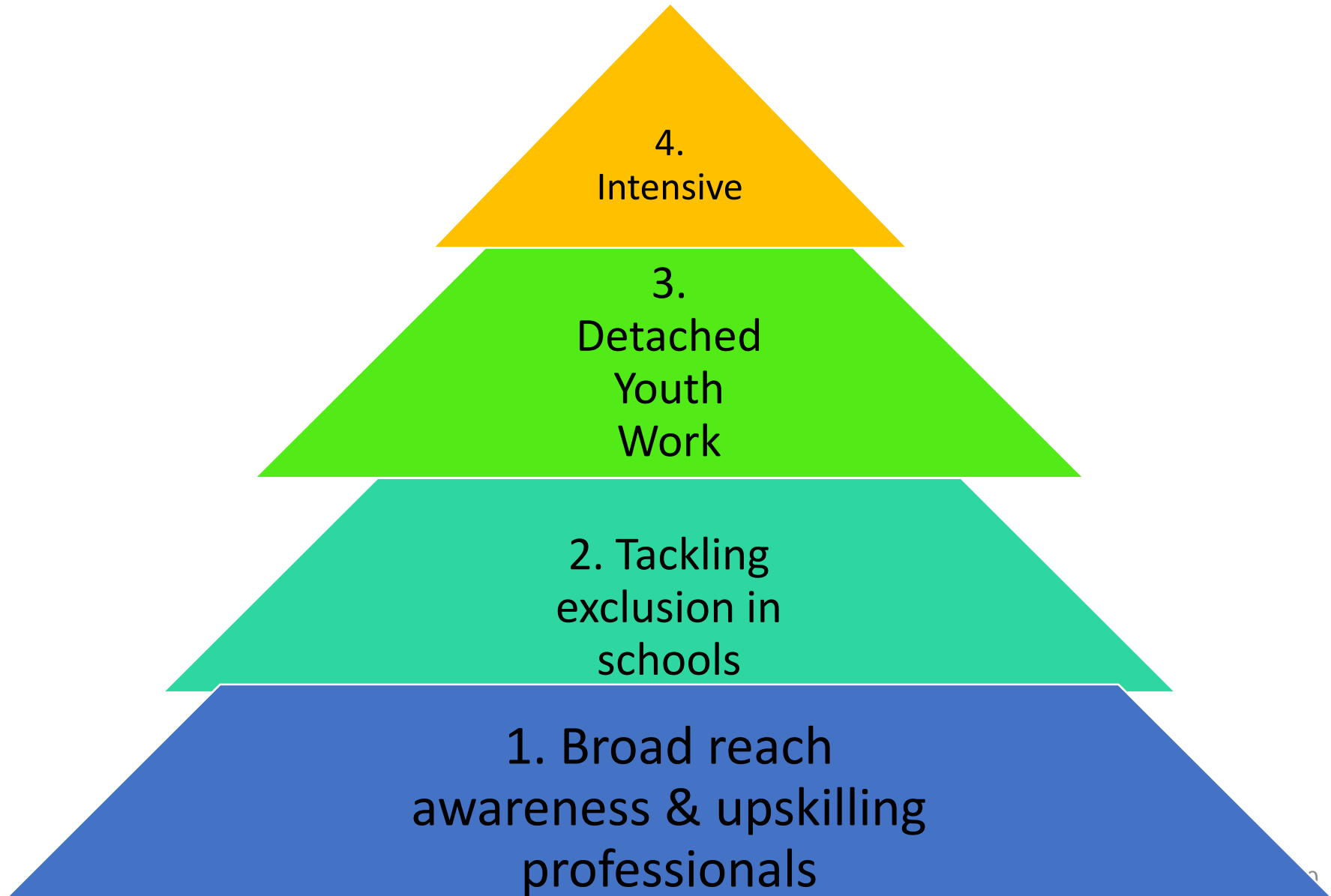


County Lines

- Exploitation Prevention Team
- MACE and Makesafe
- Stronghold
- Awareness-raising
- Early Intervention Youth Fund (EIYF)



Early Intervention Youth Fund



Early Intervention Youth Fund

- Tier 1 (a):** County Lines Secondary School Theatre Tour (Nov 19)
- Tier 1(b):** Workshops for Young People (Secondary Schools) (TBC)
- Tier 1(c):** Professionals Training: Gang Awareness (Oct, Nov 19)
- Tier 2:** Tackling Exclusion in Schools (TBC)
- Tier 3:** Street-based Youth Work (TBC)
- Tier 4:** Intensive Support: Young People at Risk or Already Involved in Gangs/Knife Crime (TBC)

4.

Priorities - 2019/20

2019/20 CSP Priorities

County Drug Lines and Exploitation
Violence and Knife Crime
Hot Spots of Crime and ASB as Identified by the
Community
Domestic Abuse
Sexual Crimes
Residential Burglary
Theft of Tools from Vans
Hate Crime
Supporting People with Mental Health Issues
Low Level ASB
Other Vehicle Crime

Conclusion