

Adult Services Transformation Update



Adult Social Care Health and Housing Overview & Scrutiny Panel

26 March 2019

Sarah Kingston
Transformation Programme Manager – Adults

Agenda

1. What are we trying to achieve?
2. What we've delivered over the last year
3. Aligning & Prioritising
4. Transformation Cycle
5. Current programme
6. Project summaries
7. What's next for the programme?

What are we trying to achieve?

To align with the Council's strategic priorities the plan for adults transformation was developed to deliver:



Strong, safe, supportive & self-reliant communities



Value for money



What are we trying to achieve?

To align with the Council's strategic priorities the plan for adults transformation was developed to deliver:



Strong, safe, supportive & self-reliant communities



Value for money



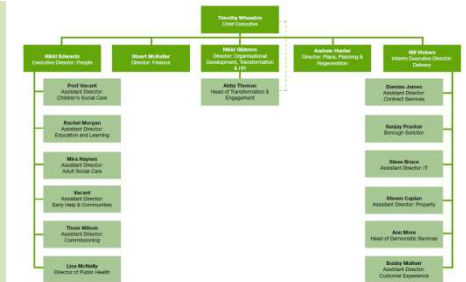
People are well informed & able to manage their own health and care to stay well, safe & connected to their families & friends, leading independent, happy lives in their communities

What we've delivered over the last year

- ✓ Conversations approach new way of working
- ✓ More transparent assessment and care calculator tools
- ✓ Extra dementia care and step-up/ step-down beds
- ✓ Online marketplace launched
- ✓ New outcomes focused home care contract
- ✓ Connections hub function and community connector role set up
- ✓ Personal Health Budget service operational
- ✓ Care management system upgrade and mobile IT kit
- ✓ 43% of people now manage their care via direct payments

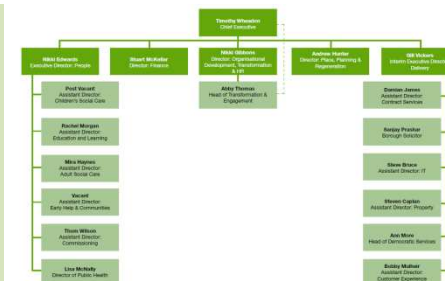
Aligning to form the People Directorate

Due to organisational changes – including the formation of the People Directorate - it was a good time to take stock and consider the best way forward and give the programme the best chance of success.



Aligning to form the People Directorate

Due to organisational changes – including the formation of the People Directorate - it was a good time to take stock and consider the best way forward and give the programme the best chance of success.



Bracknell Forest People Directorate Vision

People at the Heart of our Services

We are here to:

- Protect you from harm if you need us
- Help you to get support so that you can be physically and emotionally healthy
- Work with you and your community to help you to be independent and resilient



We'll do this by:

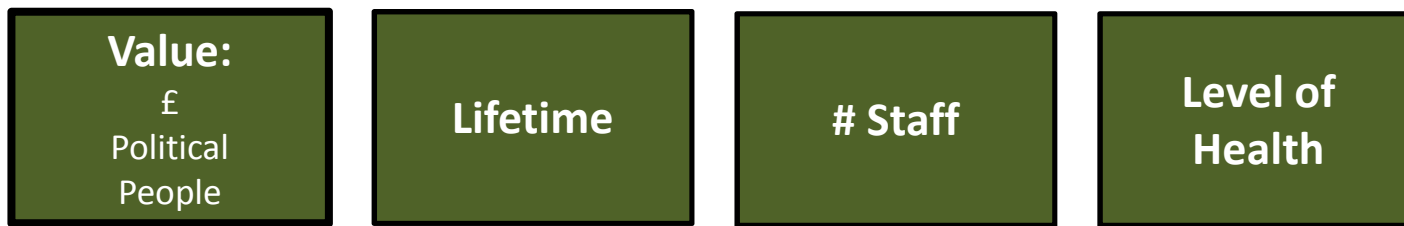
- Focusing on quality practice
- Integrating services with partners
- Providing information & choice
- Focusing on what is most important

Prioritising Transformation

We have stretched resources and previously we were managing too many projects across the Council all at one time, making progress slow.

CMT therefore carried out a prioritisation exercise across the whole of transformation to alleviate this.

We are using a portfolio methodology based on value, lifetime, resourcing and health to prioritise our projects moving forward.



The Transformation Cycle

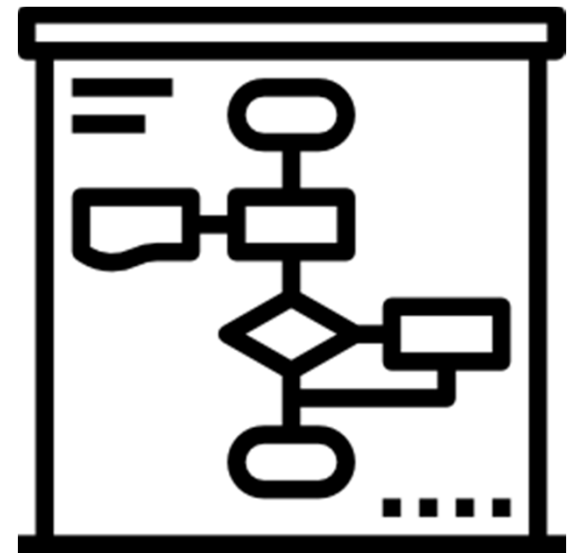


Most of the initiatives within the programme are in the early Analyse phase as we need to ascertain whether there is a need for the project and what value it would bring for the residents and for the council.

Current Programme

CMT Prioritised 9 Projects within the adults programme to be taken forward:

1. Resource Management
2. Section 117 Reviews
3. Earlier Intervention – Mental Health
4. Residential Affordability
5. Discharge to Assess in Extra Care
6. Bridgewell
7. Independence Programme
8. EDS and Forestcare Service Review
9. Heathlands



Resource Management

What will it achieve?



- Ensuring that practice is Care Act compliant by review of processes, IT updates and guidance notes for practitioners
- Making savings through the creation of robust processes and procedures to ensure the right level of support is provided and case reviews are conducted appropriately
- Expected completion May 2019

Why is it important?



- It is an essential requirement to comply with the Care Act when assessing the needs of adults and their carers, the implications of non-compliance could be severe.

Current Stage:

IMPLEMENT

Section 117 Reviews

What will it achieve?



- Project will ensure that costs for clients ongoing care is funded 50/50 between local authority and CCG which has previously not been the case.
- Expected completion May 2019

Why is it important?



- Reduction in ongoing revenue costs for ongoing care with no impact on clients.

Current Stage:

IMPLEMENT

Independence Programme – Community Provision and Respite

What will it achieve?



- Creation of a full business case and options appraisal for provision of day and overnight respite for learning disability (LD) clients
- Long term aim to achieve revenue savings and cost avoidance by delivering a programme of daytime group support and increased overnight respite capacity for LD clients and their families.
- If successful support costs will reduce, risk of breakdown will reduce and outcomes will improve.

Why is it important?



- Current provision may not be sufficient to meet the growing demand and more complex client needs.
- The project will provide more support to maintain care in the family home and prevent breakdowns which result in costly supported living or residential placements.

Current Stage:

ANALYSE

Earlier Intervention – Mental Health

What will it achieve?



- Provision of additional support when identified as required by practitioners to prevent breakdowns with care at home and prevent unnecessary moves into residential care

Why is it important?



- Being able to support clients for longer in a home environment is financially beneficial but it also promotes independence and a better quality of life.

Current Stage:

ANALYSE

Residential affordability - Mental Health

What will it achieve?



- The project will look to deliver a reduction in bed prices for nursing and residential placements, firstly focussing on older adults with mental health conditions.

Why is it important?



- A reduction in costs or prevention of rising costs for placements with no impact on the clients.

Current Stage:

ANALYSE

Discharge to Assess in Extra Care

What will it achieve?



- The project aims for more people to return home as opposed to entering residential care after hospital stays by assessing their needs in an extra care environment which is part way between being at home and in residential care
- We will look to explore options for providing extra care facilities for a small number of discharge to assess clients to demonstrate value of discharge to assess in an extra care environment

Why is it important?



- Discharge to Assess in Extra Care Housing allows those recovering from hospital treatment to have their needs assessed away from the hospital and in an environment where they are more likely to return home and not enter residential care so as to maintain independence.

Current Stage:

ANALYSE

What will it achieve?



- Considering the current and future demand for accommodation to meet the needs of ageing learning disability clients
- Sourcing of suitable accommodation that can be adapted to meet the needs and cater for the level of demand

Why is it important?



- There are a number of ageing LD clients who are currently housed in accommodation that cannot be adapted as they age meaning that alternative suitable accommodation will need to be sought

Current Stage:

ANALYSE

EDS and Forestcare Service Review

What will it achieve?



- Review the current delivery of the Emergency Duty Service (EDS) and Forestcare to understand the current situation and explore options for future delivery models that will meet the needs of Bracknell Forest

Why is it important?



- EDS is a statutory service and the current model provides an out of hours service pan Berkshire
- Forestcare is a discretionary service that provides the council's Emergency Response Telecare Control Centre

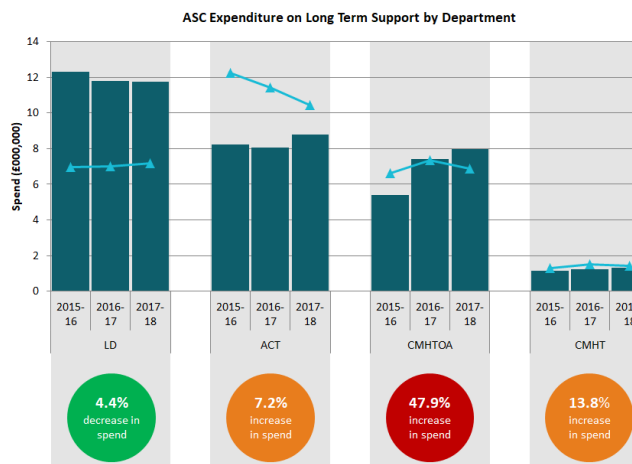
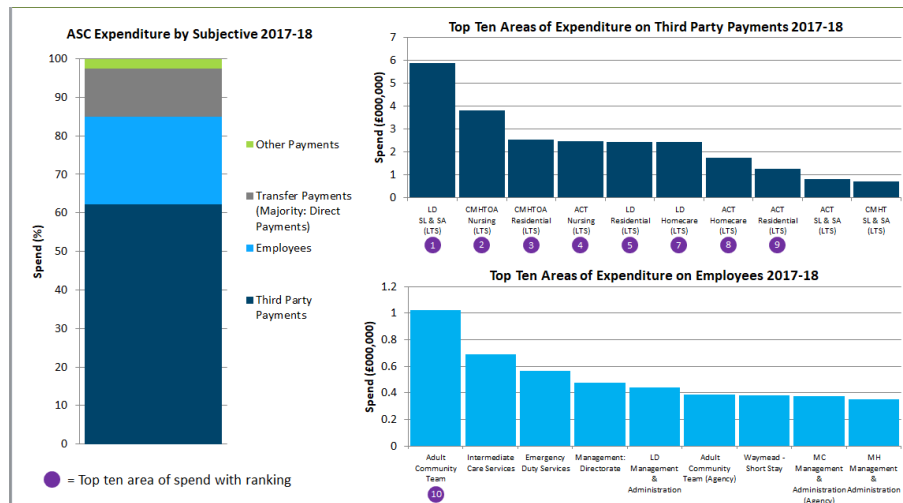
Current Stage:

ANALYSE

What's next for the programme?



- Given that the majority of the projects are in the early analyse phase, we are working to understand the need and how best we can meet that need
- We are also looking for opportunities for new projects by carrying out data analysis to understand how our total spend is made up and how it is changing
- As well as looking to make financial efficiencies it is important that we look to improve outcomes for those we care for
- We will ensure that all workstreams embody the principles of quality and consistency



Thank you



Questions