

Bracknell Forest Local Safeguarding Children Board  
**Annual Report 2007 - 08**



[www.bracknell-forest.gov.uk](http://www.bracknell-forest.gov.uk)

# Bracknell Forest LSCB Annual Report 2007-08

Document name & file location	S:\Ch & Fm\Chris Mills\LSCB		
Document Author	Chris Mills Policy & Commissioning Officer, Children's Social Care Bracknell Forest Borough Council Time Square, Market Street, Bracknell, Berkshire RG12 1JD Telephone: 01344 351767 Email: <a href="mailto:chris.mills@bracknell-forest.gov.uk">chris.mills@bracknell-forest.gov.uk</a>		
Document Owner	Director of Social Care and Learning, Bracknell Forest Borough Council Chair of Bracknell Forest Local Safeguarding Children Board (LSCB) Seymour House Bracknell, Berkshire RG12 1AU		
Review date	This document is to be reviewed annually		
Accessibility	This document can be made available in hard and electronic formats. No copies in other languages are currently available.		
Version	Detail of change	Name & Date	
How this document was created	Version 1	Author/Line Manager	Chris Mills/Penny Reuter August 2008
	Version 2	LSCB Executive	10 September 2008
	Version 3	LSCB	26 September 2008
	Version 4	Public document or Pre-print Design Circulation	
Circulation restrictions	Public Policy Document at Version 4.0		

## **Accessibility**

This document can be made available in large print, Braille, audio or in electronic format.

Copies in alternative languages may also be obtained.

Please contact:

The Policy and Commissioning Officer

Children's Social Care

Bracknell Forest Council

Time Square

Market Street

Bracknell

Berkshire RG12 1JD

Email: [Chris.Mills@bracknell-forest.gov.uk](mailto:Chris.Mills@bracknell-forest.gov.uk)

Telephone: 01344 351767

Fax: 01344 351521

Minicom: 01344 352045

## Table of Contents

1	Introduction .....	6
2	The LSCB.....	6
3	Main Achievements .....	6
3.1	Joint Area Review .....	6
3.2	Business Manager.....	7
3.3	LSCB Conference .....	7
3.4	Raising Awareness Sub Group .....	7
3.5	Webpage .....	8
3.6	The Safeguarding Toolkit .....	8
3.7	Multi-Agency Training.....	8
3.8	Safer Workforce Practice .....	9
3.9	Anti-Bullying .....	9
3.10	Safeguarding Children and Young People from Sexual Exploitation .....	10
3.11	Child Death Review Group.....	10
3.12	Protection Planning.....	10
3.13	Private Fostering .....	10
3.14	Licensing and Gambling .....	10
3.15	Links to other 'Themed Partnerships' .....	11
4	Child Protection Performance Report.....	11
4.1	Reporting methods .....	11
4.2	National Performance Assessment Framework (PAF) indicators.....	11
4.3	Numbers of Children subject to Child Protection Plans.....	12
4.4	New Protection Plans/Cessation of Child Protection Plans .....	13
4.5	Children subject to Protection Plans by Category of Abuse.....	13
4.6	Duration of Child Protection Plans .....	15
4.7	Sibling Groups .....	16
4.8	Ethnicity of Children with Child Protection Plans.....	16
4.9	Age and Gender information .....	16
4.10	Child Protection Case Conference Activity .....	16
4.11	Referral Numbers and Assessments undertaken .....	16
5	Multi-Agency Performance Management .....	16

6	LSCB Sub Groups.....	17
6.1	The LSCB Executive Committee .....	17
6.2	Serious Case Review Group.....	17
6.3	Quality Standards and Case Review Group.....	17
6.4	Policy and Procedure.....	17
6.5	Training.....	17
6.6	Child Prostitution Monitoring and Review Group.....	18
6.7	Anti-Bullying Group.....	18
6.8	Raising Awareness.....	18
6.9	Child Death Overview Panel .....	18
7	Future Priorities.....	18
7.1	LSCB Business Plan.....	18
7.2	Business Planning Priorities 2008 -10.....	18
7.3	LSCB Business Plan Review.....	19
7.4	Appendix: LSCB Income and Expenditure 2007/08 .....	1

## 1 Introduction

This has been a productive second year for the Local Safeguarding Children Board. The annual report can again point to clear achievements in working to safeguard and improve the wellbeing of the children and young people of Bracknell Forest. We have also taken important steps to increase local awareness of the Board's work through our annual conference and the continuing development of our own LSCB web page and publications.

## 2 The LSCB

The LSCB was established in April 2006 and is chaired by the Director of Children's Services. This ensures that the Council takes ownership of the work of the LSCB as a clear priority.

Representation on the LSCB brings together a wide range of people working in child welfare, including senior officers from the local police, medical, probation, education and children's social care services and representatives from the voluntary sector. The LSCB partnership agreement<sup>1</sup> commits member agencies to the safeguarding standards required by the LSCB.

The LSCB partnership agreement includes a commitment to:

- Membership of the LSCB at a level that can agree the necessary resources for its operation,
- Ensuring staff competence and robust, safe, recruitment,
- Delivering appropriate training and support of staff in relation to safeguarding practice,
- Ensuring clarity of accountability for the welfare of those children affected by the work of the agency concerned,
- Ensuring adherence and commitment to standards of equality, opportunity and diversity,
- Effective information sharing about children at risk,
- The use of clear written procedures for responding to allegations against staff,
- Providing performance management information for analysis by the partnership.

The LSCB is continually proactive in raising awareness of child safeguarding across partner organisations and the public, and engaging all partner agencies in the active development of safeguarding strategies.

## 3 Main Achievements

### 3.1 Joint Area Review

In October 2007 a Joint Area Review of services for children and young people was carried out in Bracknell Forest. The report from the Review was published in February 2008. The framework for rating the quality of services is that they are assessed on a four tier

---

<sup>1</sup> See <http://www.bracknell-forest.gov.uk/local-safeguarding-children-board-partnership-agreement.pdf>

framework. Services are assessed as either 'outstanding' (4), 'good' (3), adequate (2) or 'inadequate' (1). All service areas in Bracknell Forest were assessed as 'good'. This includes safeguarding activity, which is inspected and assessed as a discreet service area.

The report<sup>2</sup> notes that 'the LSCB is effective, has made a good impact and has facilitated improved accountability and ownership of safeguarding issues across agencies'. In particular the report states that 'safeguarding in recruitment is a priority issue for the LSCB and there is work in progress to ensure a safe approach across all sectors, with examples of practice improvements made as a result'.

The JAR report notes that there are some inconsistencies in the oversight of safeguarding practice and in the application of thresholds by different agencies. These issues are fully addressed in the Council's Joint Area Review Action Plan<sup>3</sup> and the LSCB Business Plan.

### **3.2 Business Manager**

The LSCB has now successfully recruited a Business Manager, Andrea King, who joined the Board in September 2007. Andrea provides excellent professional support, co-ordination and awareness raising for the work of the LSCB in safeguarding children and young people.

### **3.3 LSCB Conference**

In June 2008 the LSCB brought together all local child care agencies for the annual local multi-disciplinary conference, which focussed on 'How Adult and Children's Services work together to safeguard children'.

Representatives attended from Health, Education, Police, Probation, Adult Services, Children's Social Care and Voluntary, Community and Faith Agencies in the Bracknell Forest area. All Bracknell Forest professionals and volunteers who have contact with children and young people or who work with adults caring for children, where there may be concerns about the child's welfare, were invited to attend.

Keynote Speakers included an introduction to a new approach to assessing and supporting families by Guy Shennon, and a national policy overview from the Deputy Director of the Safeguarding Group at the Department of Children, Schools and Families (DCSF), Andy Hurdle and the regional Children's Services Adviser, Richard Balfe. There was also an interesting range of Adult and Children's Services workshops. The Conference also provided designated inter-agency refresher training for Child Protection at Levels 1 and 2.

Local conferences have helped immensely in raising awareness of the role of the LSCB and work and will continue to be an important annual event.

### **3.4 Raising Awareness Sub Group**

A new Raising Awareness sub group of the LSCB has been established. The group is tasked with promoting the safeguarding agenda more widely and increasing the range of professionals and volunteers that the LSCB will engage with. The group will develop and promote accessible advice on safeguarding procedures and values, and will develop accessible web resources, aimed at parents and carers, children and young people, child care practitioners and volunteers.

---

<sup>2</sup>A copy of the report can be downloaded from:

[http://www.ofsted.gov.uk/reports/pdf/?inspectionNumber=3575&providerCategoryID=0&fileName=\\JAR\\jar\\_2008\\_fr.pdf](http://www.ofsted.gov.uk/reports/pdf/?inspectionNumber=3575&providerCategoryID=0&fileName=\\JAR\\jar_2008_fr.pdf)

<sup>3</sup>See <http://www.bracknell-forest.gov.uk/jar-action-plan-2008.pdf> for a copy of the action plan.

The group has successfully developed and published a Safeguarding Cue Card<sup>4</sup> which explains clearly what action to take if:

- A child or young person may be at risk of harm or neglect,
- An allegation is made about a professional or a volunteer,
- There is a need to share personal information in an emergency in order to safeguard a child or young person,
- A child or young person has multiple problems and is need of support from a number of agencies.

The Safeguarding CueCard has been identified as an example of regional good practice by Government Office South East (GOSE).

### 3.5 Webpage

The LSCB webpage has expanded during 2007/08 and now provides important additional information and advice for children and young people, their families and those who work with them. This includes:

- Information for Parents and Carers about Child protection services,
- Information on Bullying and where to get help,
- Information on Training and Development,
- A Safe Parenting guide, which provides advice on a wide range of child care and protection issues,
- Information about the Child Exploitation and Online Protection Agency.
- Access to a new Safeguarding Toolkit (see below).

### 3.6 The Safeguarding Toolkit

A Safeguarding Toolkit has been published on a separate webpage linked to the main LSCB page. This includes the Safeguarding Cue Card, Safer Workforce Practice Checklist, Safer Working Practice Guidance, Information for Parents and Carers and information on responding to domestic violence. See <http://www.bracknell-forest.gov.uk/living/liv-children-and-families/liv-local-safeguarding-children-board/liv-lscb-safeguarding-toolkit.htm> for details. The toolkit is intended to help Partner Agencies meet their responsibilities under Section 11 of the Children Act 2004 and will be developed further during 2008/09.

### 3.7 Multi-Agency Training

The LSCB multi-agency training strategy approved by the Board in December 2006 has now been implemented. As endorsed by the Board in April 2007 Child Protection Training is now planned by an integrated East Berkshire Training Sub Group, which reports to the three LSCBs in that area. Details of training courses are posted on the LSCB webpage in the 2008-09 Training Calendar<sup>5</sup>.

The aims of multi-agency training are:

- To ensure good quality consistent training to an agreed standard that fulfils national requirements for child protection training,

<sup>4</sup> <http://www.bracknell-forest.gov.uk/safeguarding-cuecard.pdf>

<sup>5</sup> <http://www.bracknell-forest.gov.uk/east-berkshire-lscb-training-calendar-2008-to-2009.pdf>

- To ensure all training complies with the principles of the Children Act 1989 and Children Act 2004 and the Humans Rights Act 1998 and all other legislation relevant to child protection,
- To ensure all training is congruent with the principles underpinning “Every Child Matters”, “Working Together to Safeguard Children” and the “Framework for the Assessment of Children in Need and their Families”, and any associated guidance.
- To ensure that all multi-agency training will promote inter-agency collaboration and partnerships to support and protect children and vulnerable young people who may be at risk of harm.
- To ensure equal opportunities are incorporated into all training and to ensure it is accessible and relevant to all people regardless race/ethnicity/culture/faith, gender, sexuality, age, disability, and health.
- To ensure equality and respect for diversity will be promoted in all training methods and training materials.

### **3.8 Safer Workforce Practice**

In June 2007 a workshop for all LSCB member agencies was held to assist member agencies with the development of safer workforce action plans in accordance with agreed business plan targets.

In October 2007 a further multi-disciplinary training event covering safe recruitment methods and standards was hosted by the Bracknell Forest LSCB for all the East Berkshire LSCB partner agencies.

A safer workforce analysis has now been completed across LSCB member agencies in which reporting arrangements for the referral and investigation of allegations against staff were reviewed. Between April 2007 and March 2008 the Local Authority Designated Officer (LADO), who is responsible for co-ordinating advice and information with regard to allegations against staff, received an unexpectedly low number of referrals from local agencies. However, that is consistent with experience in the rest of the region.

A Safer Workforce Practice Checklist covering all key safe recruitment practice points has been published on the LSCB webpage<sup>6</sup> and issued to all LSCB agencies. A comprehensive Safer Workforce Training programme is now being delivered to managers/supervisors within the children’s workforce in Bracknell Forest on a multi-disciplinary basis.

### **3.9 Anti-Bullying**

The Anti-Bullying group, which is a sub group of the LSCB, has published a complete new strategy and action plan to address and explain the issues raised by bullying. The strategy is called ‘Safer Together, Safer Wherever’, and is published on the LSCB website<sup>7</sup>. The document sets out actions to tackle the problem of bullying and describes the arrangements for prevention and response that are already in place locally and signposts children and young people to appropriate organisations offering support and help.

---

<sup>6</sup> See <http://www.bracknell-forest.gov.uk/living/liv-children-and-families/liv-local-safeguarding-children-board.htm>

<sup>7</sup> <http://www.bracknell-forest.gov.uk/anti-bullying-strategy-and-action-plan.pdf>

### **3.10 Safeguarding Children and Young People from Sexual Exploitation**

A revised protocol to guide multi-agency action in safeguarding children and young people from sexual exploitation has been endorsed by the LSCB and is published on the LSCB website<sup>8</sup>.

### **3.11 Child Death Review Group**

The statutory requirement for arrangements to be in place by April 2008 to ensure that there is an overview of all child deaths has been met through the work of the Berkshire-wide Child Death Overview Project. Arrangements for a multi-agency rapid response to unexpected child deaths have also been developed on an East Berkshire basis. The LSCB has supported the development of these arrangements and will monitor their effectiveness locally.

### **3.12 Protection Planning**

The LSCB has endorsed local proposals set out in accordance with national statutory guidance in Working Together to Safeguard Children 2006 to cease maintaining a separate child protection register. The functionality of the register has been replaced by the Integrated Children's System (ICS) and, more specifically, by the requirement that children who meet the previous registration criteria and are assessed to be at risk of significant harm are the subject of a child protection plan. Plans are established under the categories of neglect, sexual abuse, physical abuse and emotional abuse.

### **3.13 Private Fostering**

In September 2007 the LSCB received its second annual report from the Children's Social Care Service setting out the numbers of privately fostered children notified to the local authority and what measures are being put in place to promote awareness of the new legislative requirements for the local authority to be notified of circumstances where children under 16 years (under 18 years for children with disabilities) are being privately fostered.

Just three children were notified to the local authority in 2006/07, and all these arrangements were for less than 28 days so did not qualify as private fostering under the 2005 regulations. In order to further publicise the need for private foster carers to identify themselves and register with Bracknell Forest Council, the Family Placement Team has published a new public information leaflet and the LSCB has sponsored an advertisement in the Bracknell Forest 'Community Safety and Crime Reduction Booklet' for 2007/08. The statement of purpose for private fostering services provided by Children's Social Care is available on the Children and Families webpage<sup>9</sup>.

### **3.14 Licensing and Gambling**

In February 2008 the LSCB received the annual report from Thames Valley Police on their actions on behalf of the LSCB to maintain the suitability of premises with regard to the safeguarding of children and young people. The LSCB endorsed the various actions taken.

---

<sup>8</sup> <http://www.bracknell-forest.gov.uk/multi-agency-protocol-on-safeguarding-young-people-at-risk-of-sexual-exploitation.pdf>

<sup>9</sup> <http://www.bracknell-forest.gov.uk/private-fostering-statement-of-purpose.pdf>

### **3.15 Links to other 'Themed Partnerships'**

There is an ongoing dialogue between the LSCB, , Crime Disorder Reduction Partnership (CDRP) and Bracknell Forest Children's Trust. The LSCB makes a key contribution to the delivery of the 'Stay Safe' objectives of the Children and Young People's Plan.

## **4 Child Protection Performance Report**

### **4.1 Reporting methods**

Child Protection performance and monitoring reports are presented at every LSCB meeting for consideration and debate by members. These reports include monitoring information in the following categories:

- National Performance Assessment Framework (PAF) indicators for children with Protection Plans
- Numbers of children with Child Protection Plans
- New Child Protection Plans
- Cessation of Child Protection Plans
- Protection Plans by Category of Abuse
- Duration of Protection Plans
- Sibling Groups with Protection Plans
- Ethnicity of Children with Child Protection Plans
- Age and Gender information
- Child Protection Case Conference Activity
- Referrals and Assessments undertaken during the year

### **4.2 National Performance Assessment Framework (PAF) indicators**

Performance in relation to all three main national PAF indicators was assessed as 'good' or 'very good' in 2007/08. Performance against these indicators is assessed on a five point scale as follows:

Band 5 - Very Good

Band 4 - Good

Band 3 - Acceptable

Band 2 - Ask Questions

Band 1 - Investigate Urgently

Performance in Bracknell Forest was assessed as follows:

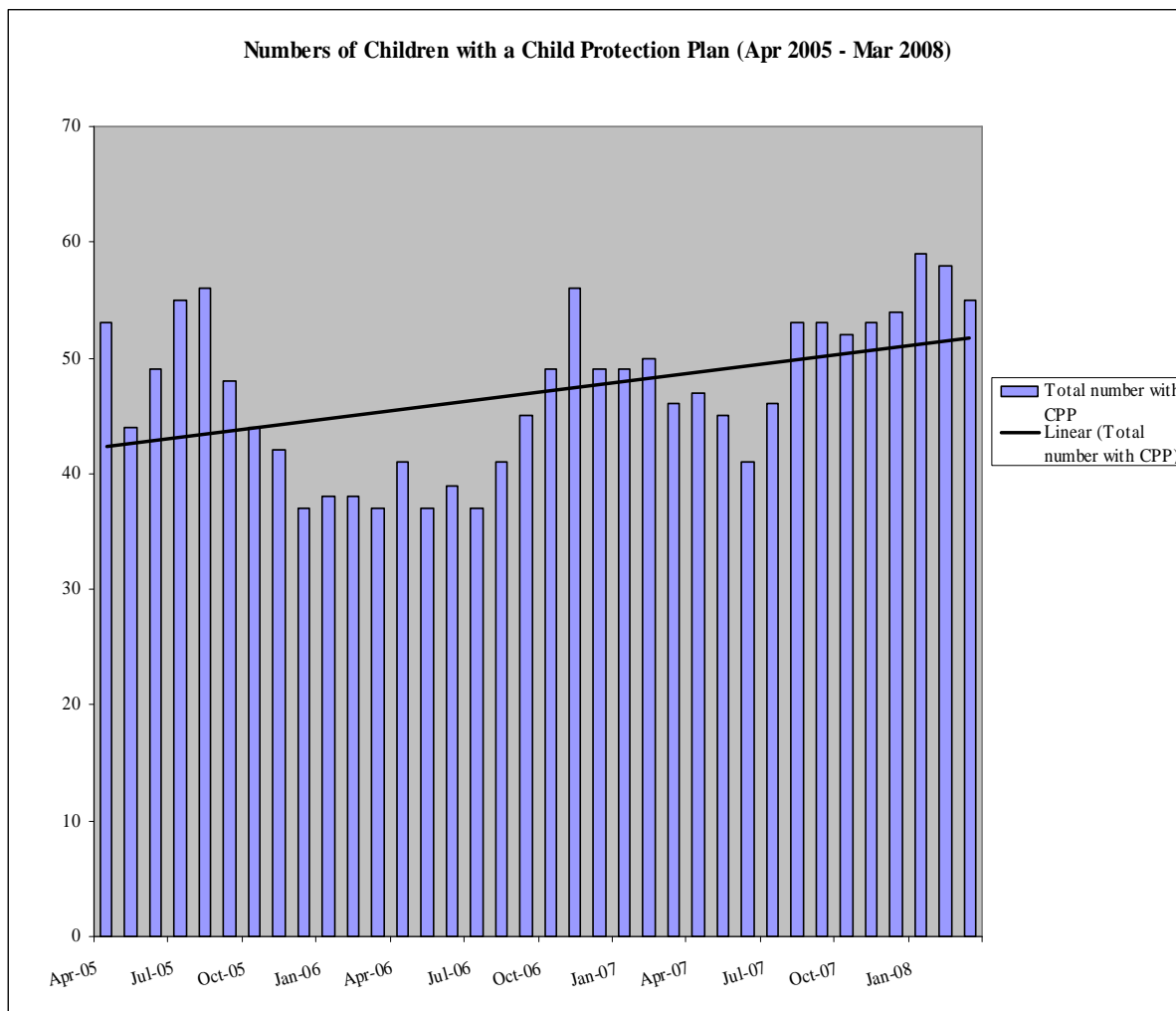
- PAF Indicator A3: The percentage of those children who are assessed as requiring a Child Protection Plan who have previously been subject to one, expressed as a percentage of the total number of children subject to Child Protection Plans. The figure for Bracknell Forest in 2007/08 was 8.2%, equivalent to 'good' performance, band 4.
- PAF Indicator C20: the percentage of child protection cases reviewed within the statutory timescales. In Bracknell Forest in 2007/08 all cases were reviewed on time, equivalent to 'very good' performance, band 5.
- PAF Indicator C21: the percentage of children who were assessed as no longer needing a Child Protection Plan, who have continuously been the subject of a Child Protection Plan for two years or more, expressed as a percentage of the total number of children

ceasing to be the subject of a Child Protection Plan. In Bracknell Forest in 2007/08 the outcome for this target was 1.9%, equivalent to 'good' performance, band 4 (band 5 is not available for this indicator).

### 4.3 Numbers of Children subject to Child Protection Plans

It is significant that in April 2005, 53 children had Child Protection Plans, and the figure for Child Protection Plans three years later in March 2008 was comparable at 55. In the intervening period the numbers had increased to 59 in January 2008 and dipped to a low of 37 over several different months in early 2006.

In 2007/08 Bracknell had an average of 16.2 children per 10,000 subject to Child Protection Plans. The figure for our statistical neighbours was 16.5. At 31 March 2008 there were 53 children subject to a Child Protection Plan in Bracknell Forest. This equates to 19.5 children per 10,000 population under 18, which represents a year on year increase of around 20%. The long-term trend indicates that overall numbers are steadily increasing in Bracknell Forest, although current levels are not as high as seen in previous years (74 during December 2004).

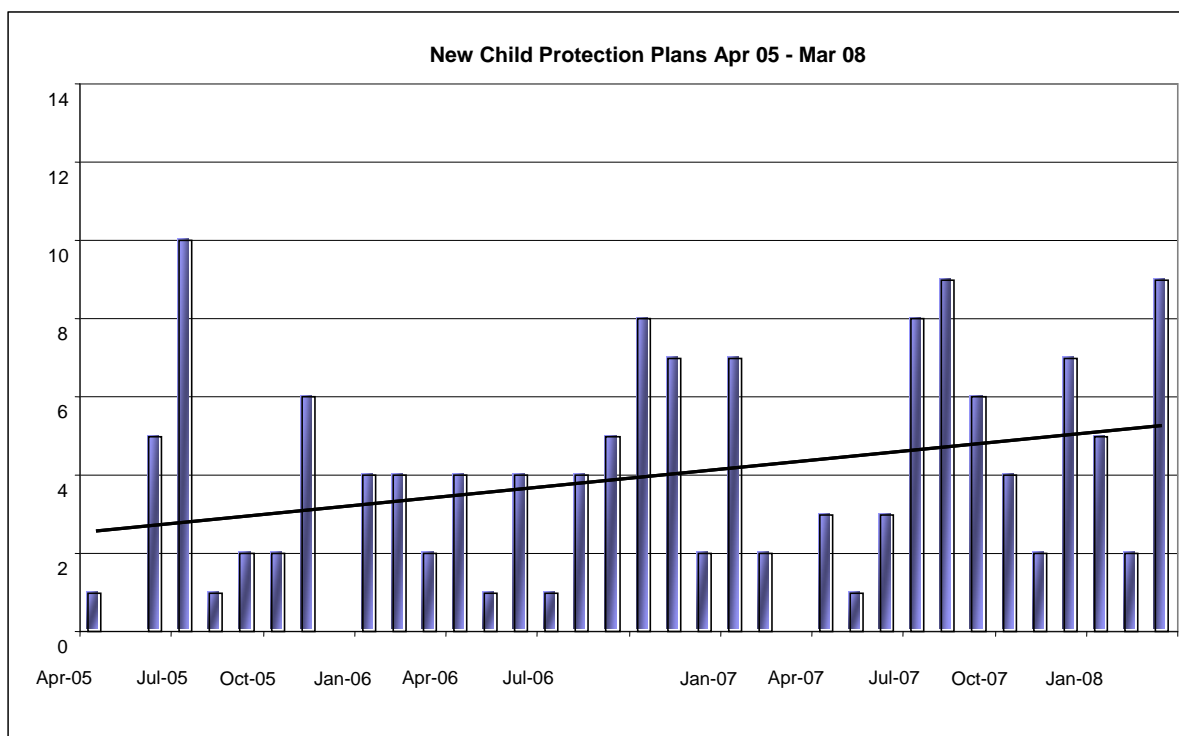


#### 4.4 New Protection Plans/Cessation of Child Protection Plans

An analysis of new Child Protection Plans over the same 3 year period shows a gradual increase in the numbers of Child Protection Plans, although the overall number of children subject to a Protection Plan at the beginning and end of the 3 year period are very similar. The figures range from no new Protection Plans made in December 2005 to highs of 10 in July 2005 and 9 in August 2007 and March 2008. To put these figures in context it is important to note that the overall numbers are small which in itself accentuates any variation. Also, the situation can change markedly as a result of activity within just one family if all the children in a large sibling group subject to a Protection Plan.

At 31 March 2007, the rate of new Child Protection Plans per 10,000 population aged under 18 was 16.6 for Bracknell Forest, whilst the figure for statistical neighbours was 20.3. The trend for the cessation of Child Protection Plans has remained constant over the 3 year period. The rate of cessation of Child Protection Plans in 2007 per 10,000 population under 18 was 13.6 for Bracknell-Forest; whilst for our statistical neighbours it was 19.2.

When compared with the rate of registrations per 10,000 it can be seen why the overall trend in numbers of children subject to a protection plan is upward as there are more children being made subject to Protection Plans than children where a Protection Plan is no longer considered necessary. As noted above in relation to PAF Indicator A3, the number of children who are re-assessed as requiring a Child Protection Plan was low in 2007/08, and that is consistent with the previous 2 years.

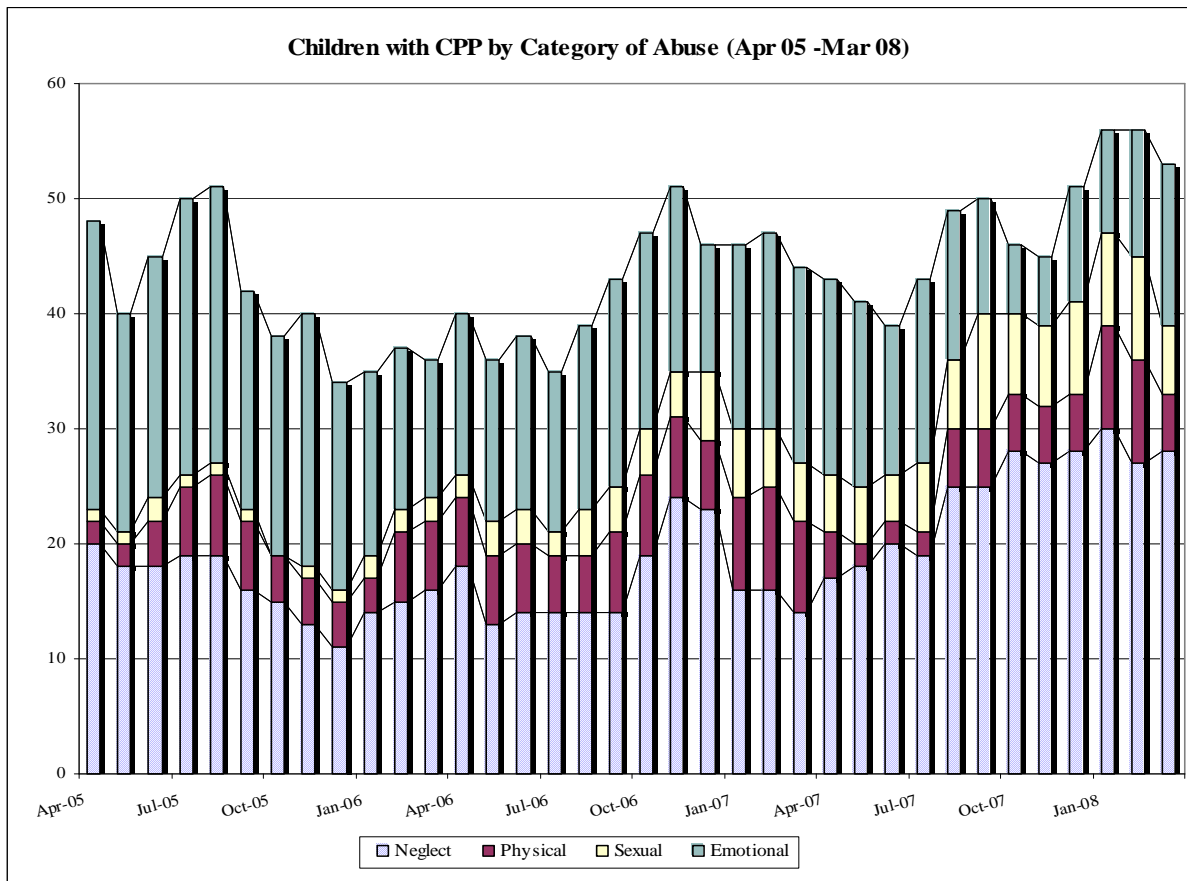


#### 4.5 Children subject to Protection Plans by Category of Abuse

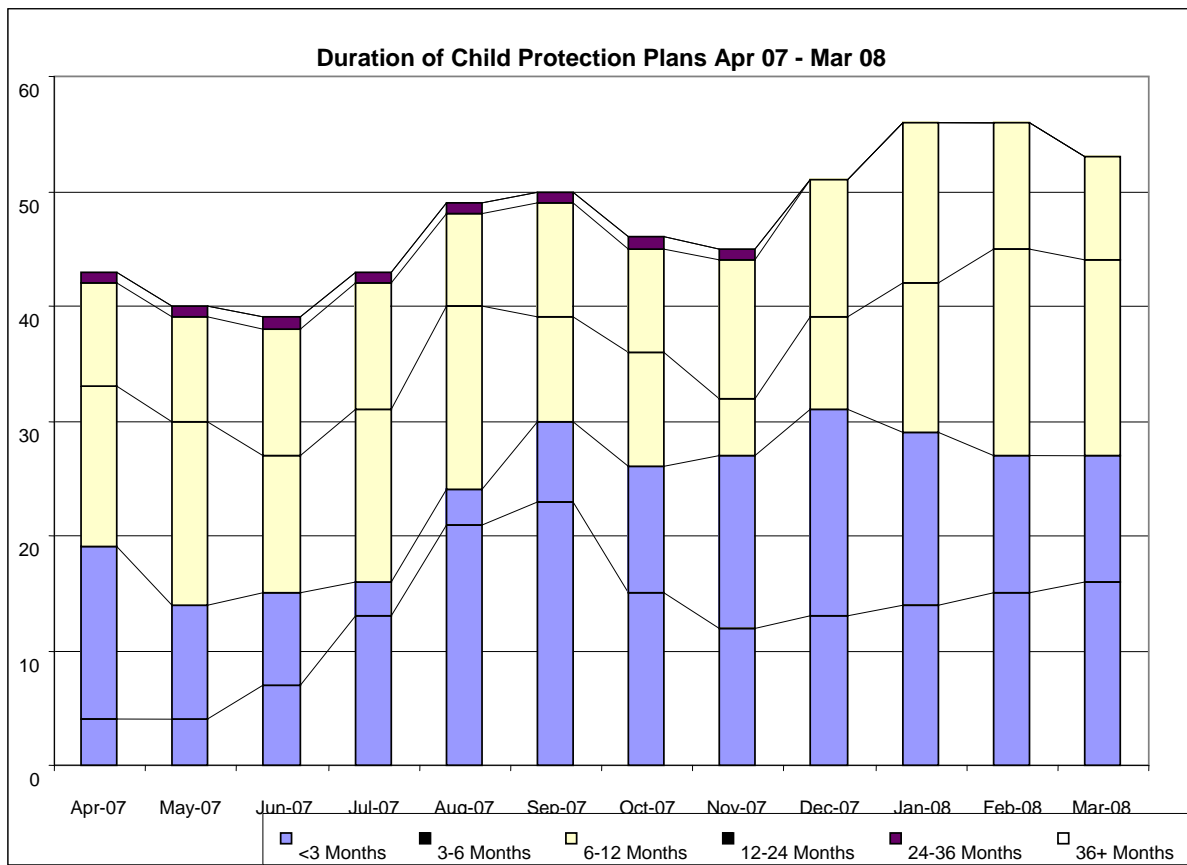
The trend over the last 3 years is that either Neglect or Emotional Abuse has been the category under which the majority of children are subject to a Child Protection Plan. Nationally at the end of March 2007, Neglect was the most common category used for those children subject to a Child Protection Plan, whilst in Bracknell Forest Emotional Abuse was the most common category. However, at the end of March 2008 Neglect was the most common category in Bracknell Forest, in line with existing national trends.

## Bracknell Forest LSCB Annual Report 2007-08

Physical and Sexual Abuse have always been the least used categories. Nationally, at the end of March 2007 Physical Abuse was the third most common category with Sexual Abuse the least used. In Bracknell Forest in March 2007, 8 children had a Child Protection Plan under the Physical Abuse category with 5 under the Sexual Abuse category.



#### 4.6 Duration of Child Protection Plans



At 31st Mar 2008, 51% of children have had Child Protection Plans for between 0 and 6 months with 30% being for less than 3 months. 49% have had Child Protection Plans for between 6 and 24 months with the majority (32%) being between 6 and 12 months. Currently there are no children with Child Protection Plans for more than 24 months. Nationally, 6% of children who ceased to be the subject of a Child Protection Plan had been on it for over 2 years Our Statistical Neighbours had a figure of 6.1, Bracknell Forest had a figure of 5.4%.

#### **4.7 Sibling Groups**

It remains the case in March 2008 that a high number of children with Child Protection Plans in Bracknell Forest are either in single children families or are the only child in their family with a Child Protection Plan (36%). However, there has been an increase in the number of children with protection plans from families where two children have Child Protection Plans (36%).

#### **4.8 Ethnicity of Children with Child Protection Plans**

The majority of children who are subject to a Child Protection Plan within Bracknell Forest are White (92.5%) and are classified as White British. At the end of Mar 2008, there are 3 children from minority ethnic backgrounds with a Child Protection Plan.

At 31st March 2007 the ratio of the proportion of children with Child Protection Plans that were from minority ethnic groups to the proportion of all children in local population from minority ethnic groups was 1.4. This is in line with national data and slightly below our statistical neighbours (2.0).

#### **4.9 Age and Gender information**

At end of Mar 2008 there were more girls (55%) than boys (43%) with a Child Protection Plan. The greatest differences are in the 10-15 age group, which accounts for 23% of children with a protection plan. In that age group 75% are female whilst 25% are males.

#### **4.10 Child Protection Case Conference Activity**

As noted above in relation to PAF indicator C20, all child protection cases were reviewed on time. Between Apr 2007 and March 2008 children have attended 26% of those Child Protection Case Conferences where they have been eligible to attend. Parental attendance at Child Protection Case Conferences remains good with 79% attendance (75 out of a total of 95 Child Protection Case Conferences).

#### **4.11 Referral Numbers and Assessments undertaken**

In Bracknell Forest the overall number of referrals to Children's Social Care are showing a year on year increase. The cumulative number of referrals per 10,000 (Under-18) population has increased from 286.3 during the same period in 06/07 to 396.4 in 07/08. The cumulative number of local referrals which led to initial assessments is currently 54.4% (580 out of 1066) compared to 72% (554 out of 770) at 31st March 2007. Nationally, there were 545,000 referrals in the year ending 31 March 2007 compared to the previous year's figure of 569,300. 23% were repeat referrals within 12 months whilst our Statistical Neighbours was 24.3%. Bracknell Forest achieved 18.1% at March 2007.

## **5 Multi-Agency Performance Management**

The LSCB has led work across Berkshire in collaboration with the LSCBs in all six of the unitary authorities to develop a common dataset for all the key safeguarding agencies, which

will be used from 2008/09 to assess safeguarding performance across those different services.

A benchmarking tool for agencies to carry out a self assessment against the requirements of Section 11 of the Children 2004 has also been developed by the Berkshire unitary authorities. This requires agencies to ensure that they have the structures and policies in place to ensure that safeguarding values are fully integrated into agency culture and practice. Section 11 benchmarking will be introduced during 2008/09.

## **6 LSCB Sub Groups**

The full range of Sub Groups of the LSCB currently established and their key tasks are as follows:

### **6.1 The LSCB Executive Committee**

- Planning agenda for Board meetings
- Preparation of Annual LSCB Business Plan
- Management of pooled LSCB funds and provision of financial reports to LSCB
- Co-ordination of Serious Cases Review Group

### **6.2 Serious Case Review Group**

- Will be convened by LSCB Chair and Executive, and will undertake serious case reviews in accordance with the guidance in Working Together. It was not necessary to convene the Serious Case Review Group during 2007/08.

### **6.3 Quality Standards and Case Review Group**

- Case monitoring and case study
- Development of multi-agency performance reporting
- Reports to the main board on a six monthly basis
- Overseeing and co-ordinating a Section 11 Audit

In 2007-08 the group has continued its work to support proposals for monitoring multi-agency performance.

### **6.4 Policy and Procedure**

- This is a Berkshire wide group which reviews the scope and quality of those policies and procedures for which the LSCB has a responsibility.
- Reports to the main board on a six monthly basis

The role of the group has changed following the completion of its work in developing the new Berkshire Child Protection Procedures in September 2006 and work is now centred on review of existing policy and procedures.

### **6.5 Training**

This is a Berkshire East sub-group (Slough, Royal Borough of Windsor and Maidenhead and Bracknell Forest).

- To implement the training strategy
- To identify gaps of knowledge in each agency and devise plans to fill those gaps by recommending training, single-agency or multi-agency, to keep abreast of current developments in Child Protection.
- Reports to the main board on a six monthly basis

## **6.6 Child Prostitution Monitoring and Review Group**

- To gather and analyse information about children and young people at risk of prostitution, identify any gaps in local service provision, work in partnership with the Training Sub-Group to ensure adequate training is available, and review procedures, practice and provision for children and young people at risk of sexual exploitation.
- Reports to the main board on an annual basis

## **6.7 Anti-Bullying Group**

- The group was established to work towards understanding and reducing bullying amongst all children and young people in the community of Bracknell Forest.
- Bullying is defined as: 'Deliberate hurtful behaviour repeated over a period of time and in circumstances where it is difficult for those being bullied to defend themselves'.
- Reports six monthly to the main board.

## **6.8 Raising Awareness**

A new Raising Awareness sub group of the LSCB has also now been established. The group is tasked with promoting the safeguarding agenda more widely and increasing the Partnership's dialogue with children, young people and parents/carers, as well as the range of professionals and volunteers the LSCB wishes to engage with.

## **6.9 Child Death Overview Panel**

The Child Death Overview Panel was established April 2008 on a pan-Berkshire basis to ensure that there is an overview of all unexpected child deaths, as required by Working Together, April 2006.

# **7 Future Priorities**

## **7.1 LSCB Business Plan**

The 2008-10 LSCB Business Plan provides LSCB members and other interested parties with an overview of the aims and future work of the LSCB. The Plan is a working document which has been fully updated in consultation with all member agencies. The Plan is published on the LSCB webpage. The Business Planning Priorities are set out below:

## **7.2 Business Planning Priorities 2008 -10**

The priorities for 2008-10 were developed in full consultation with LSCB members and wider Partners over a series of meetings during the autumn of 2007 and spring 2008.

- Leading scrutiny and challenge of Safeguarding practice in Bracknell Forest,
- Working more closely with the Children's Trust and CDRP, with particular focus on common priorities
- Reducing bullying,
- Introducing new processes for responding to child deaths,
- Raising Safeguarding Awareness, including developing a Communications Strategy and developing a 'Safeguarding Toolkit' to help all Partner agencies meet their Safeguarding responsibilities,
- Ensuring that all settings and agencies have a Safeguarding Policy for all their core business,

- Completing a Section 11 audit with all Partner Agencies working with children, to establish to what extent we are meeting our Safeguarding responsibilities,
- Contributing to the continuing update of the 2006 Child Protection Procedures and updating additional local Procedures,
- Developing a multi-agency process for collecting and analysing data, to assess the collective safeguarding performance of the LSCB Partner Agencies and the Board's progress in improving outcomes for children and young people ,
- Evidencing a clear prioritisation, of Child Protection and Safeguarding processes in all services in contact with children and young people (the 'Golden Thread of Safeguarding'),
- Supporting the establishment of seamless thresholds and consistent application of these by all services,
- Involving service users in the design and development of services,
- Reviewing and maintaining progress in safer workforce practice,
- Updating Safeguarding training (including introducing Safer Workforce training) and reviewing the take up of training provision,
- Promoting E-Safety.

### **7.3 LSCB Business Plan Review**

Each of these priorities has been assigned to a particular LSCB or Children's Trust sub-group to lead; each group reports regularly to the LSCB Board.

Progress against Performance Indicators and improving outcomes for children and young people will be assessed by means of analysis of the LSCB Comprehensive Dataset and quarterly reports to the LSCB.

A review of progress against the LSCB Business Plan will be conducted annually.

## 7.4 Appendix: LSCB Income and Expenditure 2007/08

### Income 2007-08

#### LSCB partner contributions

Bracknell Forest Council	34,534.30
E. Berks Primary Care Trust	20,000.00
Connexions	3,000.00
Thames Valley Police	945.00
CAFCASS	388.00
National Probation Service	184.00

#### Other income

Sale of training places to RBWM	1,180.00
---------------------------------	----------

**Carry Forward from 2006/07)** 6,314.32

**Total** **66,545.62**

**Carry Forward to 2008/09** **12,623.02**

### Expenditure 2007-08

Business Management costs	30,619.08
Training	18,019.90
Printing	3,418.00
Room bookings and refreshments	1,040.62
Marketing	600.00
Reference Books	225.00

**Total** **53,922.60**